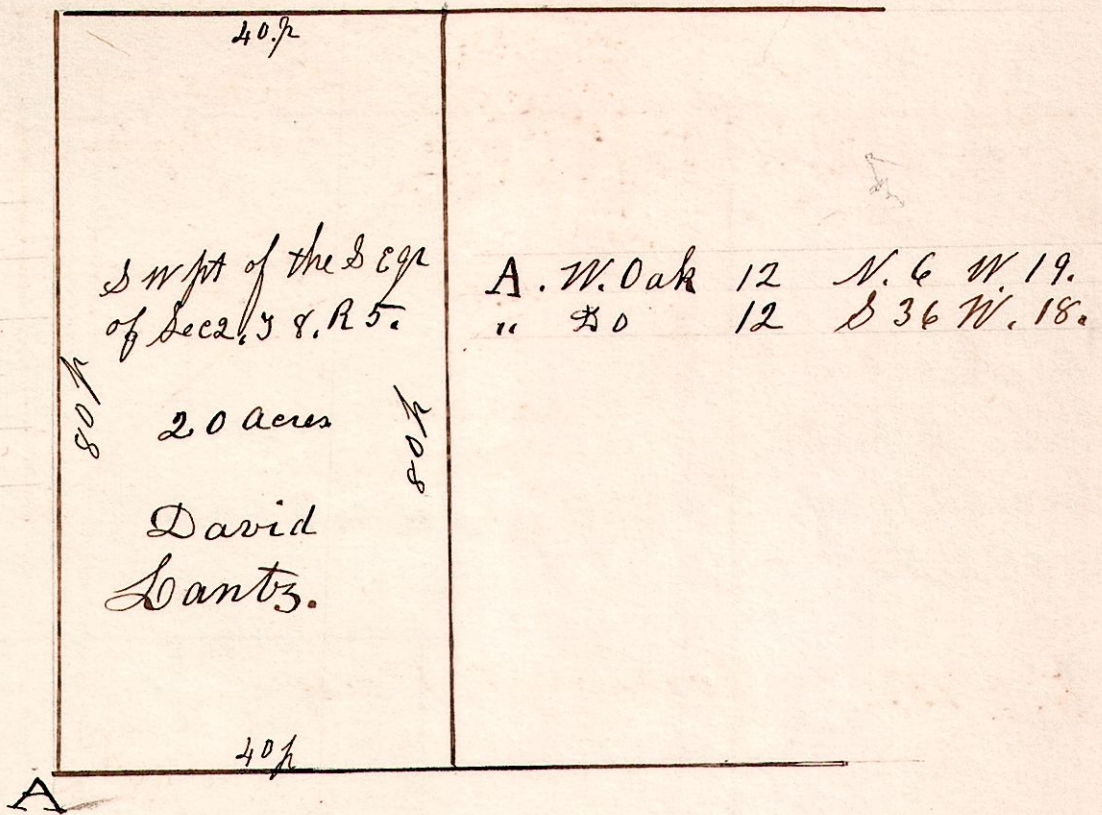


5. 8. 2. May 31<sup>st</sup> 1832.

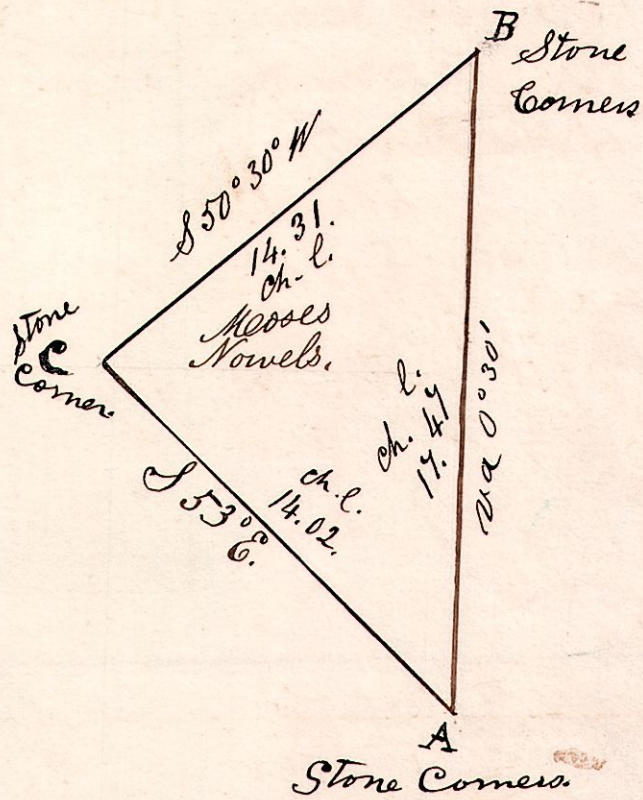
759  
 May 31<sup>st</sup> 1832. Surveyed the South west part of the South East quarter of Section 2 in Township 18. of Range 5 containing 20 acres for David Lantz.



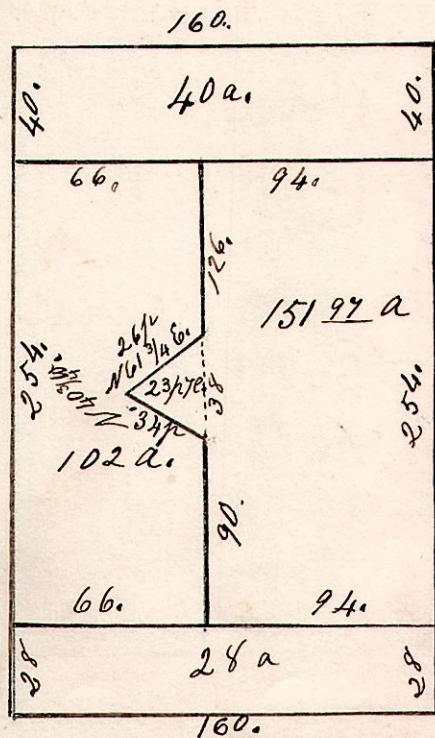
5. 9. 15.

March 23<sup>rd</sup> 1829. Surveyed an outlot being part of the Berlin quarter. Beginning 2 p + 14 links North of Porters NE corner on the East side of said q<sup>r</sup> Section.

A	N 0° 30' W	17.47
B	S 50° 30' W	14.31
C	S 53° E	14.02



5. 9. 20.



23<sup>rd</sup> the center of Orchard.  
 2<sup>nd</sup> Orchard piece.  
 Samuel Weaver 1/2 Section.  
 John Hochstetter W part.  
 Solomon Weaver E part.