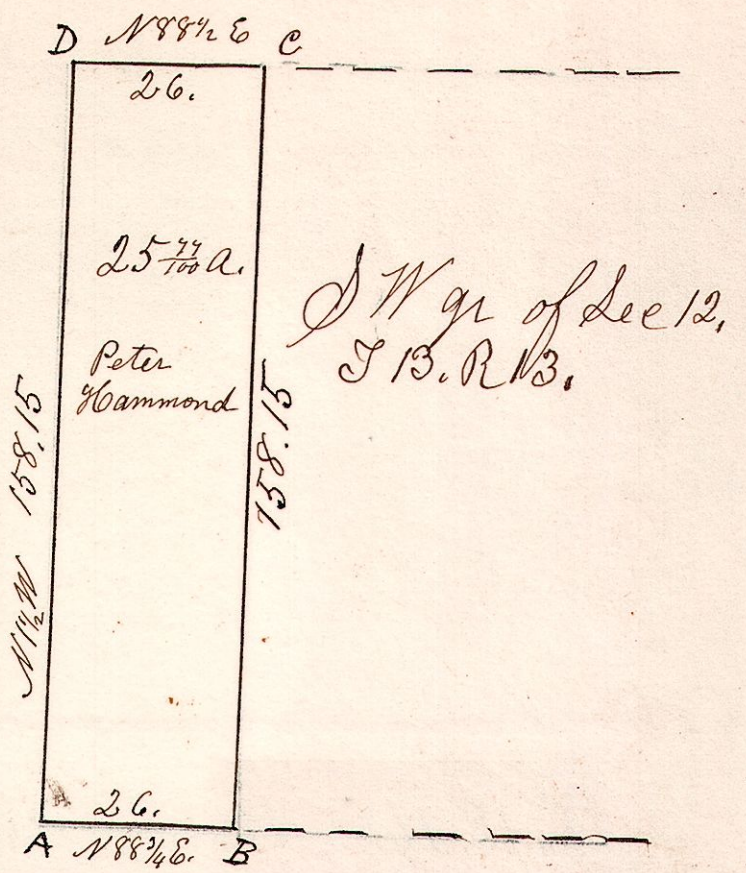
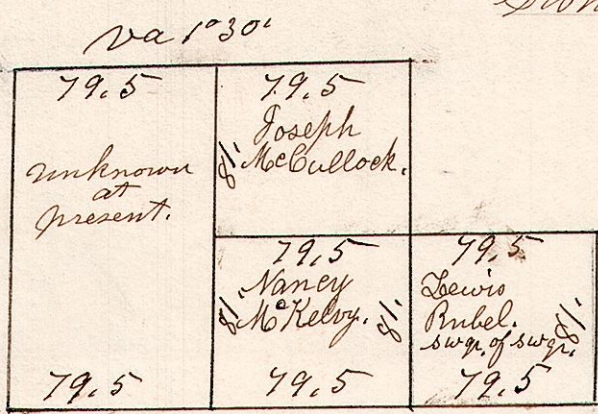


13. 13. 12. April 8th 1842,
 West part of South west quarter
 of Section 12. in Township 13. of Range 13.

- A, Section Corner.
- B, W. Oak 30. N 57 1/2 E 15.
- " Hickory 16. N 16 W 17.
- C, Stone corner.



14. 17. 17. March 5 1835.
 Surveyed the SW qr of
 Sec 17. in T 17 of R 14.
 and the SW qr. of the SW qr
 of the above section.



Stones planted at the corners.

6. 8. 2 1/2. June 8th 1854.
 Surveyed Lot 2. T 8. R 6. 2nd qr.

