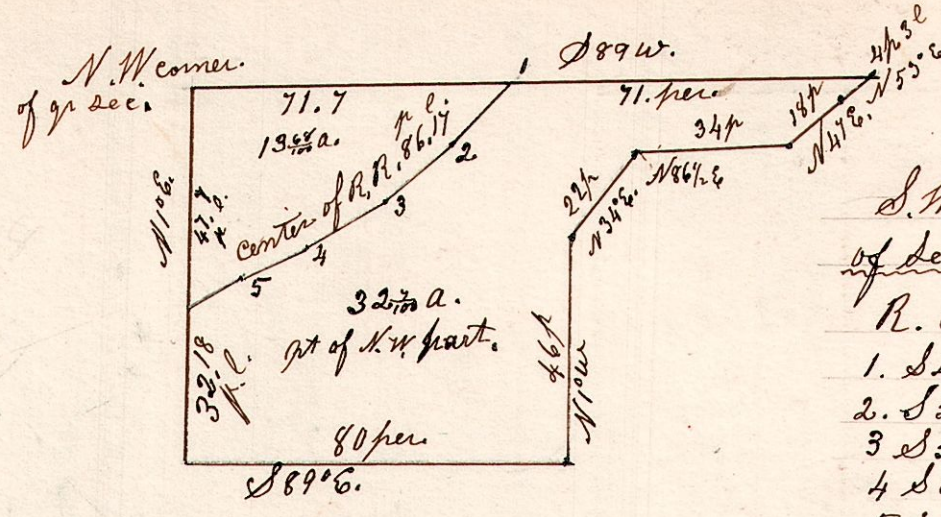


13.13.2. April 4th 1867.



S.W. part of N.E. q^r of section 2, in Tp 13. of R 13.

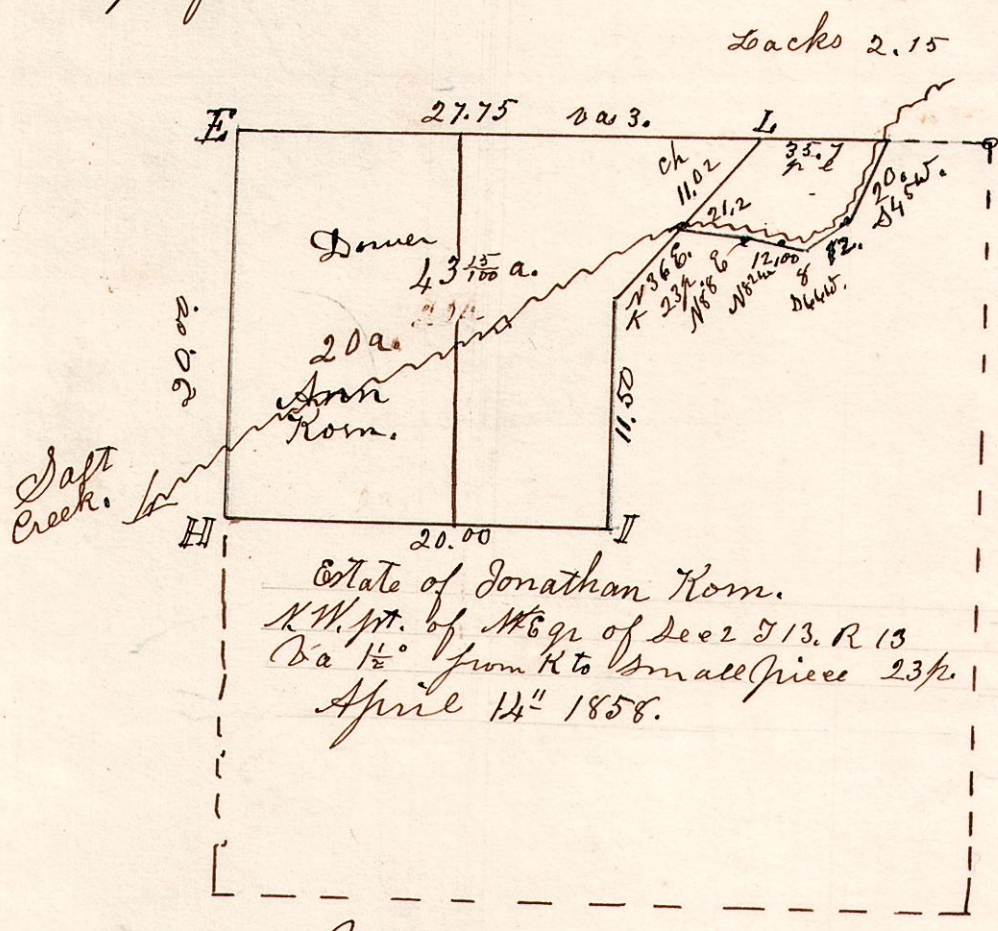
R. R. Notes

1. S 47 W - 20 per.
2. S 53 W - 20 per
3. S 59 W - 20 per
4. S 65 W - 16 per
5. S 66 W - 10 per. 17 l. to W line of q^r sec.

Rail Road notes very uncertain (attraction)

Surveyed April 4th 1867 for Wm Black.

13.13.2. N.E. q^r of Sec 2. T 13. R 13.



E	Beech	15	East	35
"	W. Oak	6	N 35 W	13
H	W. Walnut	6	S 52 1/2 E	21
"	B. Elm	6	N 34 W	30
I	W. Walnut	15	S 57 W	39
"	Cherry	24	S 12 W	71
K	W Oak	15	N 79 W	9
"	Do	24	N 56 E	23
L	Sugar	22	S 54 E	22
"	Beech	43	S 88 W	43

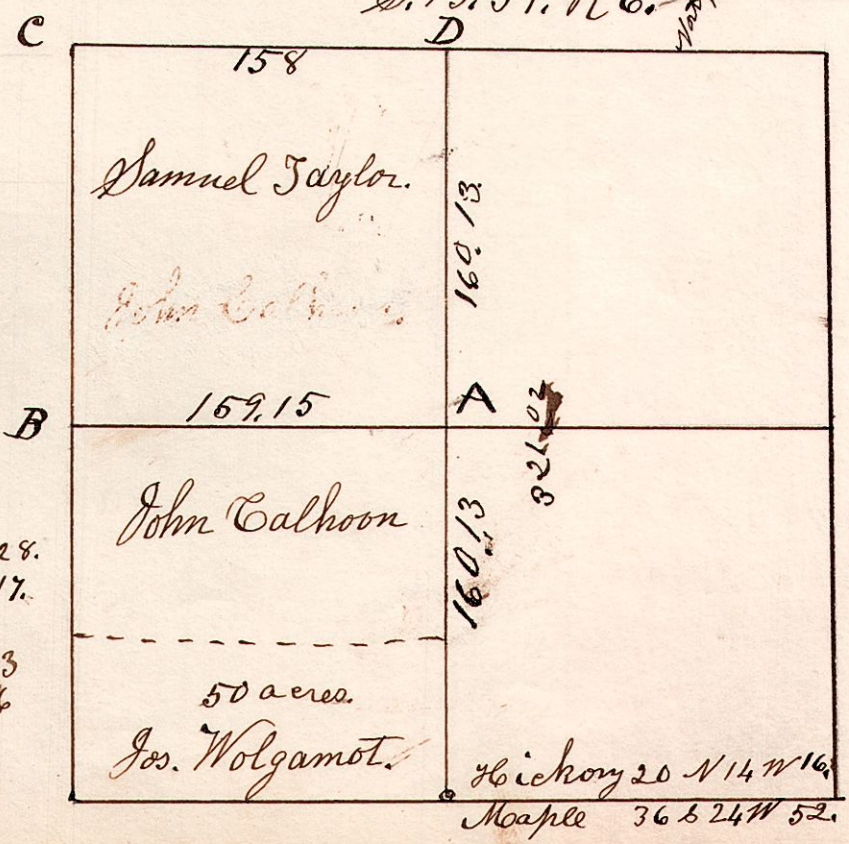
Rever. John Taylor.
James Calhoon.
Robert Calhoon.
Surveyor
Samuel Robinson
Cham Carver.
Peter Hammond.
Daniel French.
Mark - - Rom.

6.9.13. Dec 3rd 1836.

S. 13. T 9. R 6.

Dec 3rd 1836.
Surveyed W 1/2 Sec 13. T 9. R 6.

- C. Sassafras 7 N 59 E 7.
Maple 24 S 67 W 55.
D W. Oak 12 N 37 W 7.
" B. Oak 24 S 22 E 9.



- A. Hickory 18 N 65 W 28.
" Gum 8 N 18 E 17.
B. Roak 24. South 33
" Elm 10 N 52 E 6
Olm 12 S 57 E 22.
Chestnut 24 S 80 W 22.

Hickory 20 N 14 W 16.
Maple 36 S 24 W 52.