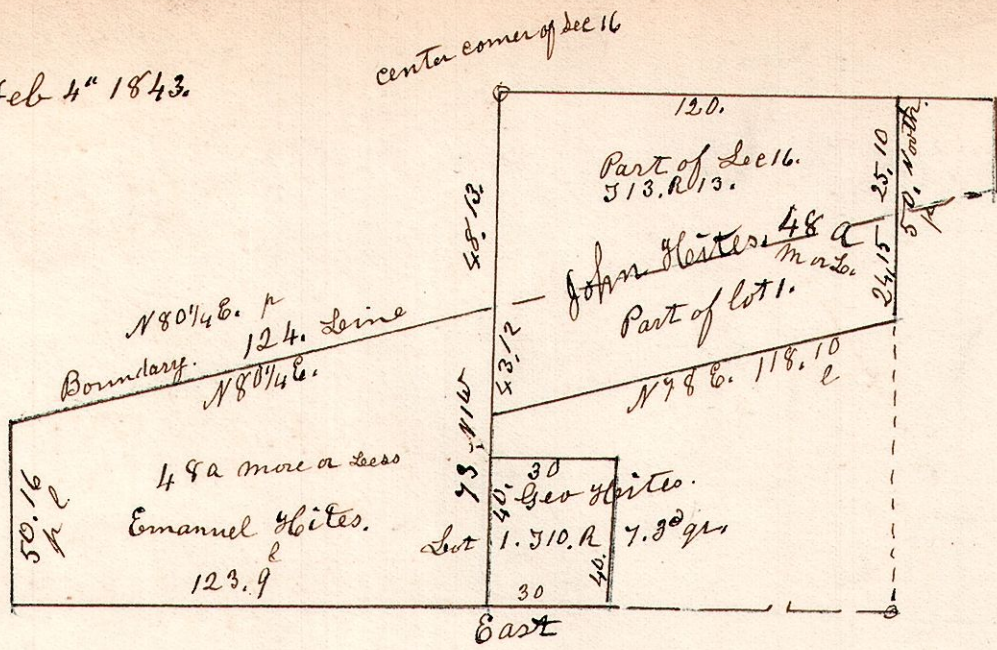
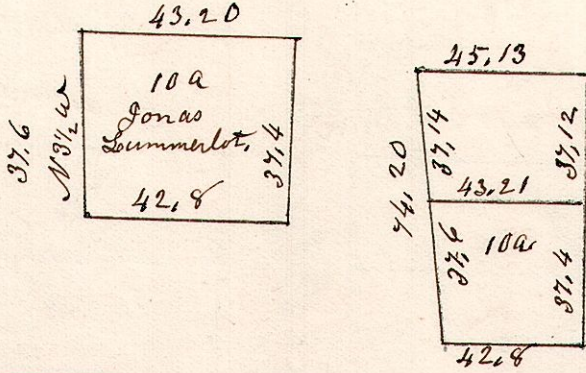


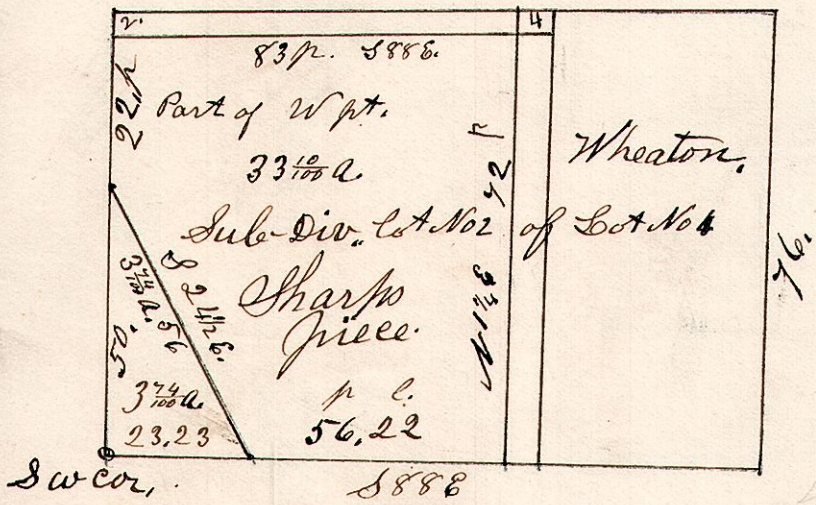
7.10-1. 30^{gr} Feb 4th 1843.



This Survey made Feb 4th 1843. For Geo Hites.



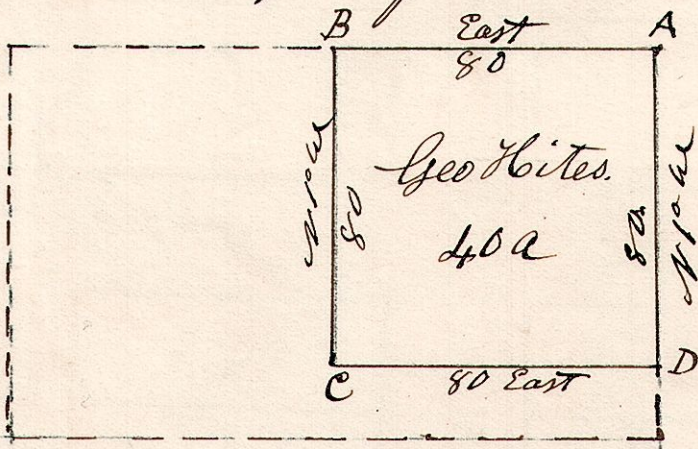
7.9. Sub. Div of No 4 September 4th 1871.



7.9.8. 1^{gr}.

Feb 22nd 1830. Surveyed the N 6 part of lot 8. 59. R. 7. 1^{gr} in following manner.

- A Poplar 18 N 26 E. 26
- " B, Oak 23 S 24 W 57
- B, Chestnut 48 N 36 W 17
- " B, Oak 48 48 E 31
- C W. Walnut 12 S 62 E. 32
- " Linn 18 S 58 W 21
- D W. Oak 30 S 24 W 12
- " Sassafras 3 N 2 W 10



The above is a private Survey of Geo Hites