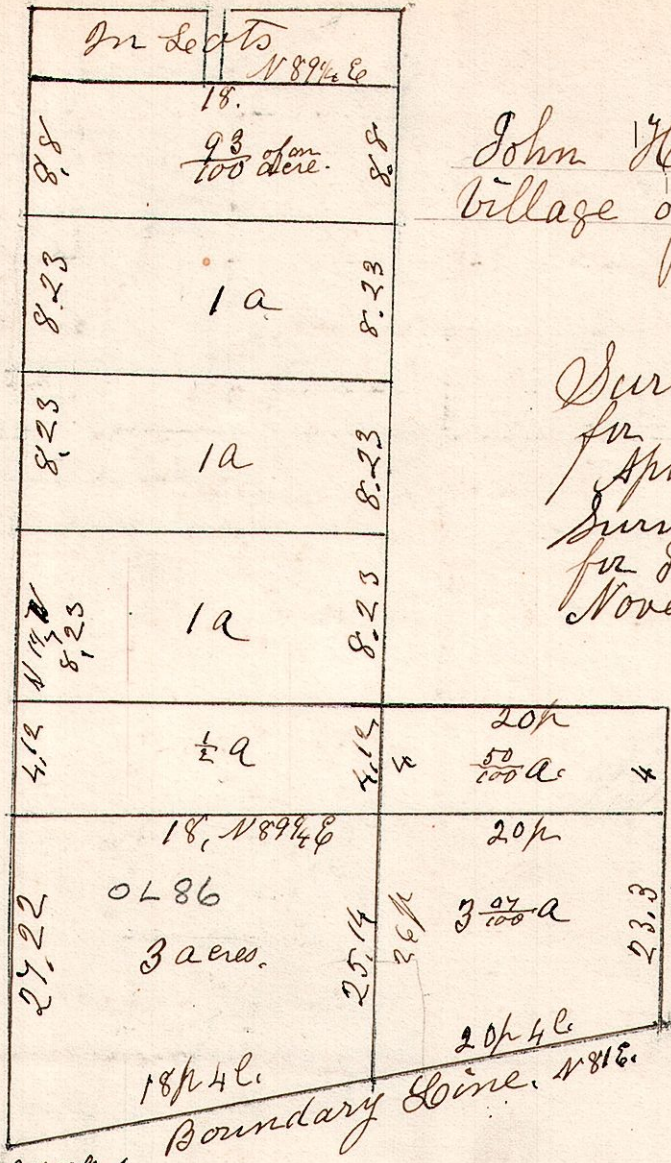


12.14.12.

John Hall's addition to Middletown



John Hall's Out lots to the village of Middletown (Now McHoope) 1805

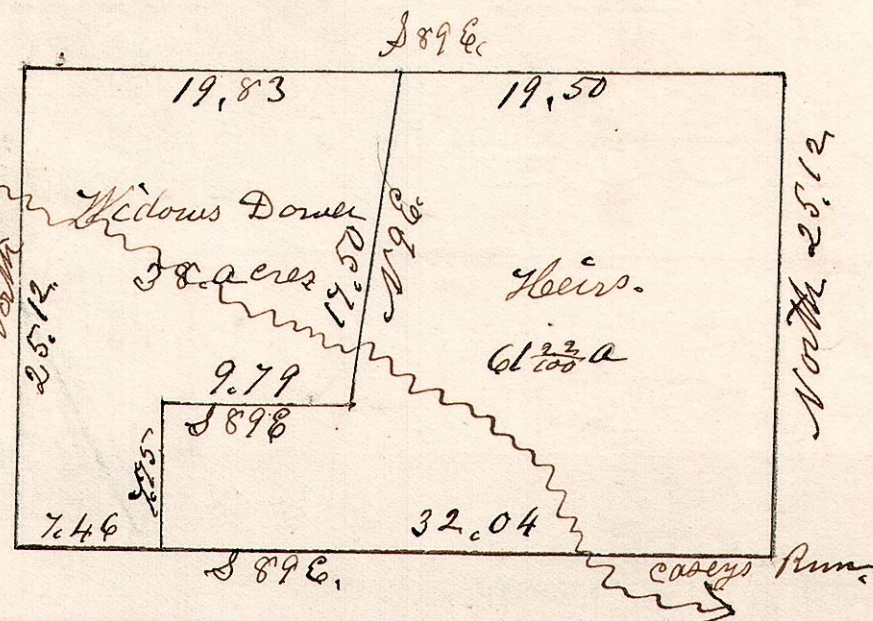
Surveyed the $3\frac{7}{100}$ acres for John Gleann April 27th 1870.
Surveyed the $\frac{1}{2}$ acre piece for John Gleann November 16th 1870.

of S.W. corner of S 12, T 14, R 12.

7.9.16. $\frac{3}{4}$

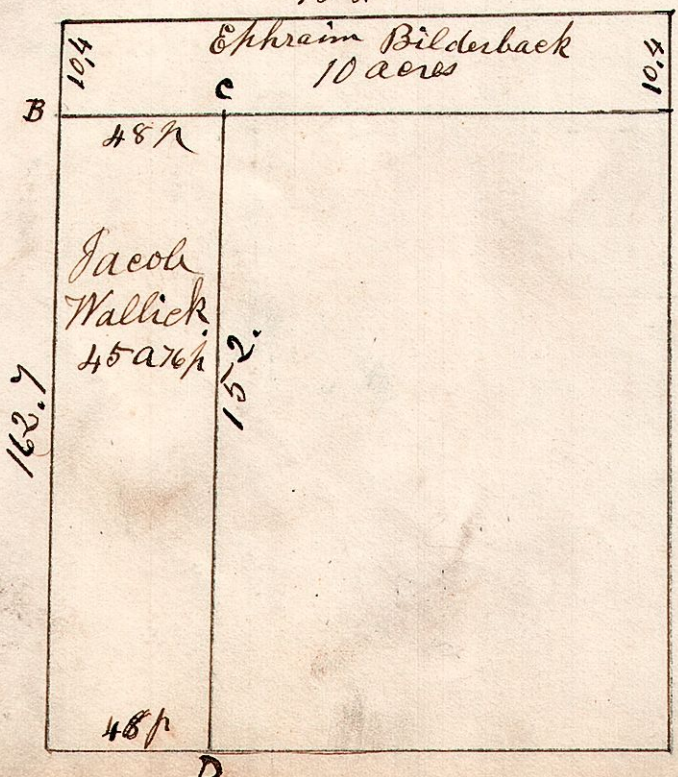
May 18th 1842. Surveyed and subdivided the above, being lot No 16 in the 2nd quarter of Township No 9 of Range No 7 belonging to the widow and heirs of Daniel Candler deed of which I do hereby certify above to be a correct plat of the same. S. Robinson Surveyor.

N.B. Post at each corner.



7.9.21. $\frac{3}{4}$

Lot 21, in 3rd q. T 9 R 7. School Land



May 26th 1842. Surveyed the above

- A. Sugar, 15. N 16 E 13. Ironwood 6. S 36 E 13.
- B. Maple 18. S 55 E 15. W. Walnut 12. N 27 E 21.
- C. Oak 24 S 50 W 19.
- D. Stone the corner.