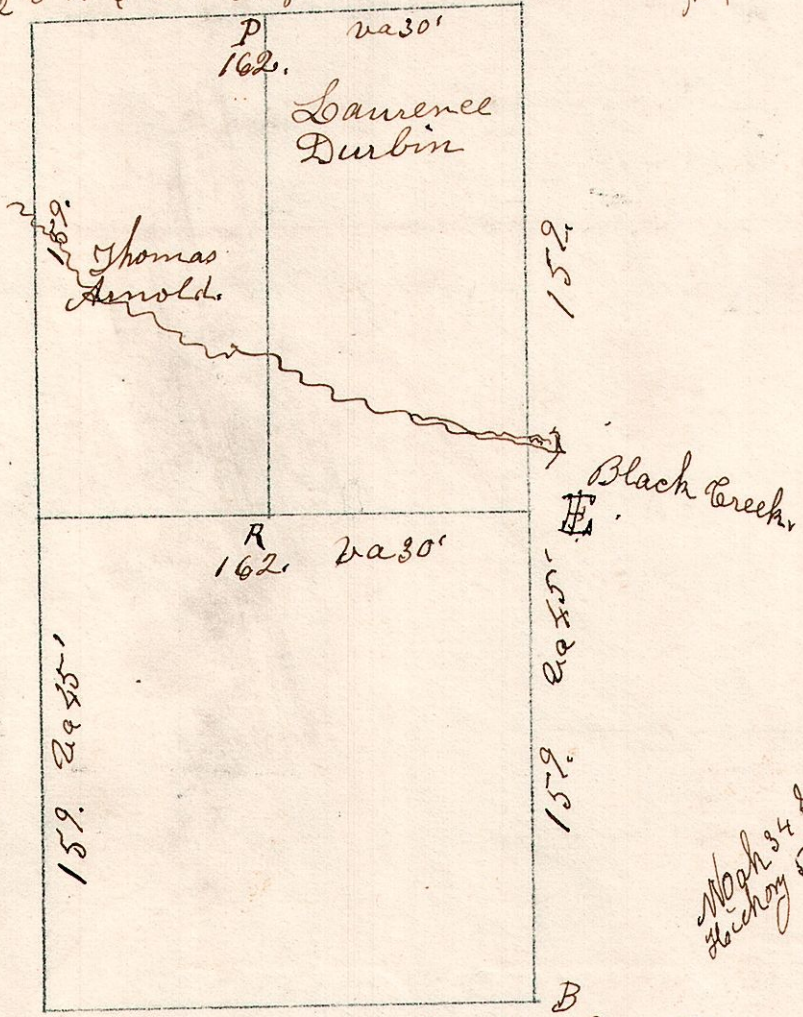


8.8.9 December 11th 1827. Surveyed the West half of Section 9. Township 8. Range 8, in the following manner, and for the following persons.

Hickory 9 $\frac{1}{2}$ 30 W 12. Maple 8 $\frac{1}{2}$ 45 W 16.
Elm 12 $\frac{1}{2}$ 15 E 37. Sugar 13 $\frac{1}{2}$ 70 E A 4.



W Oak 10 $\frac{1}{2}$ 102 20 E
Maple 13 $\frac{1}{2}$ 45 25 E

Maple 34 $\frac{1}{2}$ 85 E 24 E
Hickory 5 $\frac{1}{2}$ 170 W 21

B Oak 9 $\frac{1}{2}$ 50 W 63.
do 8 $\frac{1}{2}$ N 46 E 25.

Post in Barrena
Hickory & links.

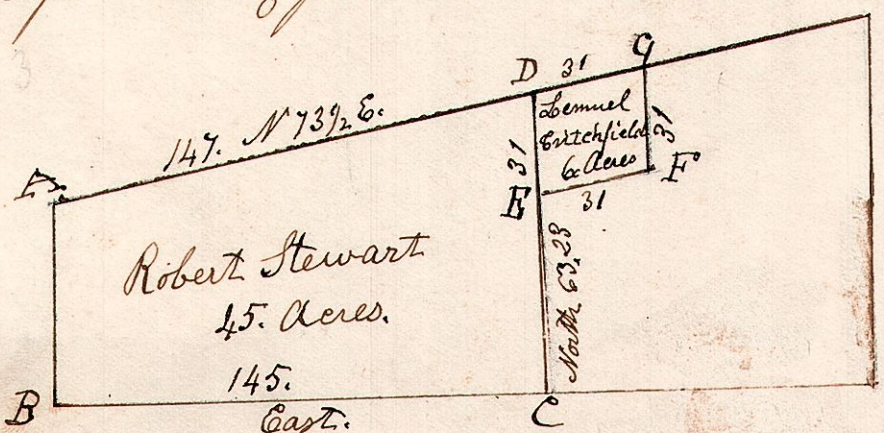
E. B. Oak 15 $\frac{1}{2}$ N 77 $\frac{1}{2}$ E 23.
Beech 20 $\frac{1}{2}$ N 30 $\frac{1}{2}$ W 22.

P. Stone Corner
R. Stone Corner

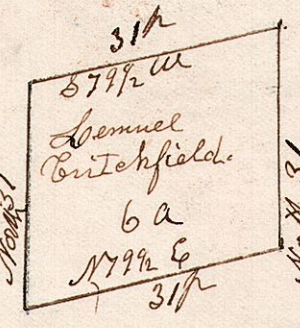
Between S 37 $\frac{1}{2}$ E Post on South
Sugar 18. West 5.

On north, W. Ash 30 $\frac{1}{2}$ N 75 E 30.
Chestnut 29 $\frac{1}{2}$ N 80 W 29.

8.9.25th April 17th 1827. Surveyed two lots. (Tax Rights) taken off lot No 25. T. R. 8. Sec 2, in the following manner and for the following persons.

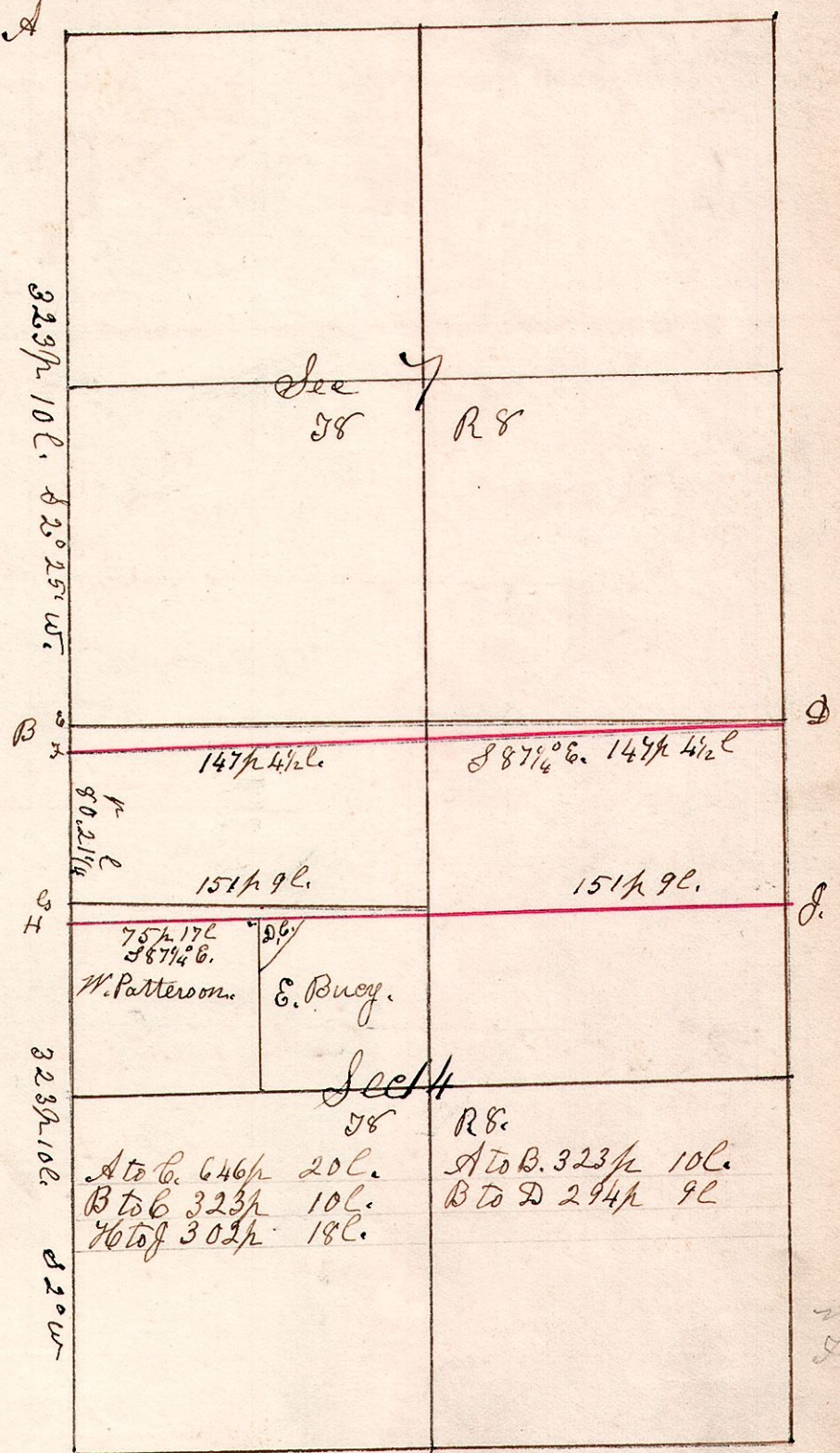
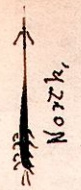


- A W Elm 15 $\frac{1}{2}$ S 49 W 12.
- " Sugar 12 $\frac{1}{2}$ S 51 E 14.
- B Sugar 15 $\frac{1}{2}$ S 3 E 20.
- " Beech 10 $\frac{1}{2}$ S 23 $\frac{1}{2}$ W 24
- C Hickory 5 the corner
- D Hickory 4 $\frac{1}{2}$ N 52 $\frac{1}{2}$ W 32.
- " B. Oak 4 $\frac{1}{2}$ N 14 E 40
- E B. Oak 5 $\frac{1}{2}$ N 81 E 17
- " W Oak 3 $\frac{1}{2}$ S 66 $\frac{1}{2}$ E 7
- F W Oak 16 $\frac{1}{2}$ N 30 W 46.
- G Post. No Bearing trees.



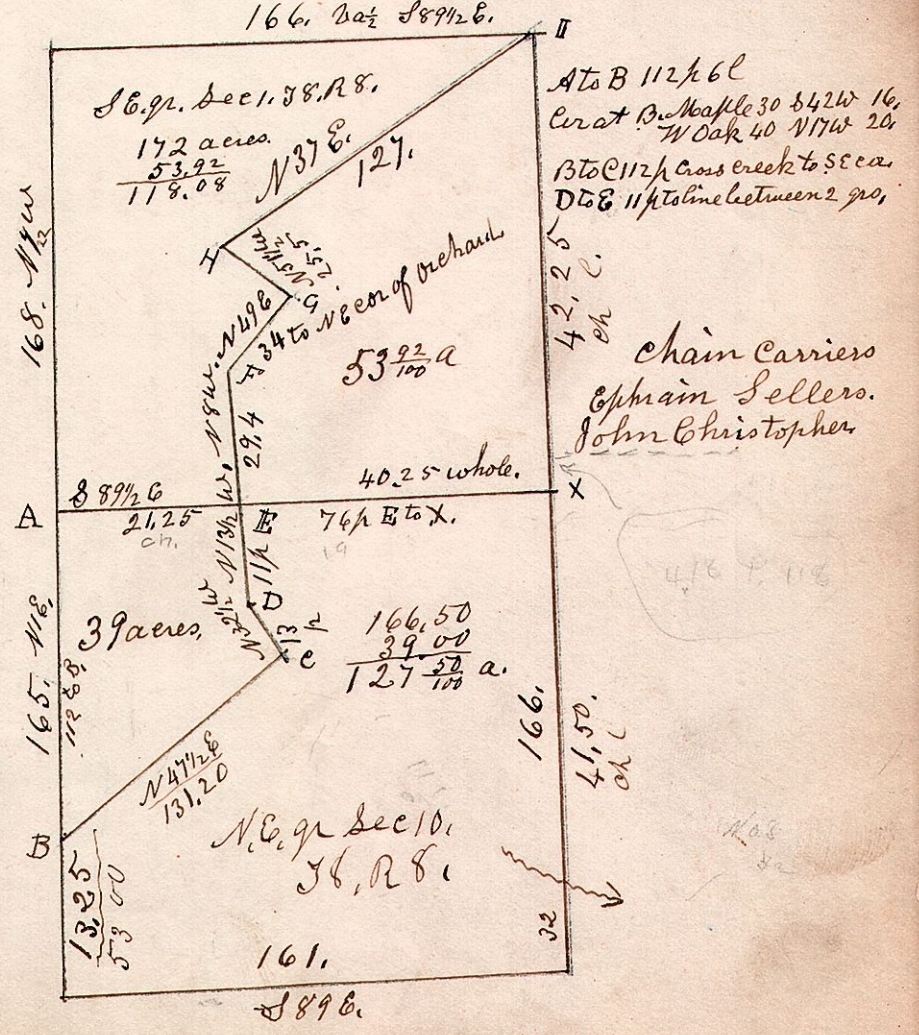
The 45 acre piece sold at Auction in Concord Mass 1824.
The 6 acres sold at Millisburg in 1826, Dec 11.

8.8.14. July 18th 1872.



Red lines Run by Robinson. F is Stone corner, Equi-distant from A & C, and is 16 links west, and 2 $\frac{1}{2}$ 15 C South of the stone at E. H is 1 $\frac{1}{2}$ 21 C South of Sprongles Corner at G. F to H is 80 $\frac{1}{2}$ 21 $\frac{1}{2}$ C, being one fourth the length of Sec 14.
Surveyed July 18th 1872. By H. H. Robinson Surveyor.

8.8.14th 10. April 28th 1842.
John Shrimplin and James Lile.



Chain carriers
Cphain Sellers.
John Christopher

The 45 acre piece sold at Auction in Concord Mass 1824.
The 6 acres sold at Millisburg in 1826, Dec 11.