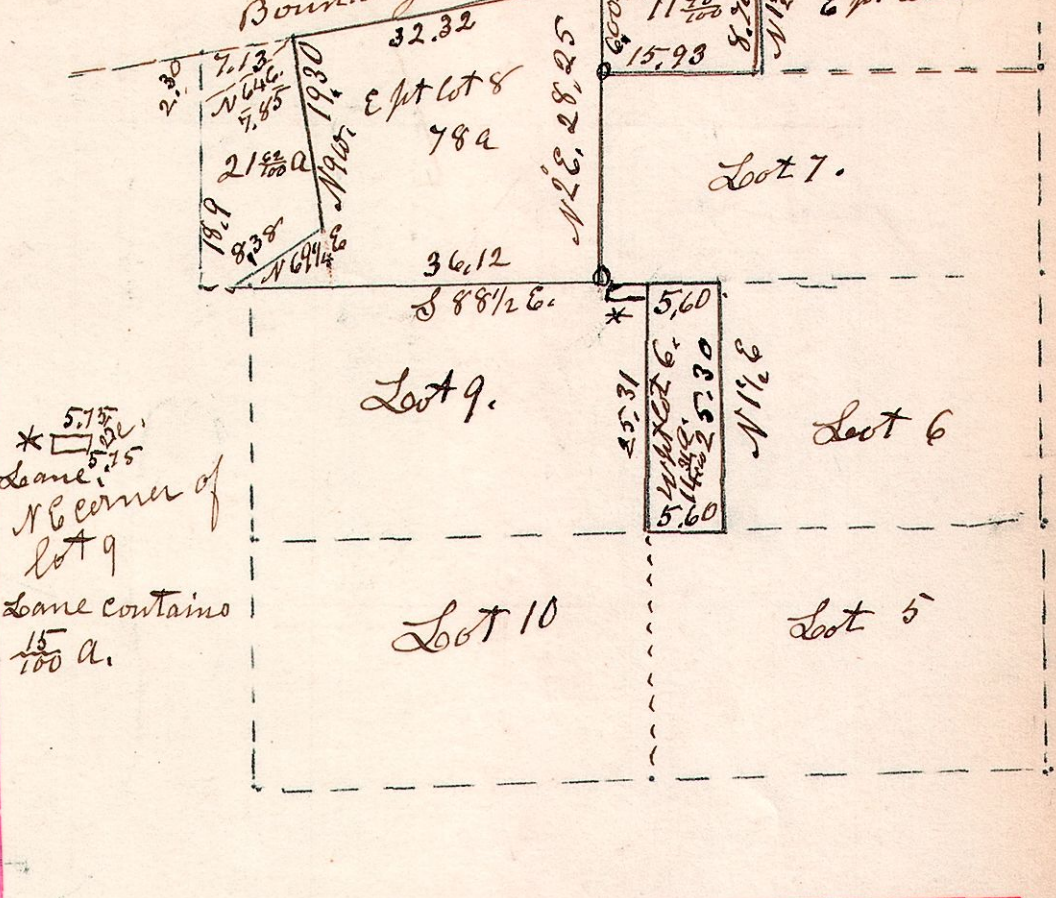
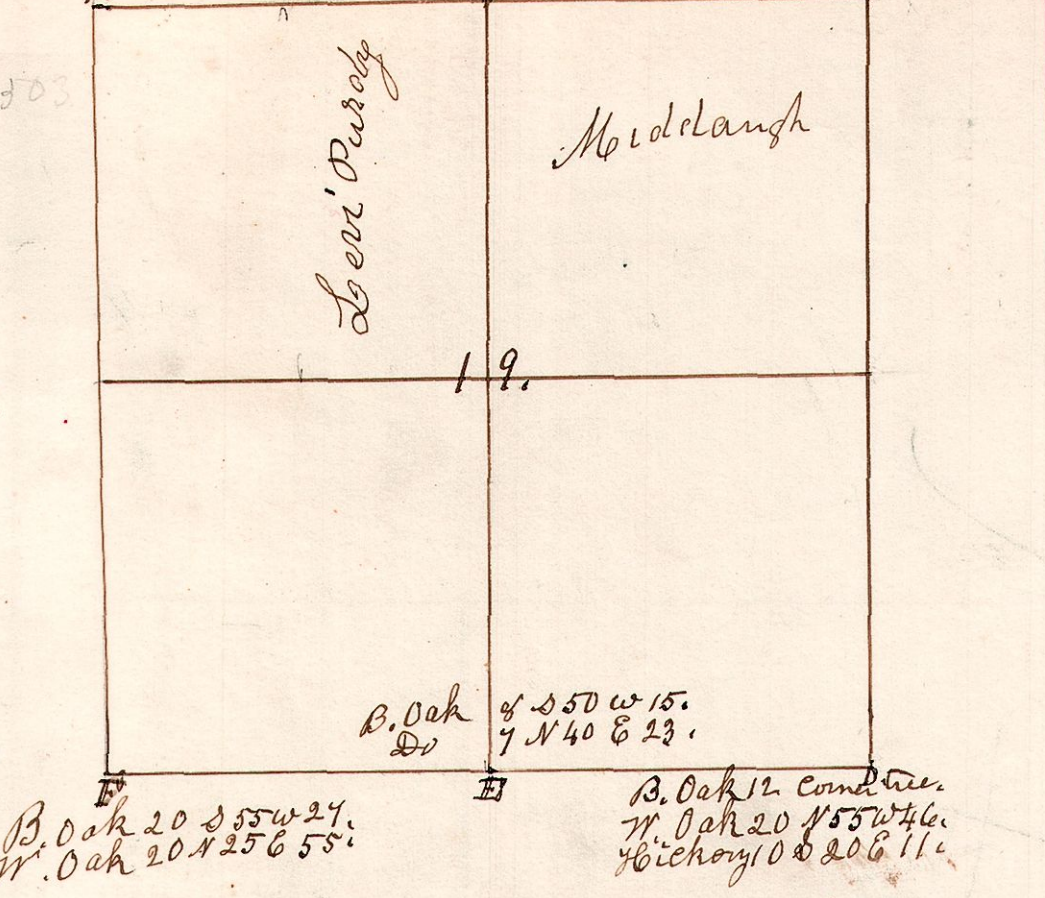


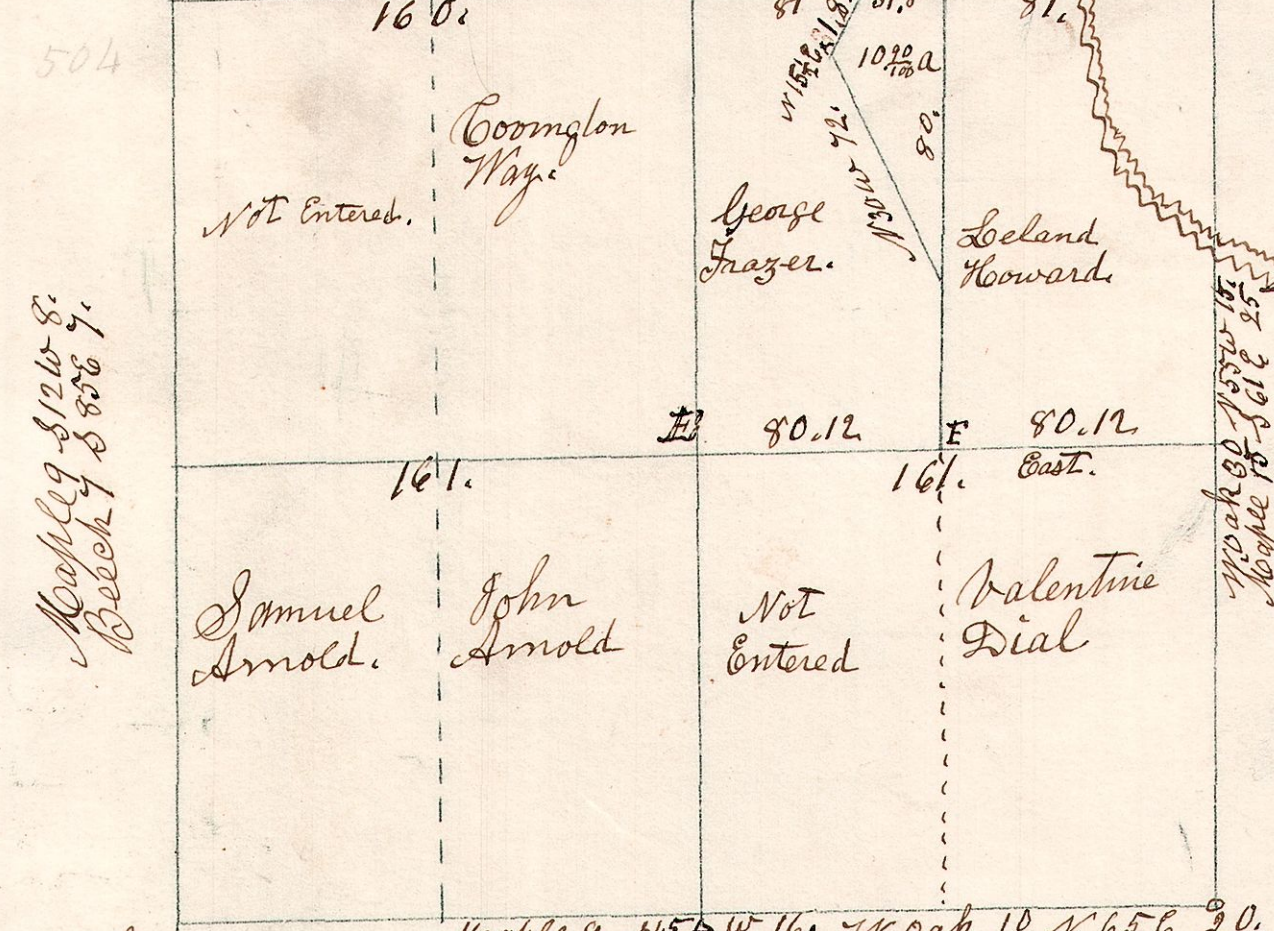
6, 8, 19. Section 19. T8. R8.  
 Hickory 13 N75E 7. W Oak 18 N30W 22. W Oak 10 N45W 52.  
 Maple 15 S60W 14. Do 15 S45W 40. Do 20 S30E 11.

Feb 21<sup>st</sup> 1871.  
 Surveyed for James Adams.



8. 8. 2. Feb 5<sup>th</sup> 1833. Surveyed Section No 2 in T8. of R8. in the following manner, and for the following persons.

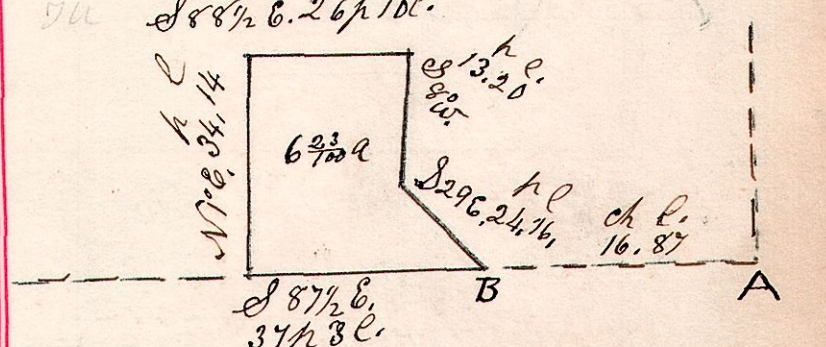
Maple 12 N75E 15. W. Oak 20 N5E 26. Sugar 12 S70E 39.  
 Do 11 N80W 12. Gum 8 S30W 5. Beech 20 S70W 37.  
 S 89E. B 162.17. G



Hickory 9 N30W 12. Maple 9 S45E 16. W. Oak 10 N65E 20.  
 Elm 12 S15E 37. Sugar 18 N70E 21. Maple 13 S45W 55.  
 Dec 7<sup>th</sup> 1861. Surv the above 10<sup>00</sup>/<sub>100</sub> acre piece for J.W. May

F <sup>o</sup>	Chestnut	30	S35E	46
"	Walnut	12	N8W	14
F <sup>o</sup>	W. Oak	24	N85W	60
"	Gum	8	N58E	9
G	W. Oak	18	S78W	26
"	Elm.	12	S67E	8

8. 9. 20. 1/2<sup>pt</sup> of lot 20 in 12<sup>th</sup> gr. T8. R8  
 April 22<sup>nd</sup> 1868.



Surveyed for James Moorehead  
 April 22<sup>nd</sup> 1868. From A to B. 16.87.

8. 9. 33. 1/2<sup>pt</sup> May 16<sup>th</sup> 1829. Surveyed lot 18 33. and the west part of lot No 22. in the 12<sup>th</sup> gr. of the 9<sup>th</sup> Township and 8<sup>th</sup> Range. for Robert Painter.

- D W. Oak 40. N79E 13.
- " Do 25. S61W 39.
- C. Maple the corner.
- B Gum 10. N17E 31.
- A W. Oak 24. S15W 56.
- W. Oak 12. N76E 19.
- do 12. S70E 37 1/2
- W. Oak 12. S51E 31
- do 20. N73E 17
- G W. Oak 40. S3E 29
- Ash 8. S30E 32
- F. Hickory 18. N32E 29
- do 12. S4E 24

