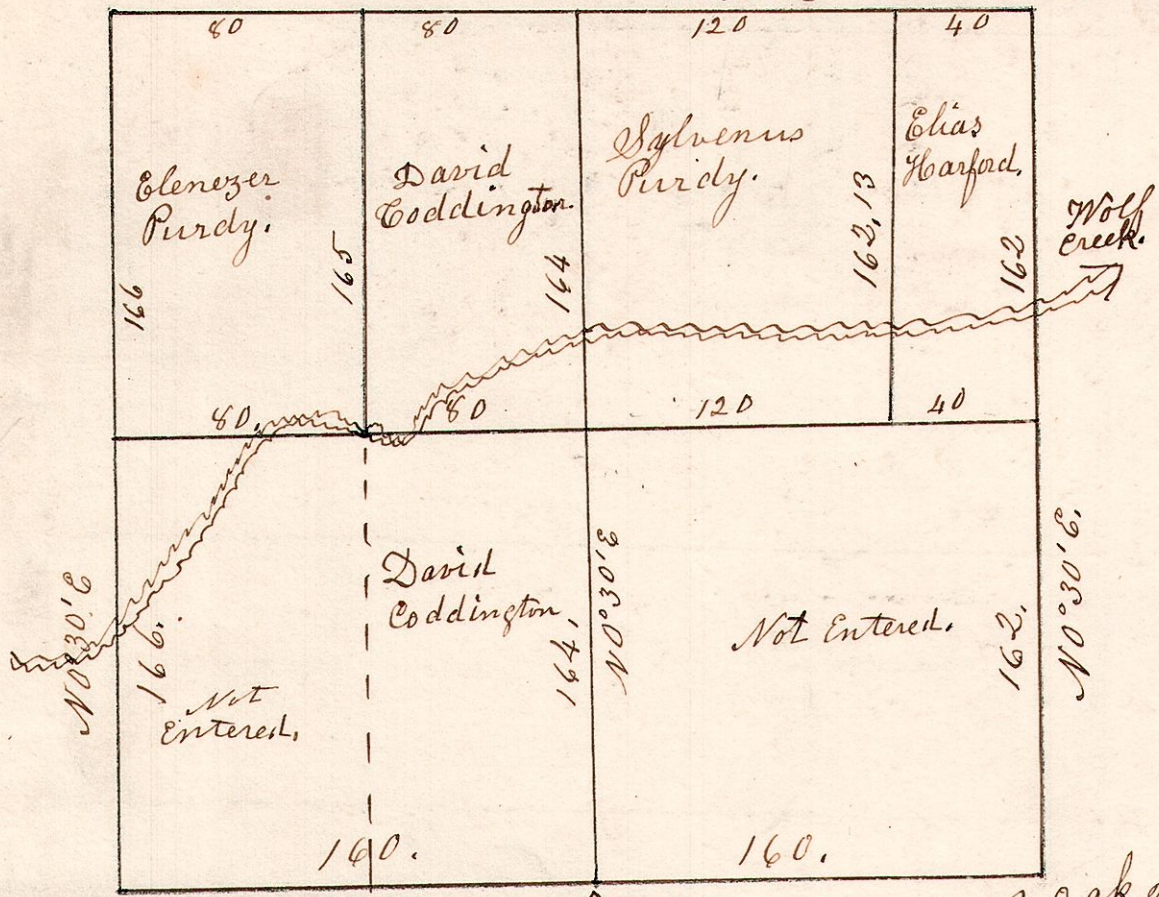


8. 8. 17.

January 16<sup>th</sup> 1835. Surveyed Section 17. T8. R8. in the following manner.

Chestnut 13 S 50 W 32.  
W. Oak 22 S 4 E 48.

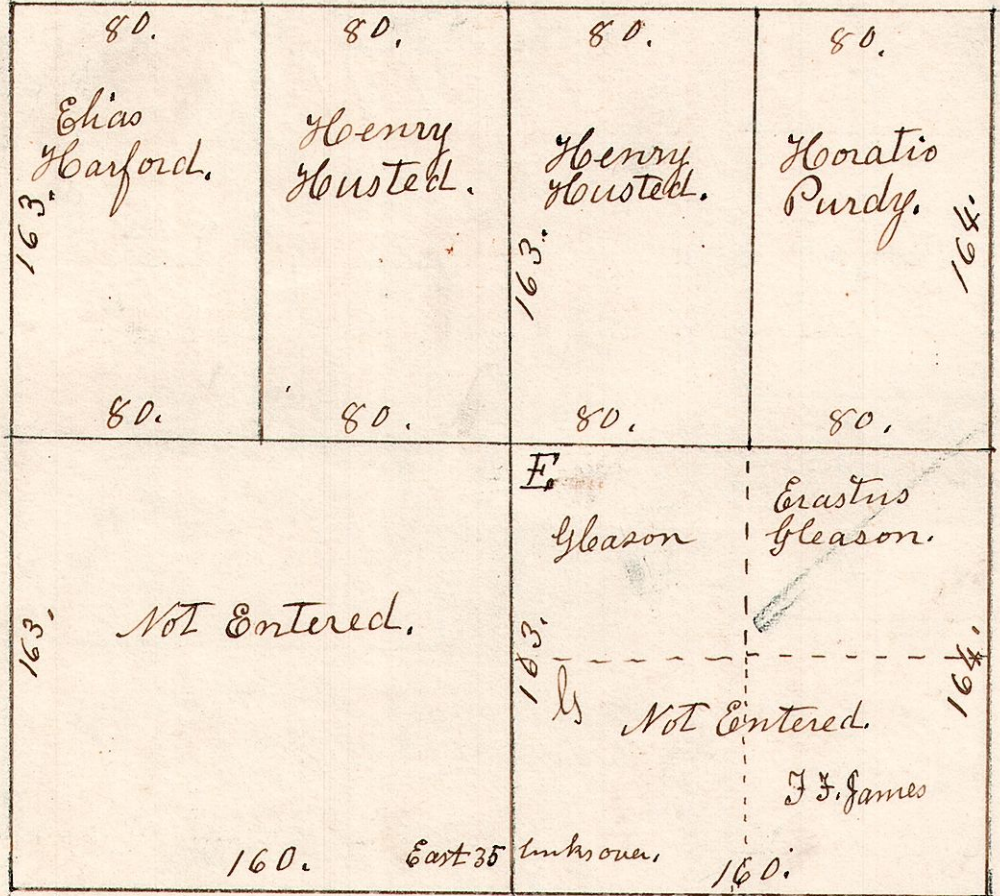
B. Oak 8 S 80 W 24.  
B. Oak 12 S 80 E 23.  
M. 68 N  
W. Oak 13 S 45 E 33.  
Do 8 S 30 W 26.



B. Oak 15. N 1 E 140.  
W. Oak 14. S 5 W 450.  
Stones planted at the corners, East A  
B. Oak 20 S 50 W 47.  
Do 12 N 85 E 50.

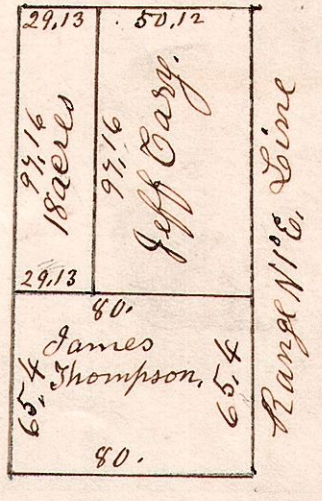
8. 8. 18 January 16<sup>th</sup> 1835. Surveyed Section 18. in T8. of Range 8. as follows.

W. Oak 13 S 45 E 33.  
Do 8 S 30 W 26.  
S. Oak 15 S 50 W 90.  
W. Oak 14 N 8 E 111.  
W. Oak 7 N 10 E 21.  
B. Oak 13 S 40 W 6.



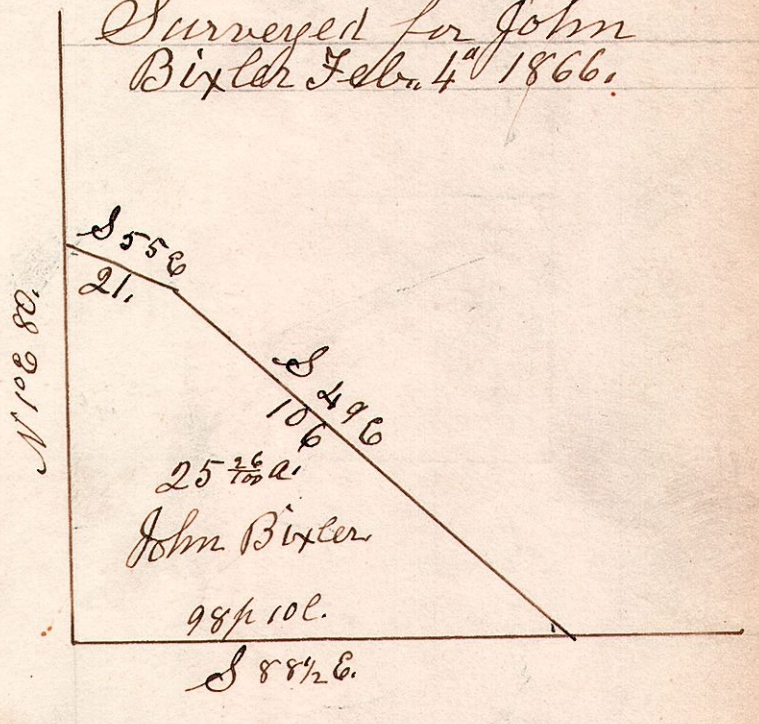
B. Oak 20 S 10 E 70.  
Do 12 N 85 E 50.  
W. Oak 13 North 15.  
Hickory 10 S 45 E 12.  
B. Oak 5 S 10 E 70.  
Do 7 N 70 W 100.

8. 8. 10. December 28<sup>th</sup> 1854. Nw pt. of 8<sup>th</sup> of Sec. of S. 10. T8. R8. 89 E

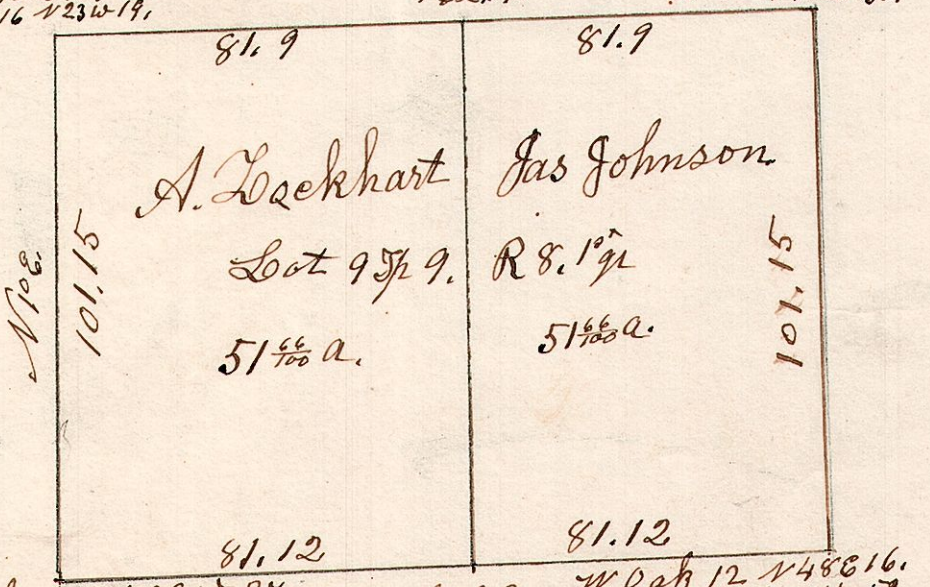


August 29<sup>th</sup> 1839. Surveyed the S 1/2 of S 18. T8. R8. for Erastus Gleason & J. J. James.

8. 9. 7. 1/2 S W pt of lot 7. 4<sup>th</sup> T9. R8. School Land. Surveyed for John Bixler Feb. 4<sup>th</sup> 1866.



8. 9. 9. March 7<sup>th</sup> 1854. Surveyed lot 9 1/2 T8. R8. 12<sup>th</sup> Sugar 12 S 71 E 14.  
Do 16 N 23 W 19.  
162.19.  
W. Oak 12 S 10 E 40.  
Do 12 N 50 W 30.



W. Oak 15 S 39 W 37.  
Dogwood 4 N 11 W 13.  
889 E.  
163.  
W. Oak 12 N 48 E 16.  
Hickory 8 S 61 W 52.