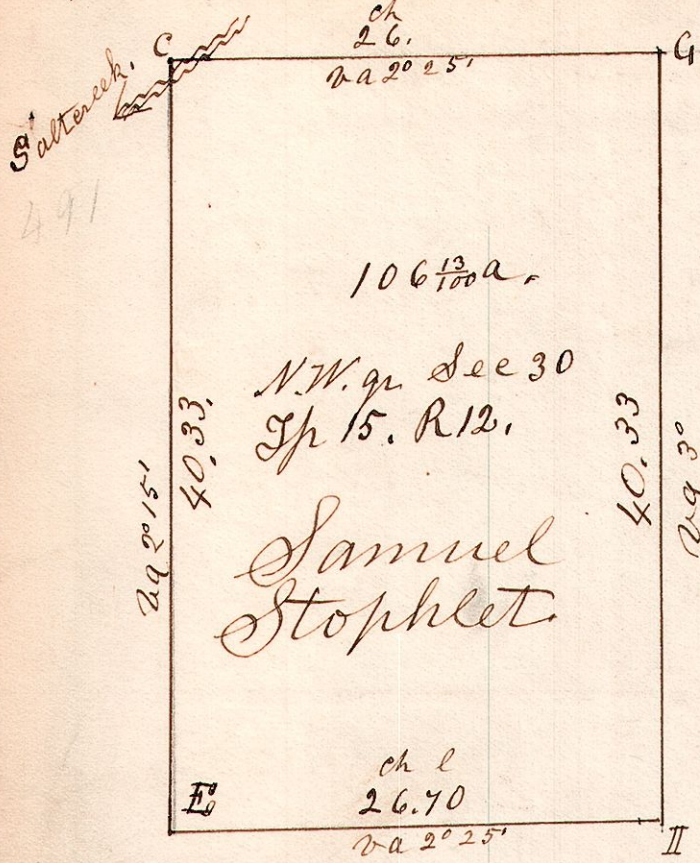


12, 15, 30.

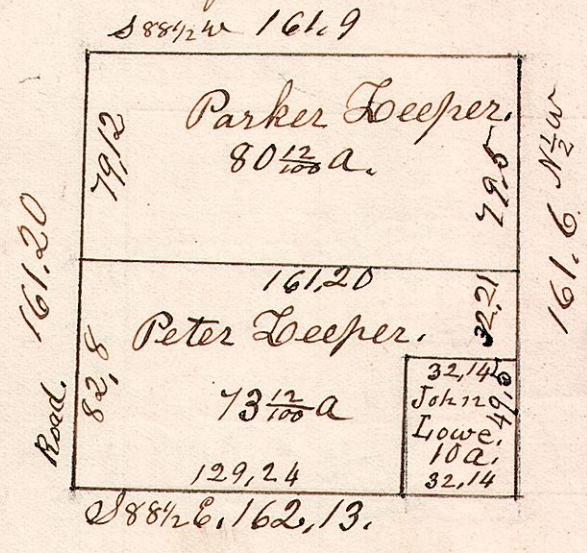
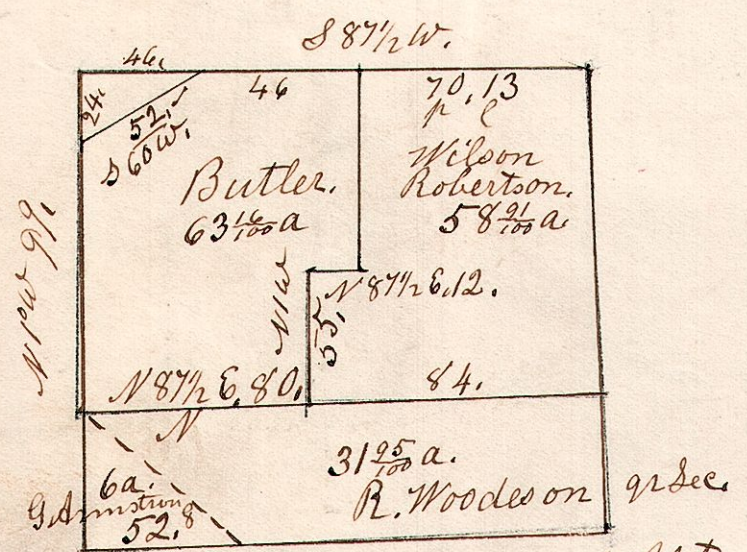


C	Sugar	20	N43 E	6
"	Cherry	12	S 8 E	46
E	W. Oak	36	N11 E	18
"	Beech	12	S29W	12
G	R. Oak	20	S25W	24
"	Noaple	12	S88W	35
I	Ash	14	S 6 1/2 E	11
"	W. Oak	18	N75 W	26

Surveyed the above January 20<sup>th</sup> 1826,  
Being the north west quarter of Section  
No 30, Township No 15, of Range No 12,  
Of which the above is a correct plat of the same.  
Samuel Robinson Co. Surveyor.

12, 15, 32. May 27<sup>th</sup> 1852.  
S.W. q. Sec 32, T 15, R 12.

12, 15, 32. May 29<sup>th</sup> 1852. Surveyed  
the NW q. of S 32. in T 15 of R 12

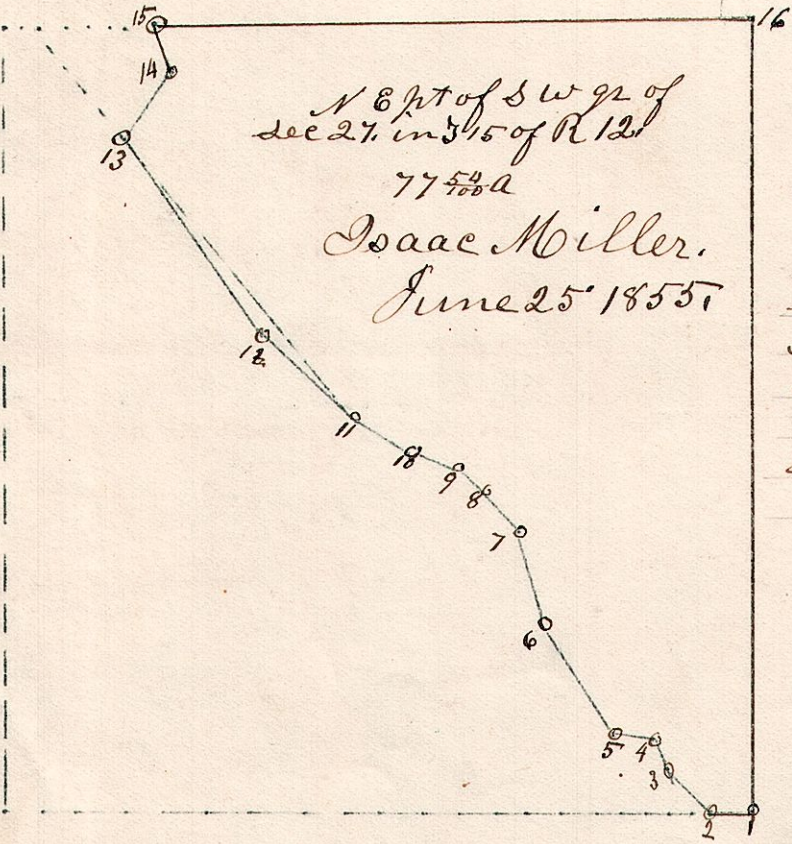


va of the lines in 1852.  
is 3/4 to the right of those marked on the plat.

12, 15, 27.

June 25<sup>th</sup> 1855.  
Stations, Bearings & Distances  
Commencing at the S.E. corner of the  
S.W. q. of Sec 27, T 15, R 12, the division  
line through said gr section

- 1 S 89 1/2 W ch l 2.15
- 2 N 54 1/2 W 3.25
- 3 N 21 1/2 W 1.57
- 4 N 83 1/2 W 2.06
- 5 N 33 1/2 W 6.50
- 6 N 15 W 5.10
- 7 N 41 1/2 W 3.00
- 8 N 48 W 1.83
- 9 N 42 W 2.50
- 10 N 60 3/4 W 3.20
- 11 N 47 W 7.00
- 12 N 35 1/2 W 12.22
- 13 N 35 E 4.00
- 14 N 22 W 2.50
- 15 N 89 1/2 E 31.25
- 16 S 1/4 E 40.28.
- 17 To the place of
- 18 beginning
- 19 Containing 77 <sup>5</sup>/<sub>100</sub> a.



Straight line from Sta 11 to 13  
N 40 3/4 W 80 p 30. taking one acre off  
Miller's part continued from Sta 13  
to B. N 40 3/4 W 29 p 50 adding 2 1/2 a  
to Miller's part from B to Sta 15  
24 p 11 l from NW corner to B.  
5 per 11 in ks.