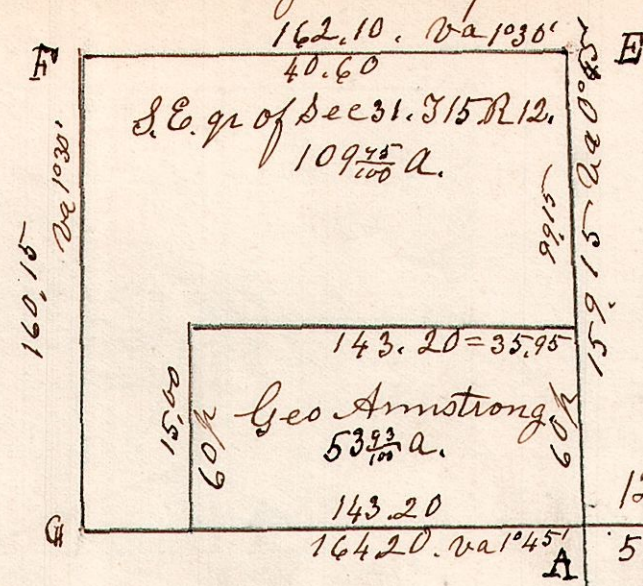


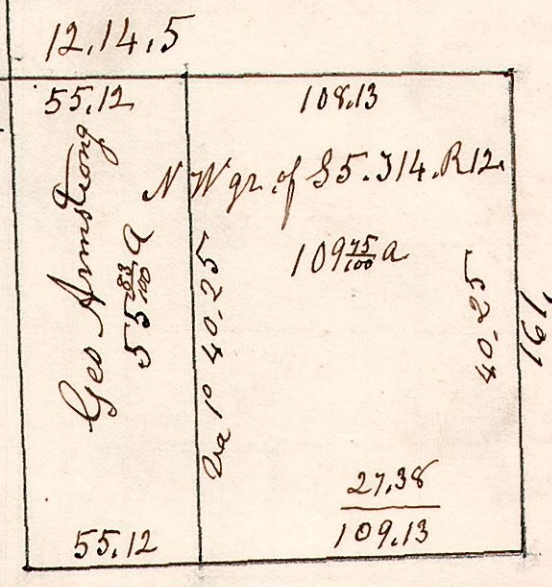
12.15.31. May 19<sup>th</sup> 1837. Surveyed the following.

464

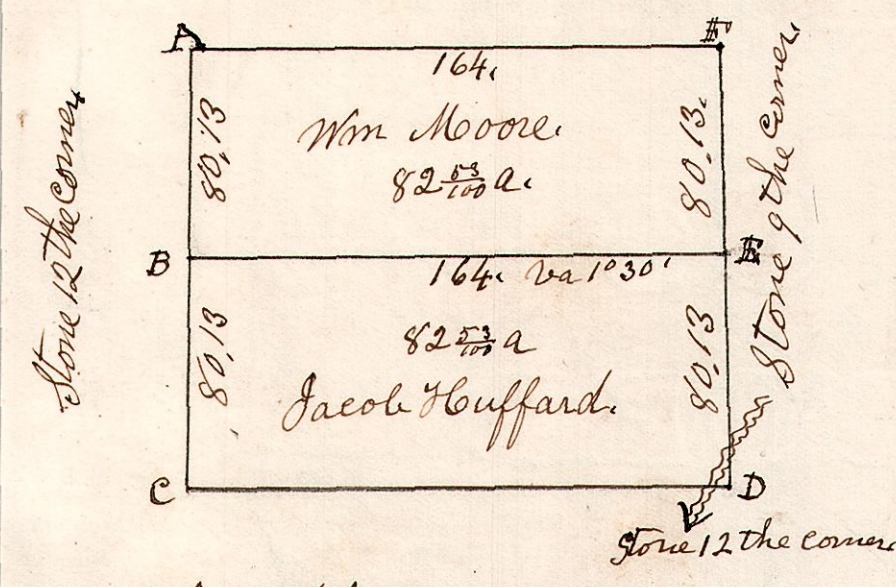


|                        |          |    |        |    |
|------------------------|----------|----|--------|----|
| E                      | W Oak    | 20 | S 55 E | 28 |
|                        | Do       | 18 | S 5 W  | 30 |
| F                      | W Oak    | 30 | N 53 E | 16 |
|                        | Chestnut | 36 | S 12 W | 26 |
| G                      | Hickory  | 10 | S 8 W  | 4  |
|                        | Maple    | 10 | N 14 E | 14 |
| Post at other corners. |          |    |        |    |

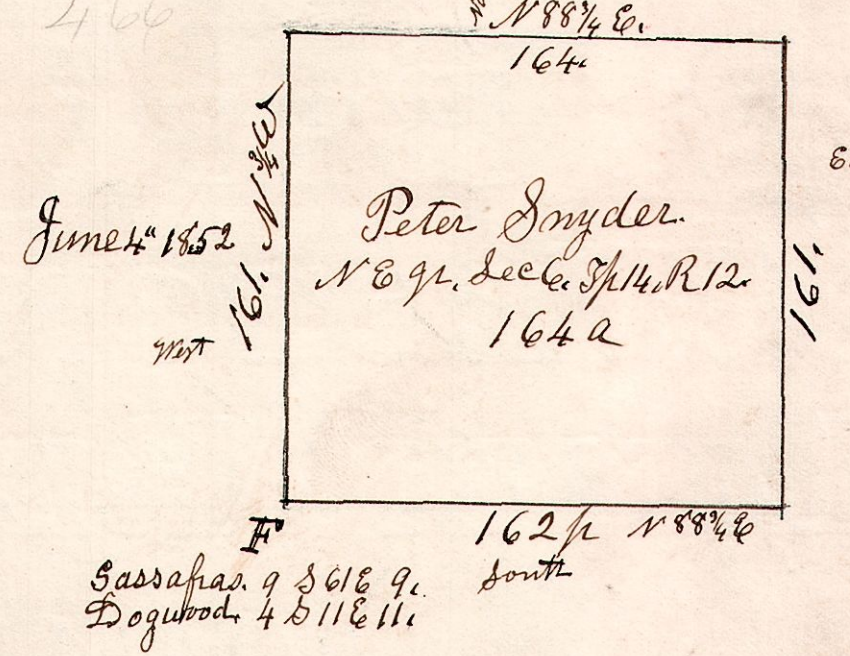
|   |         |    |        |    |
|---|---------|----|--------|----|
| A | W Oak   | 20 | West   | 4  |
|   | Do      | 40 | N 10 E | 13 |
| B | Beech   | 12 | West   | 19 |
|   | Poplar  | 10 | S 57 E | 21 |
| C | Beech   | 16 | N 5 E  | 18 |
|   | W Oak   | 16 | S 22 W | 17 |
| D | W Oak   | 24 | S 12 W | 32 |
|   | Hickory | 9  | N 32 E | 16 |



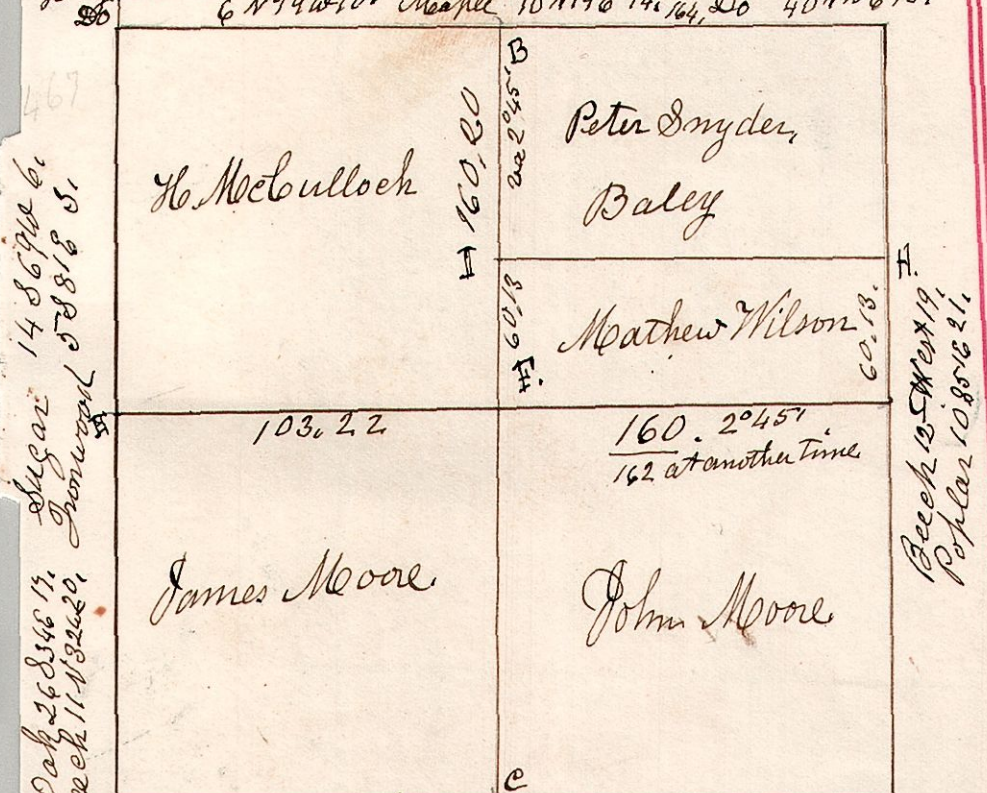
12.14.4. January 1<sup>st</sup> 1835. Surveyed the NW qr. of Sect 4. T 14 of R 12, for the following persons.



12.14.6. North East quarter of Section 6 in Township 14. of Range 12.

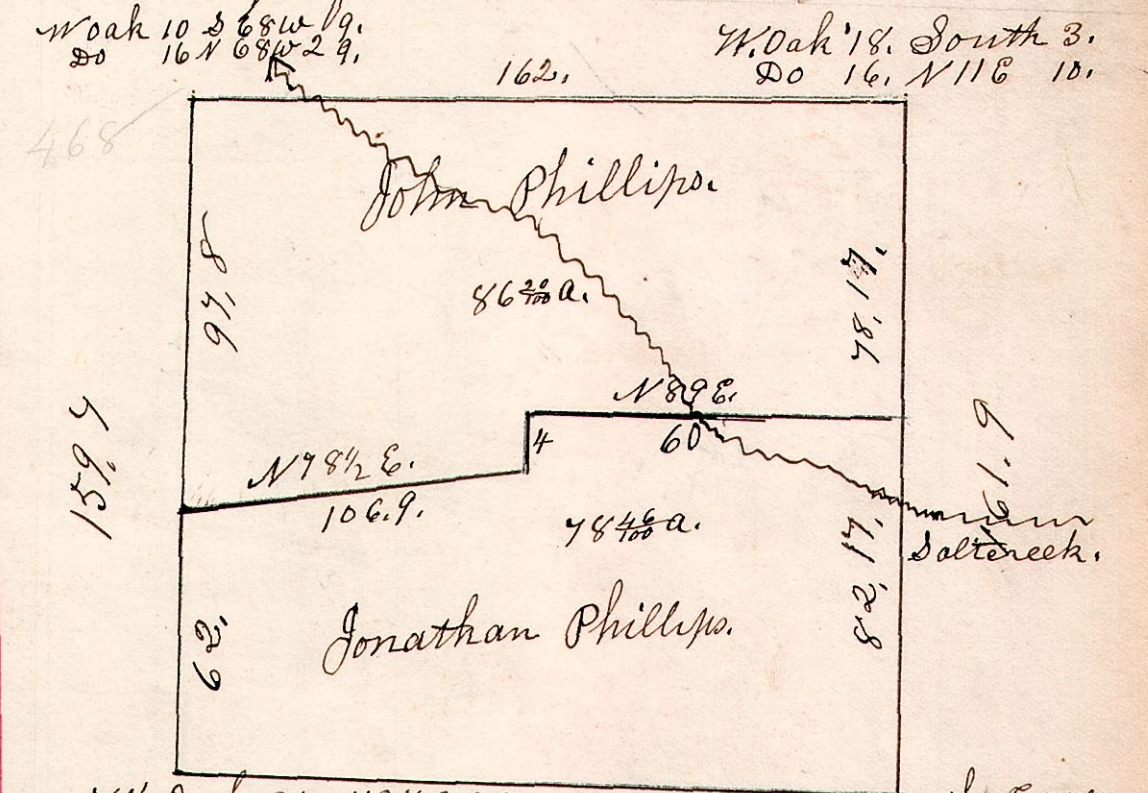


12.14.6 April 23<sup>rd</sup> 1827. Surveyed Sec. 6. in T 14. R 12. as follows. Dogwood 7 N 39 E 18. Hickory 10 S 4 W 4. W Oak 20 West 4. 6 N 74 W 10. Maple 10 N 19 E 14. Do 40 N 10 E 13.



W Oak 14 S 69 W 6. Sugar 11 N 82 E 20. Beech 11 N 82 E 20. Dogwood 11 N 82 E 20.

12.15.28 April 4<sup>th</sup> 1862. Surveyed the NE qr. of Sec 28. T 15. R 12.



W Oak 10 S 68 W 19. Do 16 N 68 W 29. W Oak 18. South 3. Do 16. N 11 E 10.

W Oak 12 East 18. Dogwood 15 S 63 W 6. Do 20 S 5 W 13. W Oak 8 N 57 E 18. F. R. Oak 15 N 77 W 18. Sassafras 9 S 61 E 13. " Dogwood 4 S 11 E 11. H. Post in lane. I Poplar 6. North 4.

April 4<sup>th</sup> 1862.