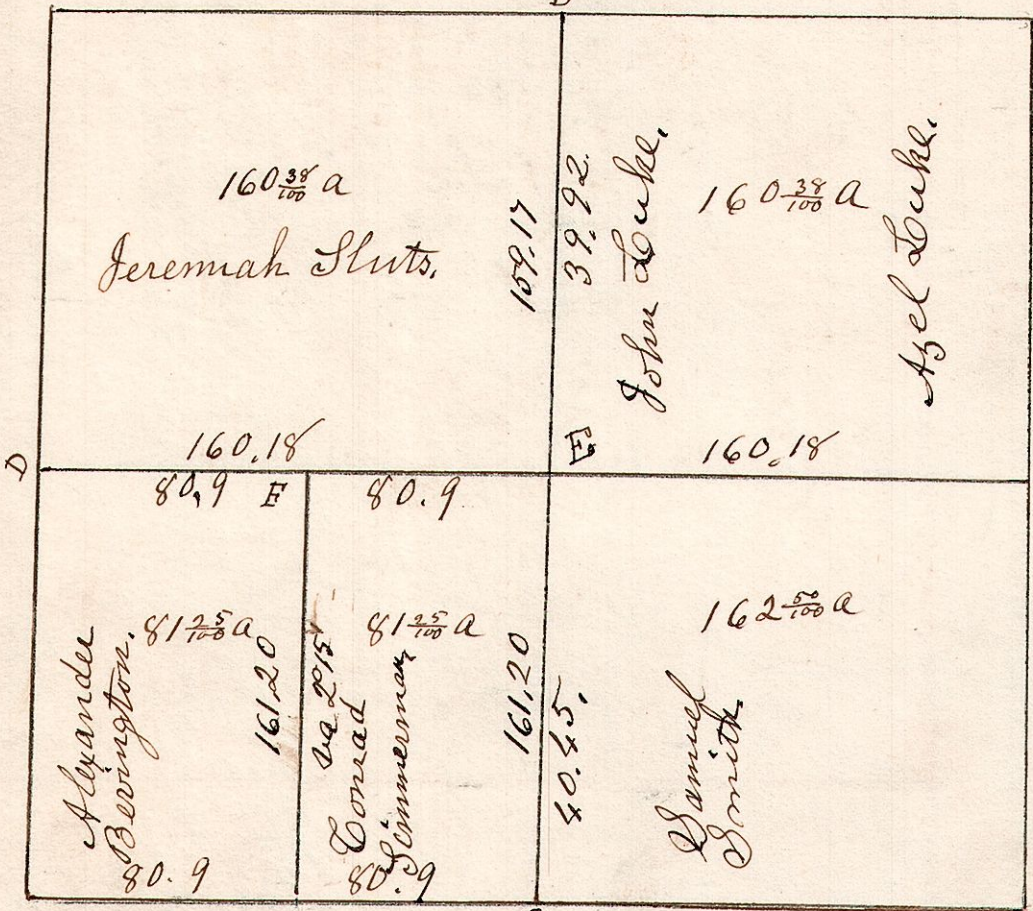


December 17<sup>th</sup> 1829. Surveyed Sec 25 in S 15 R 12.  
 12.15.25. in the following manner.

W. Oak 14 S 14 E 33.  
 Hickory 14 N 12 W 22.

461  
 W. Oak 15 N 19 W 23.  
 Beech 10 S 15 E 23.



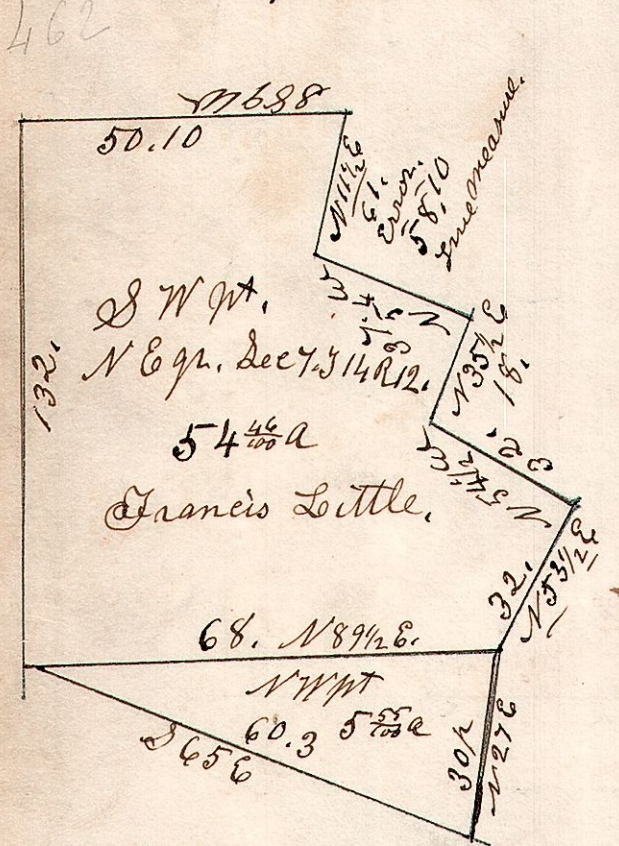
Hickory 10 N 58 E 46.  
 Chestnut 30 S 77 W 48.

E. Poplar 15 N 27 W 9.  
 " 12 S 8 W 30.  
 E. Sugar 15 S 17 E 40.  
 " Hickory 13 S 79 W 68.  
 W. Oak 24 S 59 W 12 1/2  
 " Hickory 18 N 48 W 6 1/2

E & W 321.11 2°45'

A  
 Maple 12 S 17 W 19.  
 B. Oak 16 N 20 E 18.

12.14.7. S.W. pt. N.E. q. of  
 Sec 7 S 14 R 12.



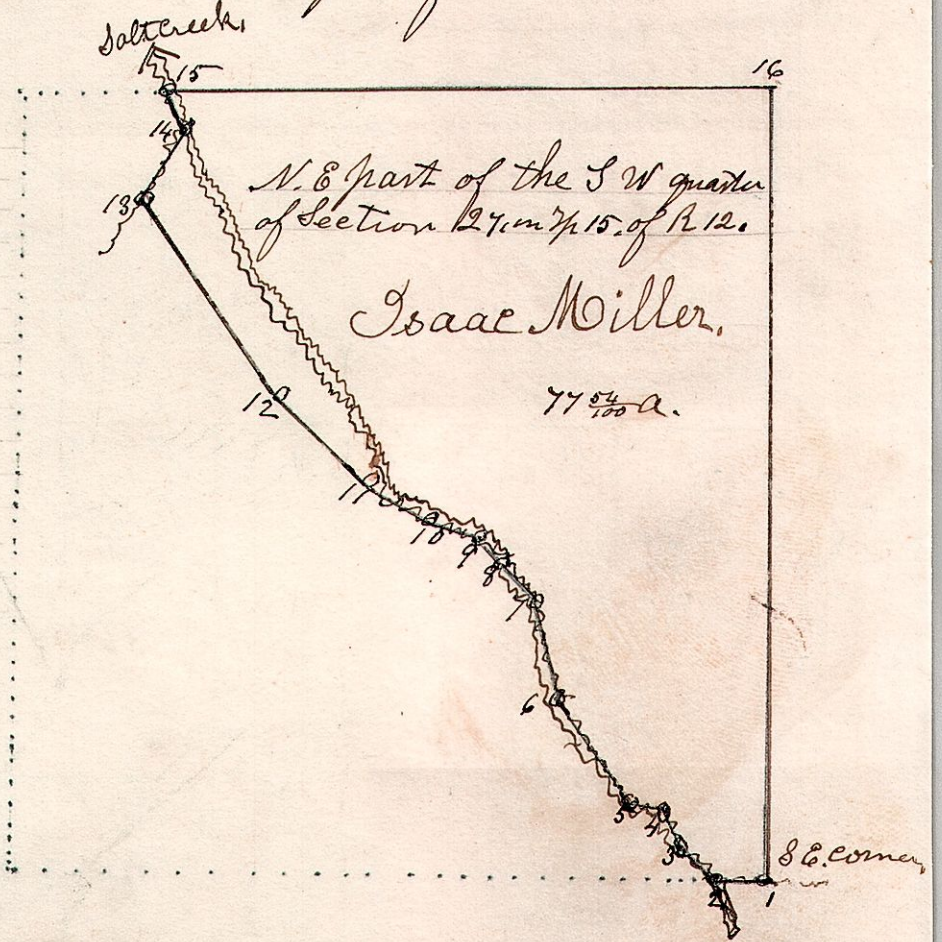
S.E. q.  
 The above will lack about  
 one acre, it will be 53 3/4 a.

12.15.27. N.E. part of the South west  
 quarter, of Section 27. in S 15 of R 12.

463

Sta	Bearing	Ch	L.
1	S 89 1/2 W	2	15
2	N 54 1/2 W	3	25
3	N 21 1/2 W	1	57
4	N 83 1/2 W	2	06
5	N 33 3/4 W	6	50
6	N 15 W	5	10
7	N 41 1/2 W	3	00
8	N 48 W	1	83
9	N 72 W	2	50
10	N 60 1/2 W	3	20
11	N 47 W	7	00
12	N 35 1/2 W	12	22
13	N 35 E	4	00
14	N 22 W	2	50
15	N 89 1/2 E	31	25
16	S 3 1/4 E	40	28

To the  
 place of beginning.  
 Containing 77 5/8 acres.



12.14.8.

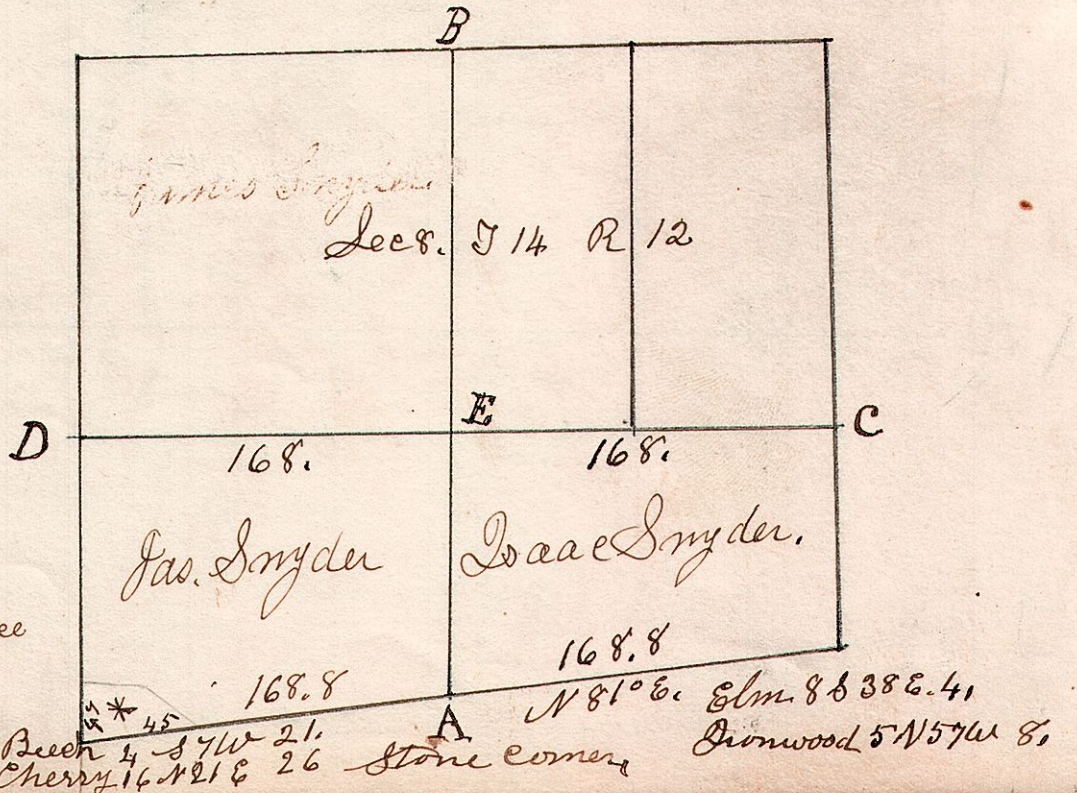
May 19<sup>th</sup> 1871.

Sec 8, T. 14, R. 12.

463

E	W. Oak	20	N 22 W 12 1/2
"	Sassafras	6	S 74 E 23 1/2
B	Hickory	12	S 65 W 21
"	Maple	14	N 44 E 21
C	Maple	10	N 77 W 26
"	W. Oak	16	S 17 E 6
D	W. Oak	30	S 11 W 31
"	Maple	15	N 15 E 27

\* Arnold piece  
 6 7/8 a.



Beech 4 S 4 W 21.  
 Cherry 16 N 21 E 26

Stone corner

Diamond 5 N 57 W 8.