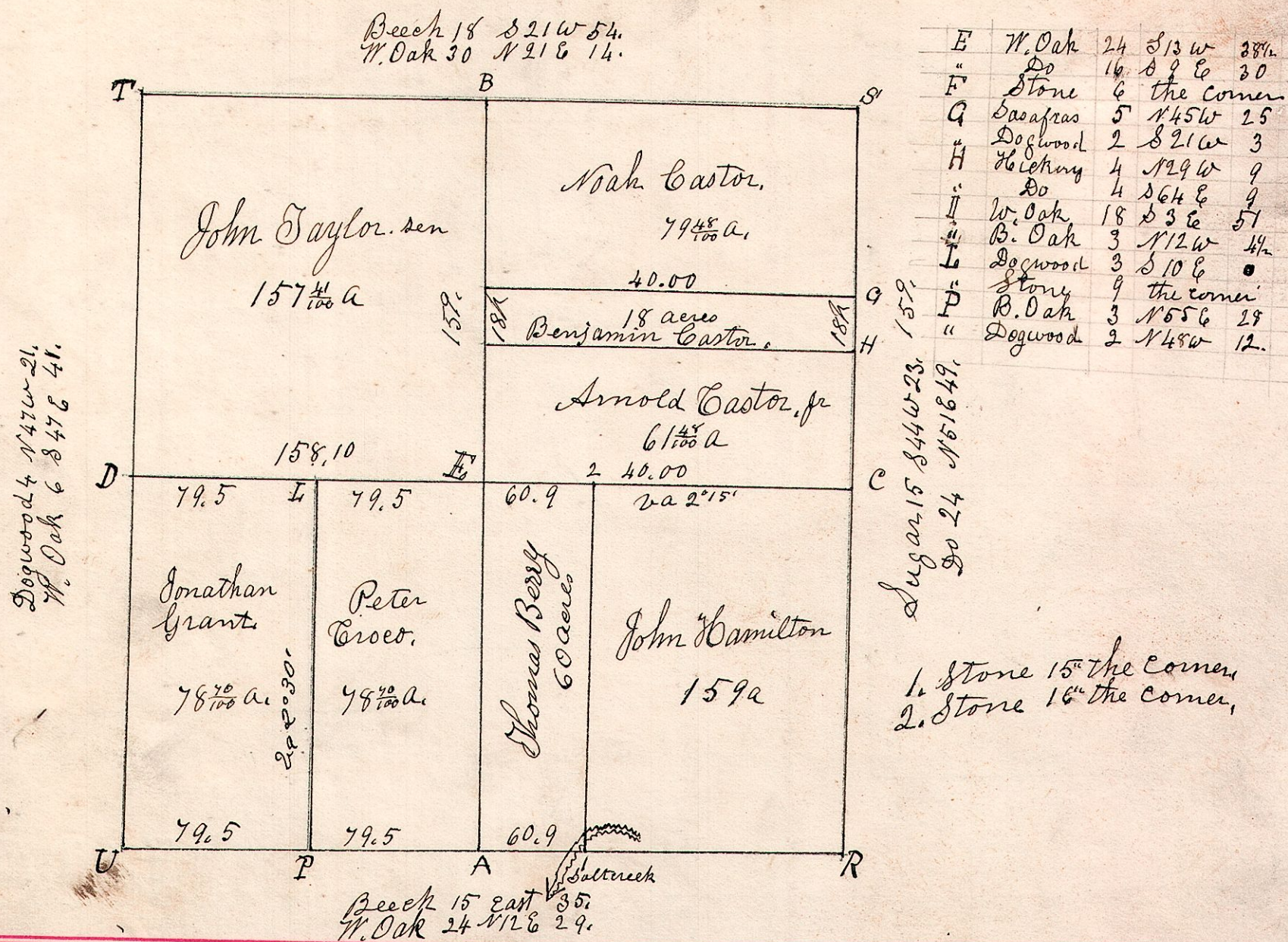
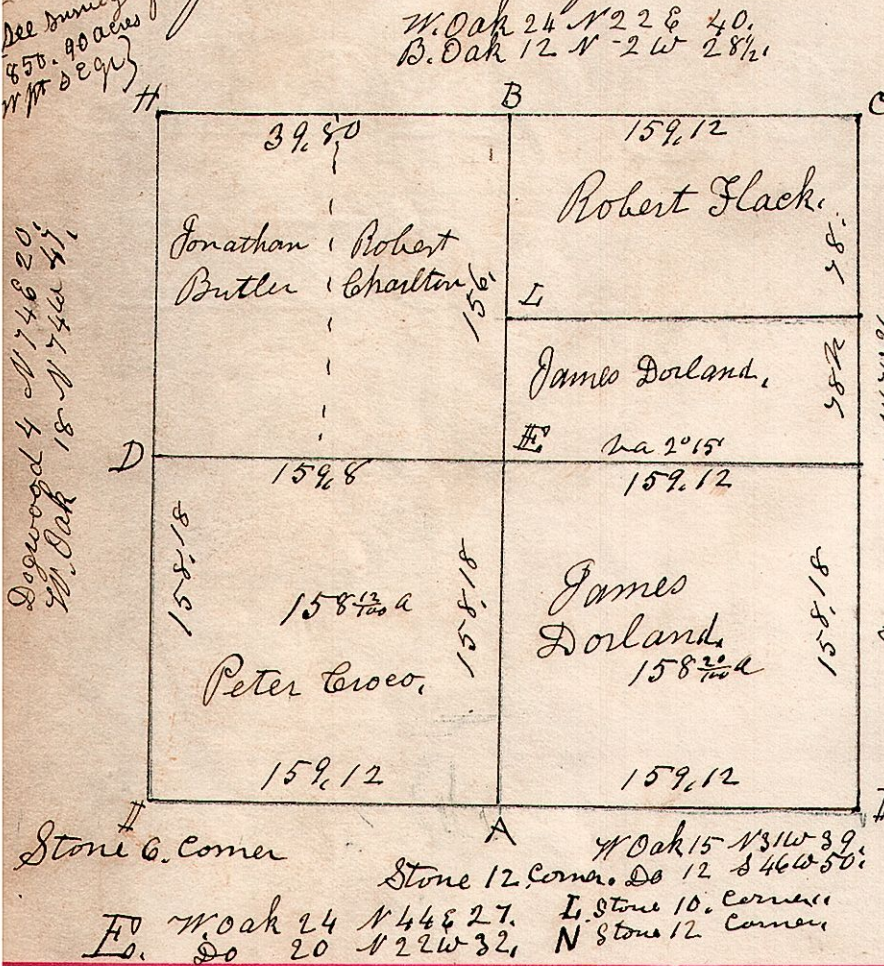


13.14.31.

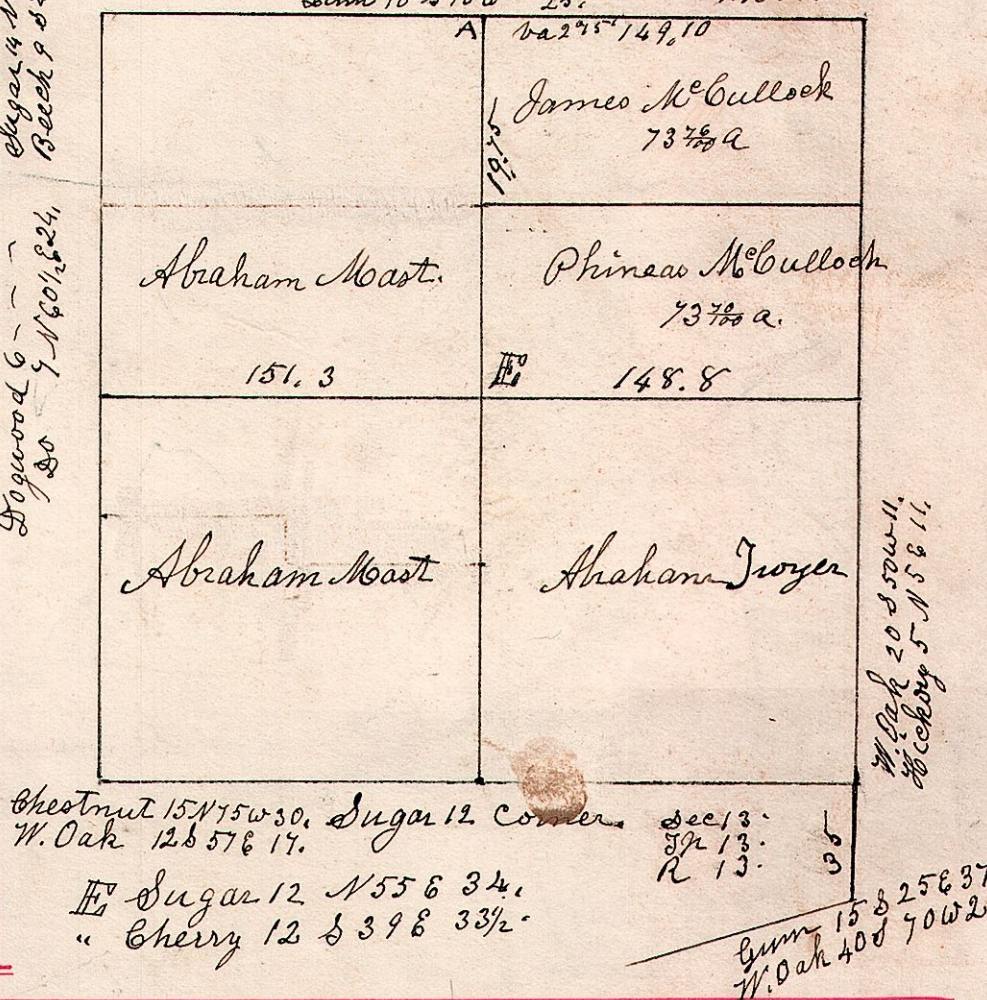
April 15<sup>th</sup> 1831. Surveyed Section 31. in Sp. 14. of R. 13. in the following Manner + for the following Persons.



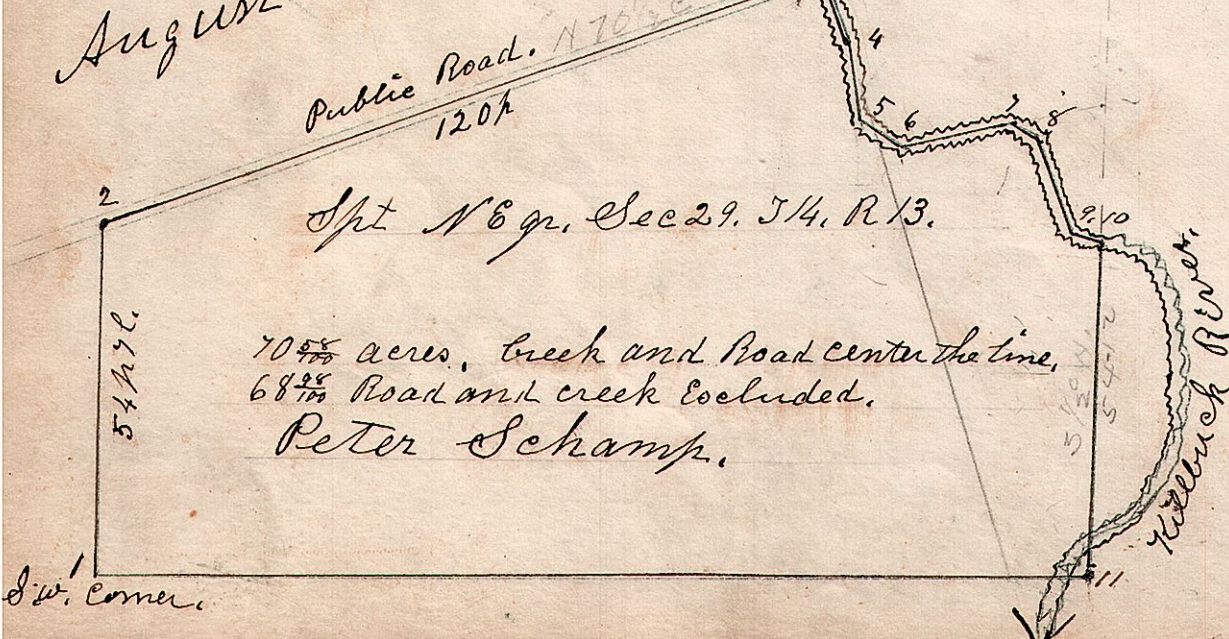
13.14.34 April 16<sup>th</sup> 1831. Surveyed Section 34. in Township 14. of Range 13. as follows.



13.13.12. April 25<sup>th</sup> 1827. Surveyed Section 12 Sp. 13. R. 13.



13.14.29. August 15<sup>th</sup> 1872.



Sta	course	ft	l
1	N 1/4 W	54	7
2	N 70 1/2 E	120	
3	S 22 E	10	
4	S 13 1/4 E	14	
5	S 58 E	7	
6	N 77 E	17	
7	S 67 E	5	
8	S 20 1/2 E	16	
9	S 78 1/2 E	5	
10	S 1/2 W	54	12
11	S 88 1/2 W	157	5

Surveyed the above split of the north east quarter of section 29. in Sp. 14 of Range 13. August 15<sup>th</sup> 1872. S. + H. C. Robinson. Surveyor.