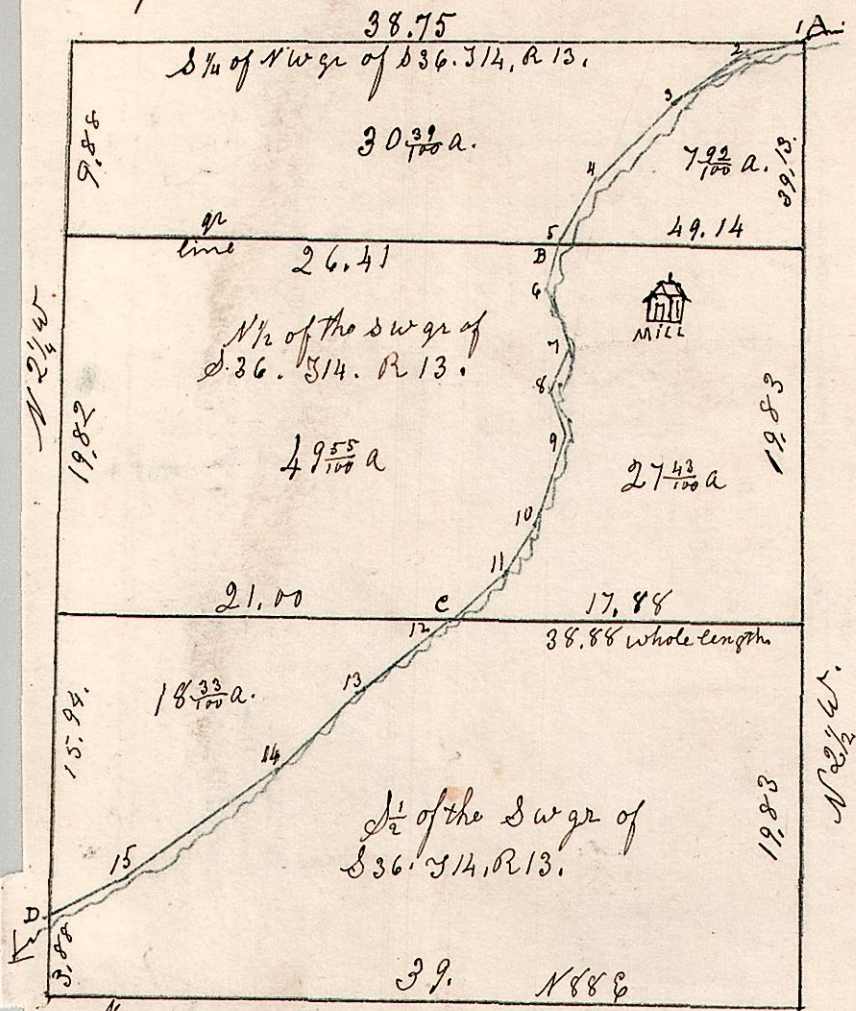


13.14.36.

Sec 36, T14, R13.

April 8<sup>th</sup> 1840.



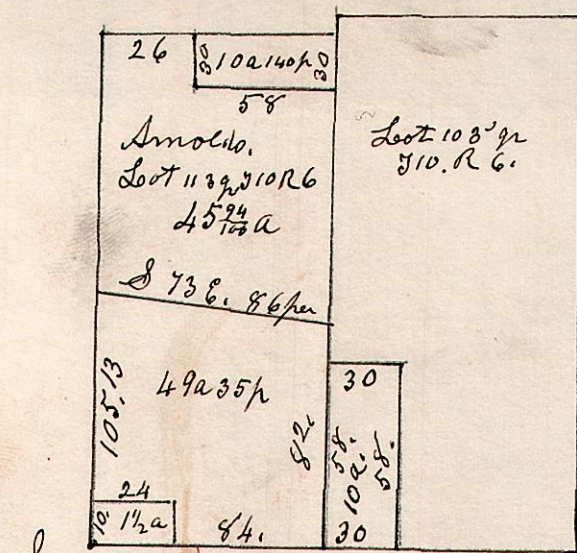
Meanderings of Salt Creek

- 1 S 73 W - 2.50
- 2 S 56 W - 4.50
- 3 S 43 W - 5.75
- B 4 S 30 W - 3.50 to gr line.
- 5 S 15 W - 2.88
- 6 S 22 E - 3.25
- 7 S 18 W - 2.50
- 8 S 23 E - 2.25
- 9 S 16 W - 5.00
- 10 S 27 W - 2.15
- 11 S 47 W - 3.50 to line between E and D.
- 12 S 50 W - 6.25
- 13 S 43 W - 5.75
- 14 S 52 W - 9.75
- 15 S 61 W - 4.50 to W line of S 1/2 gr of D.

6.10.10.3<sup>gr</sup>

March 14<sup>th</sup> 1868, Surveyed

414



S. W. Corner

1/2 acre surveyed for  
Chas Mast, SW corner of Lot 16.

13.14.36.

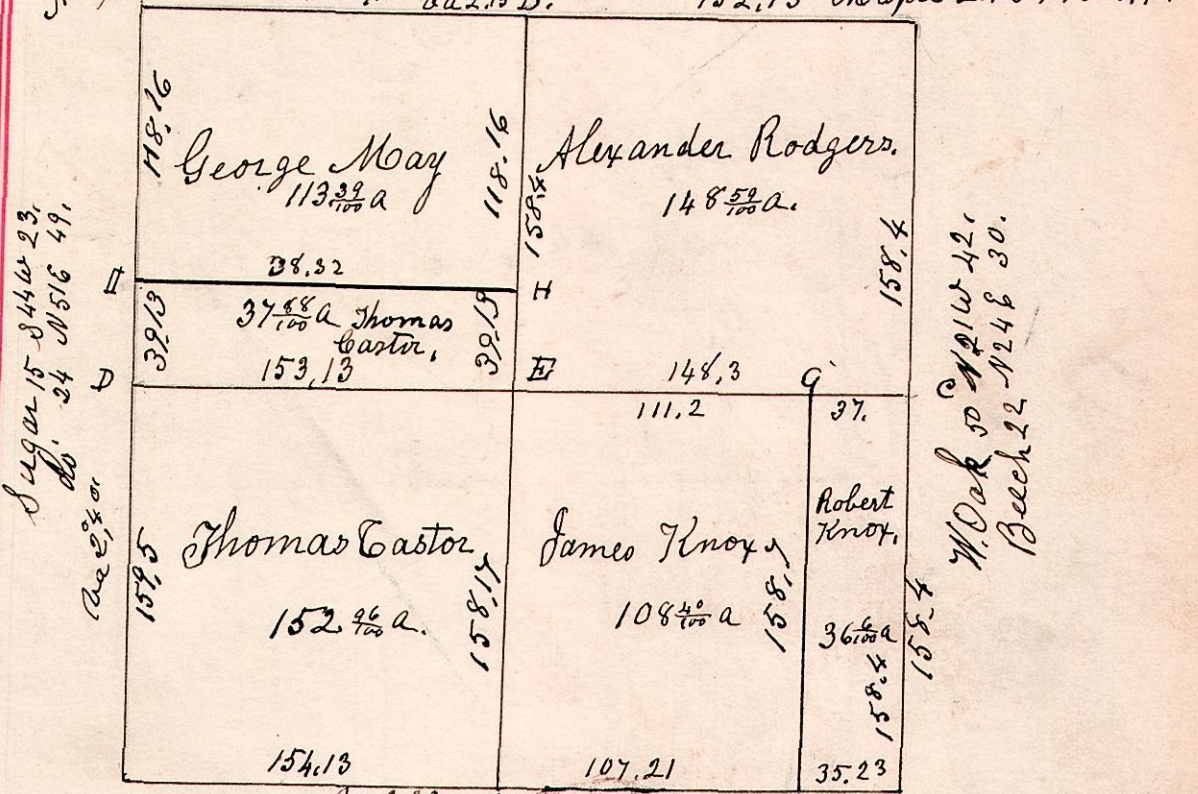
April 3<sup>rd</sup> 1833, Surveyed Sec 36 T14, R13.  
in the following manner & reasons.

135

Alexander Rodgers,  
Surveyor.

Hickory 12 the corner.  
152.13 to a 2.15 B.

Sugar 18 S 42 E 36.  
152.13 Maple 24 S 77 W 47.



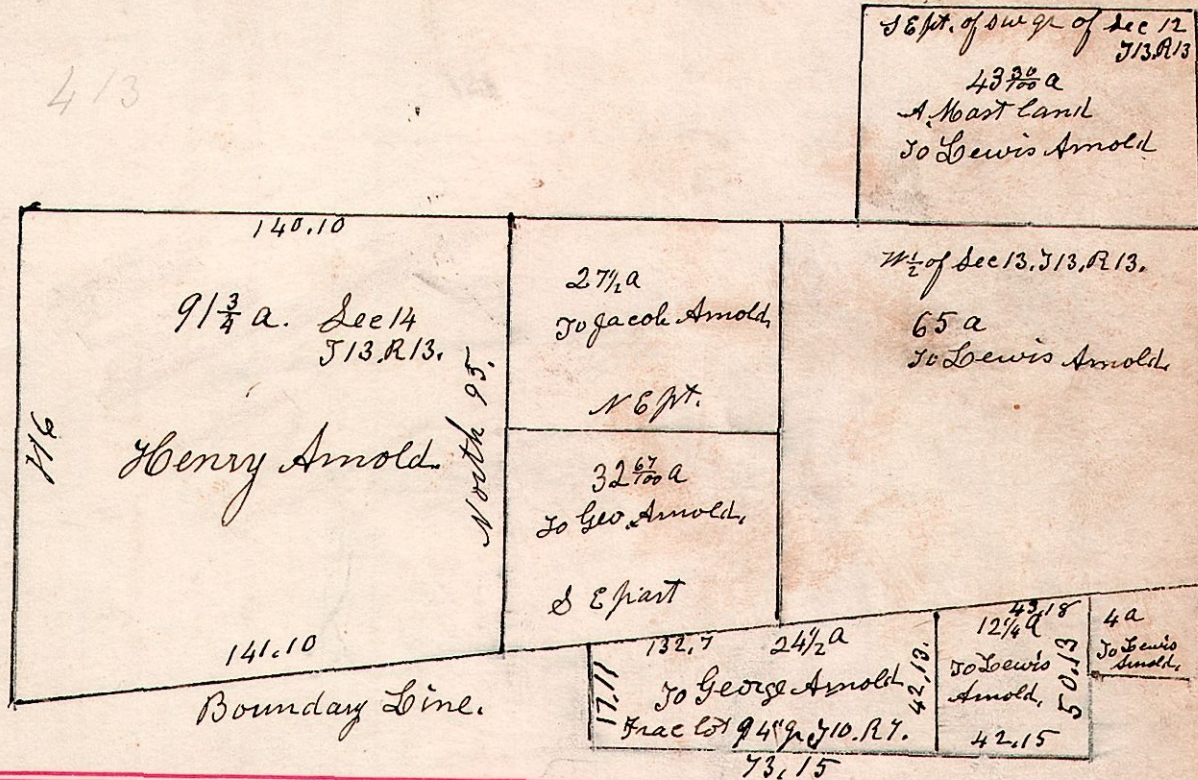
Beech 9 N 80 W 10.  
Maple 15 S 74 E 26. W. Oak 34 S 73 W 11.  
Beech 9 N 62 E 11. Dogwood 7 N 39 E, -  
So. N 79 W 10

#	Stone	11	the corner	#	B. Walnut	20	N 21 E	37
"	Beech	8	S 39 E	14	W. Walnut	12	S 61 W	13
"	Dogwood	6	S 82 W	11	Hickory	13	S 12 E	7
"	Do	5	S 54 E	22	Do	13	S 25 W	7
"	Do	5	N 54 W	17				

Chain Carriers.  
Thomas Hanna  
James Knox

13.13.13<sup>12</sup>  
14

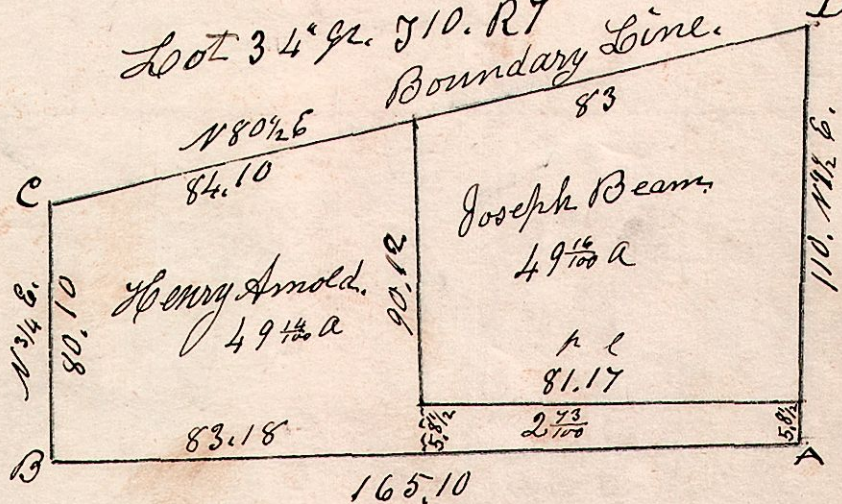
Nov 6<sup>th</sup> 1867.



7.10.3.4<sup>gr</sup>

June 28<sup>th</sup> 1861

Lot 3 4<sup>gr</sup> T10, R7  
Boundary Line.



Stone at the corners, with glass under the same,  
Except the 2 west corners of Lot 3.

- B. W. Oak 24 South 5.
- " Do 24 East 4.
- A Beech 16 S 45 E 6.
- " Maple 12 N 60 W 5.
- C Sugar 14 N 16 W 17.
- " W. Oak 18 S 40 W 30.
- D. W. Oak 18 S 2 E 19.
- " Dogwood 6 N 28 E 31.