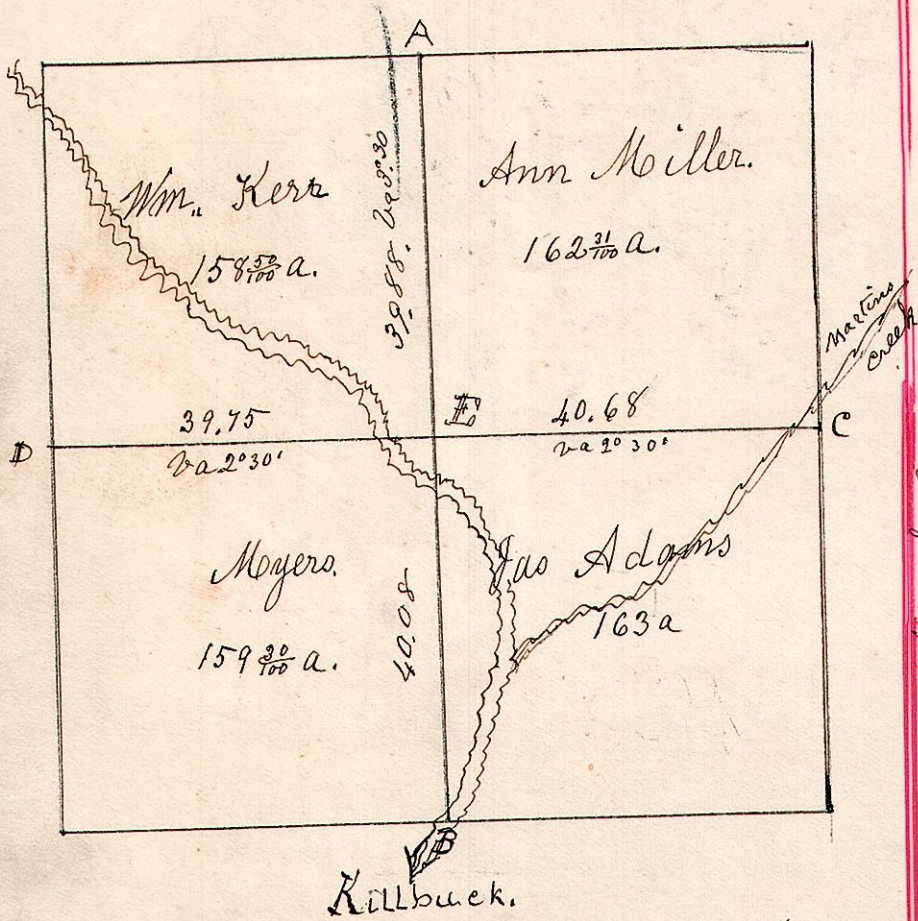


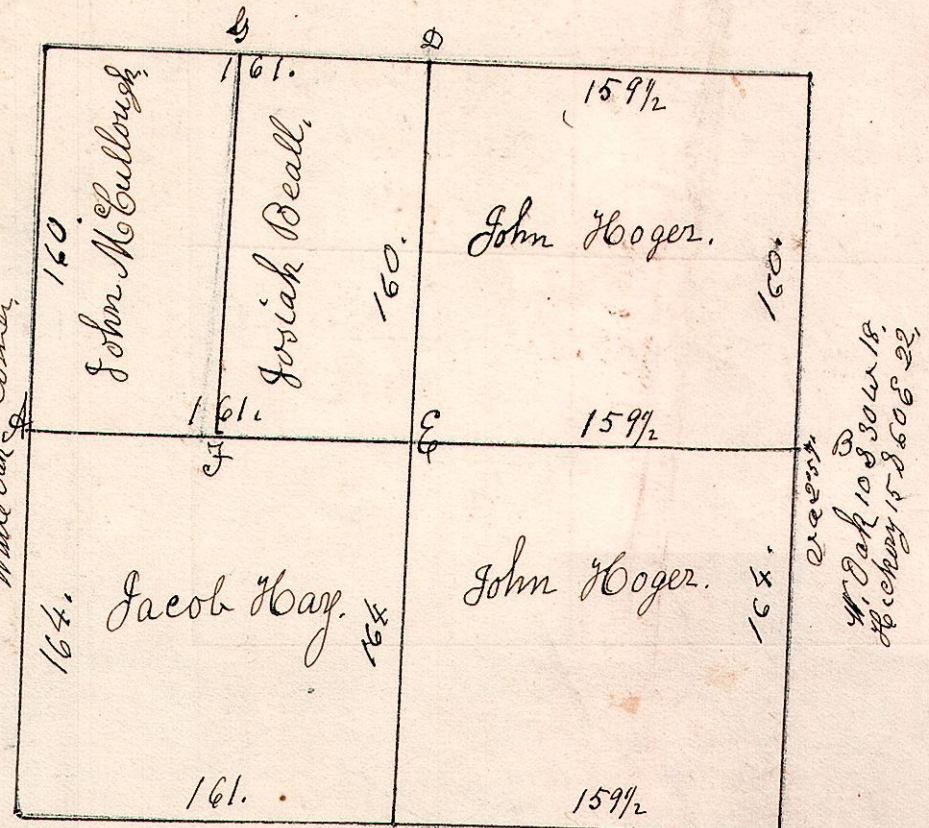
13.13.10

S 10. T_p 13. Range 13.



A Sugar 15 S 5 1/2 E 182
 " Plum 15 N 8 1/2 W 65
 B In Killbuck Creek
 C Sycamore 30 the Corner.
 D W. Oak 10 S 30 W 18
 " Hickory 15 S 60 E 22
 E S. Oak 6 N 53 1/2 E 38
 " W. Walnut 6 S 49 W 18
 Surveyed the above May 15th 1826,
 Being Section No 10. in Township 13 of Range
 13. of which the above is a correct plat of the same.
 Samuel Robinson Co Surveyor
 N.B. the gr post at A, stands 1 chain west of Centre.

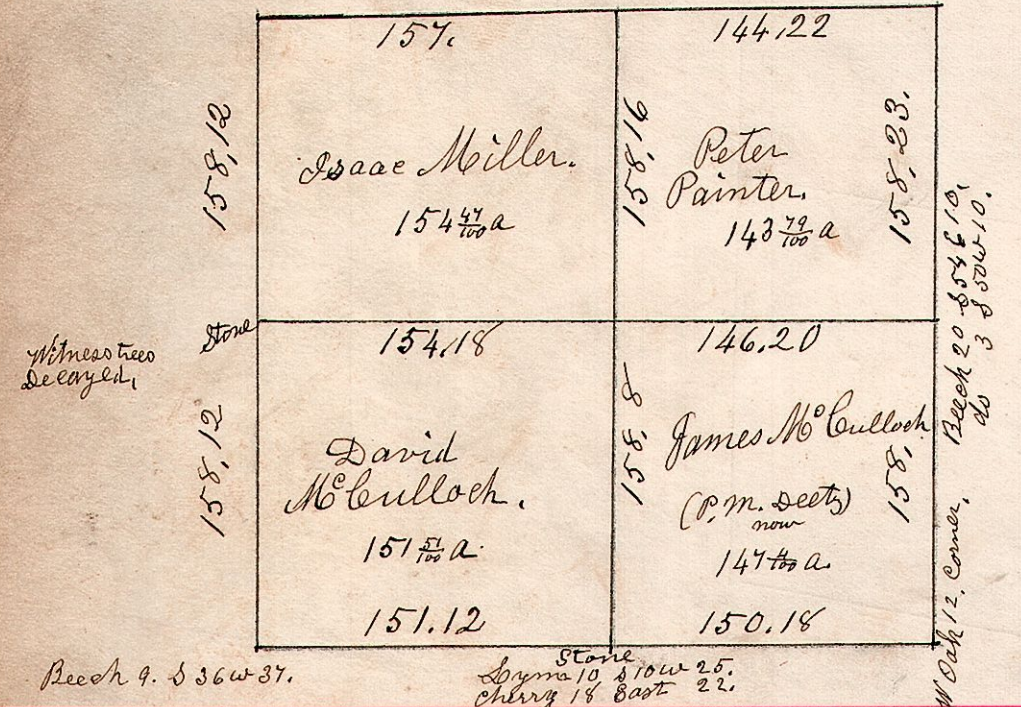
13.13.9. February 26th 1826. Divided Section 9
 in Township 13. of Range 13.
 as specified in draft.



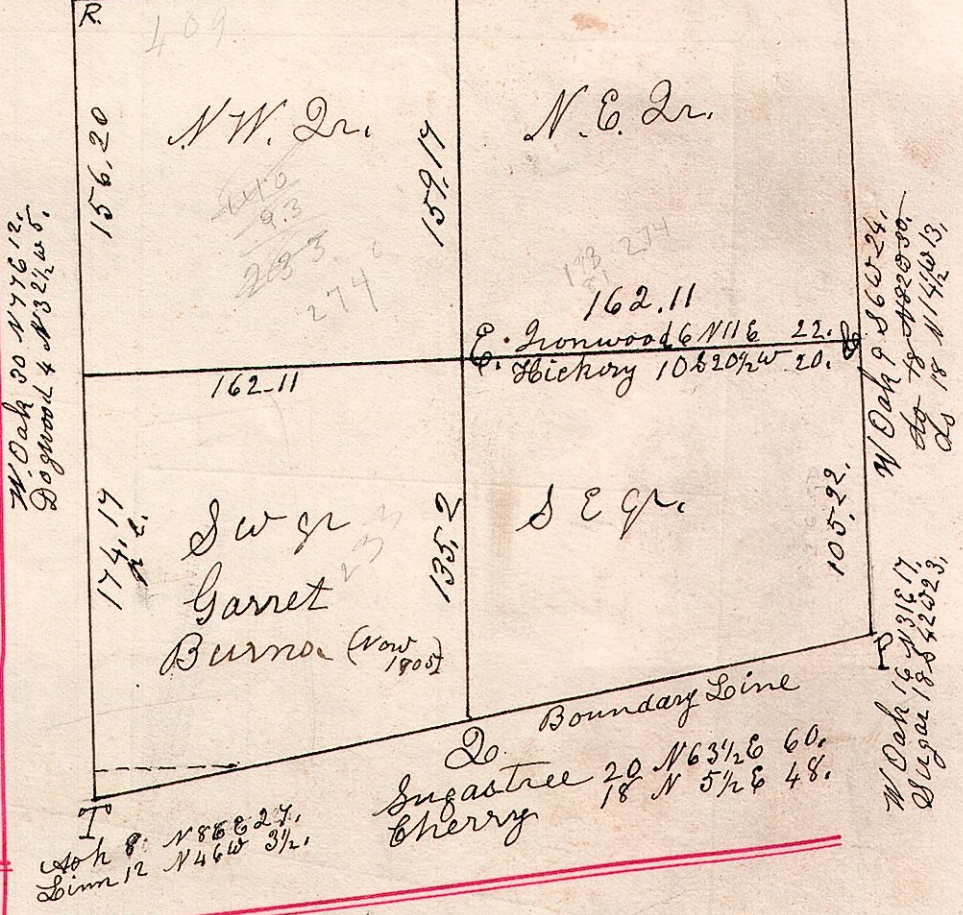
C W. Oak 20 S 82 W 32
 " do 23 East 42
 D W. Oak 20 N 12 1/2 E 30
 " do 10 S 53 W 15
 E W. Oak 18 N 54 E 30
 " do 20 S 65 E 24
 F W. Oak 3 S 51 W 65
 " W. Oak 20 N 2 W 63
 G W. Oak 22 N 6 E 25
 " do 9 S 72 W 24

13.13.1. April 25th 1866.
 Section 1. T_p 13. R 13.

Beech 9 N 80 W 10. W. Oak 30. S 73 W 11. Dogwood 7 N 39 E 18.
 Maple 15 S 74 E 24. Beech 9. N 62 E 11 do 6 N 99 W 16.



13.13.18. March 15th 1826. S 18. T_p 13. R 13. N 18 W 37.
 W. Oak 25 S 83 3/4 W 34. R. Oak 36 S 8 1/2 W 28. W. Oak 24 N 18 W 37.
 do 18 S 65 E 37. W. Oak 20 N 4 1/2 E 35. Ironwood 5 S 5 E 33.



13.13.3. Npt. S W q. S 3. T_p 13. R 13.
 April 8th 1840.

