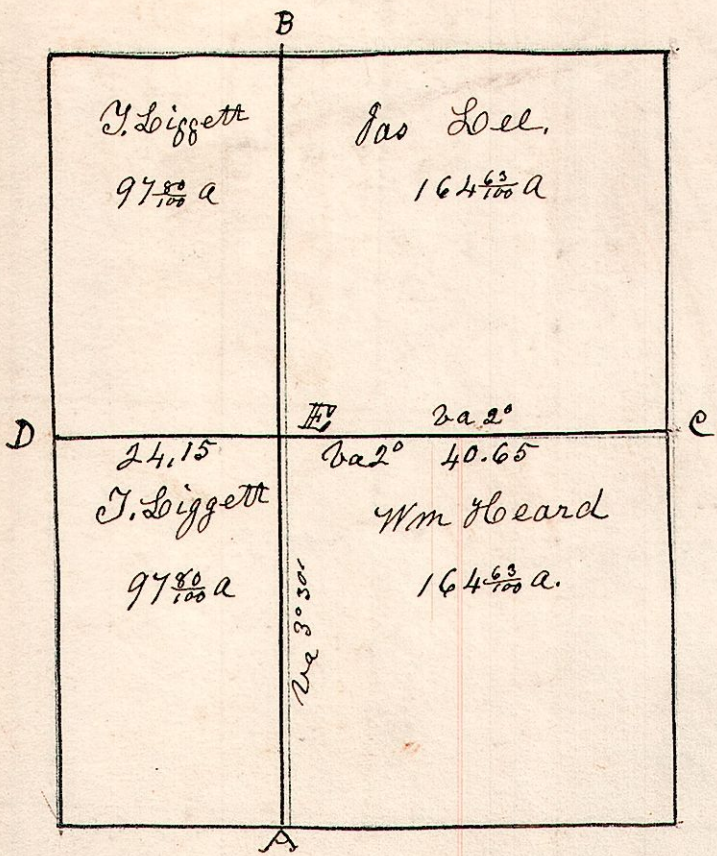


Section 6, T 17, R 14.

14.17.6.



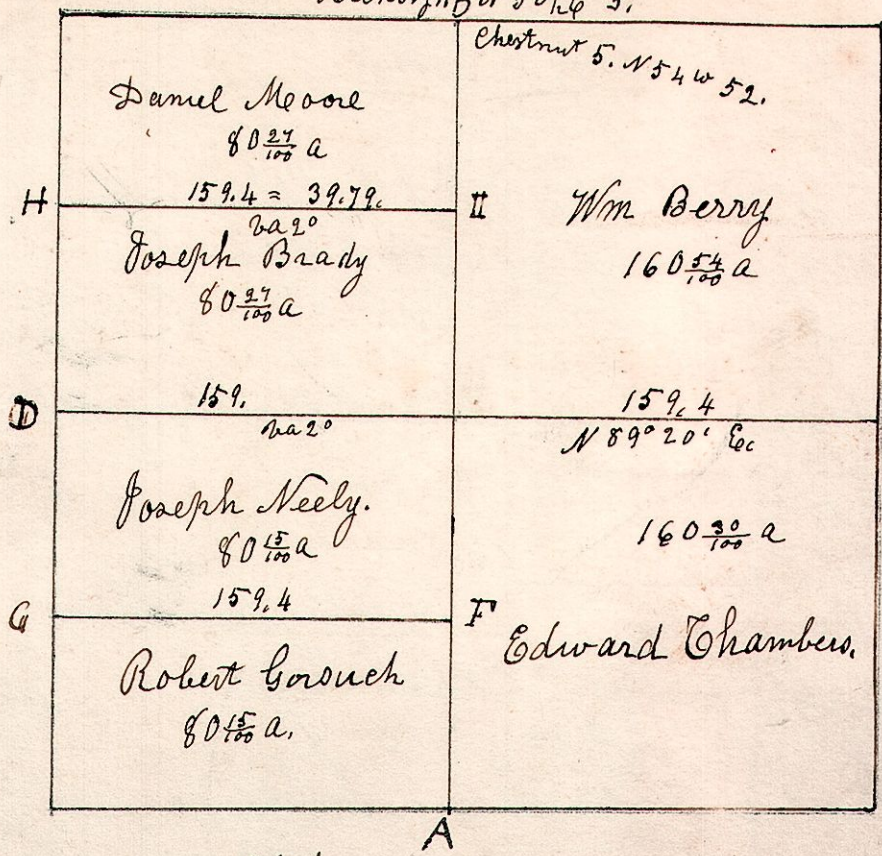
A	B. Oak	24	N 12 E	11
"	W. Oak	14	S 15 E	36
B	W. Oak	15	S 26 E	40
"	B. Oak	5	N 15 W	50
C	W. Oak	8	N 5 1/2 W	18
"	B. Oak	20	N 51 E	9
D	S. W. Oak	10	N 66 W	6 1/2
"	do	18	N 25 1/2 E	30
E	R. Oak	9	S 44 1/2 E	13 1/2
"	W. Oak	6	S 72 E	29 1/2

Surveyed the above November 21st 1826, being Section 6 in Township 17, of Range 14, of which the above is a correct plat of the same.

Samuel Robinson (Surveyor)

14.17.11. April 11th 1832 Surveyed Section 11 T 17 R 14. in the following manner &c.

W. Oak 40 S 80 W 37.
Hickory 11 B N 50 1/2 E 5.



W. Oak 15 N 60 E 115
B. Oak 5 S 52 E 11
B. Oak 8 S 49 E 20.

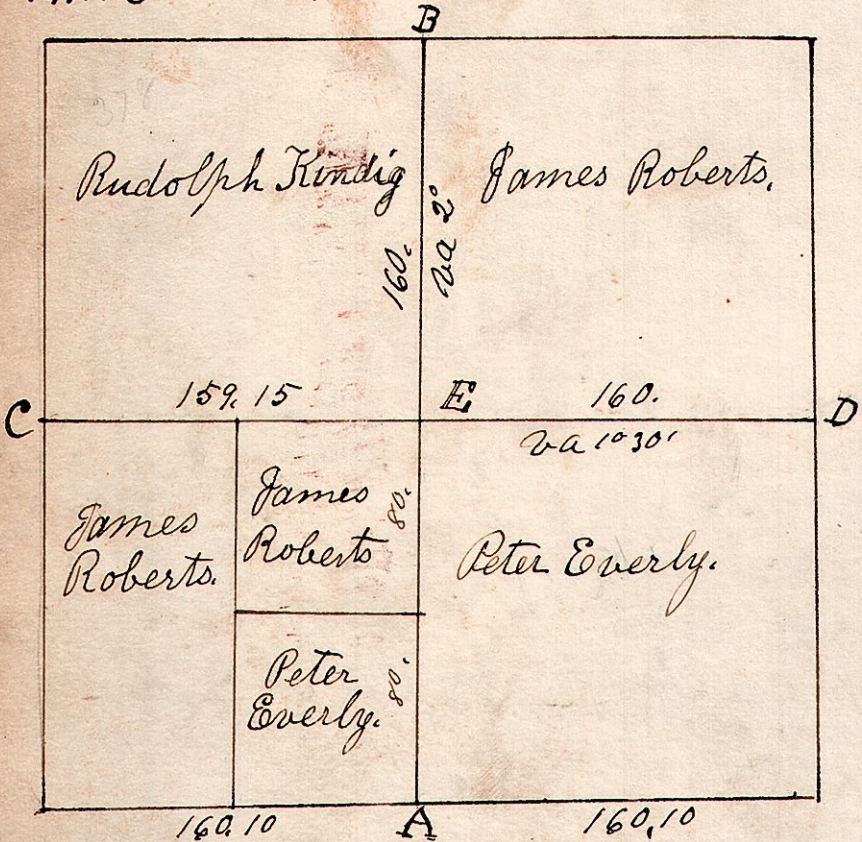
R. Oak 16 S 77 W 11.
B. Walnut 8 S 58 E 17.

Hickory 26 N 33 W 2.
do 9 S 3 1/2 W 26.

E	Stone	9"	Road.
F	B. Oak	18	N 76 E 67
G	Gum	8	N 53 E 11
"	Logwood	7	S 15 E 10
H	Gum	18	N 2 W 30
"	W. Oak	20	S 57 E 33
I	Stone	12"	Corner.

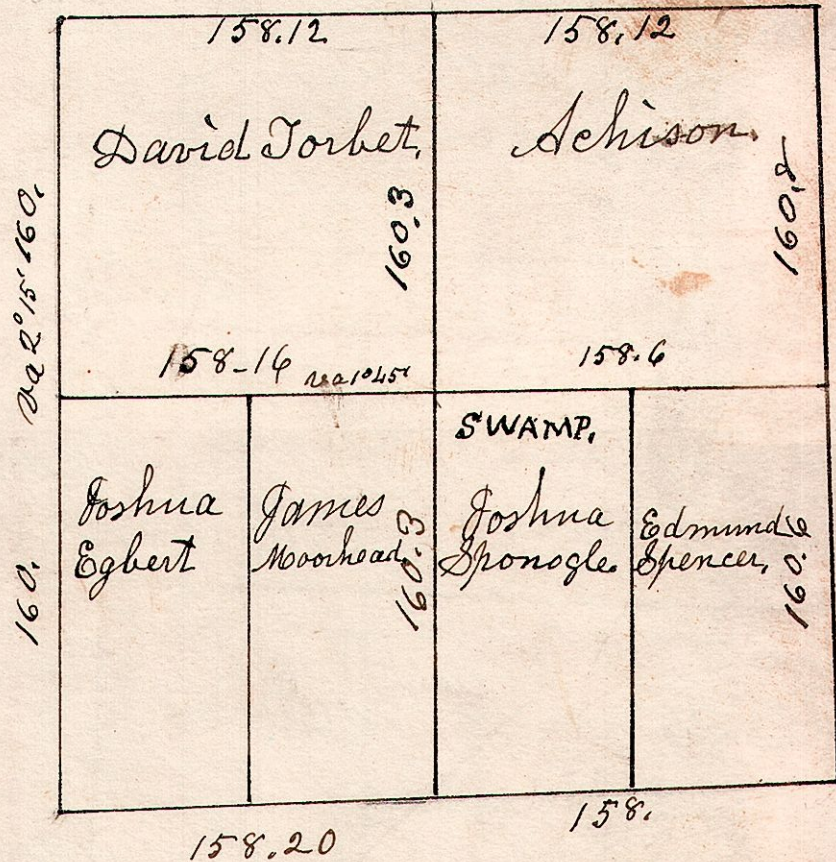
Joseph Neely Applicant, and to plant stone at each corner.

14.17.3 Feb. 21st 1837. S 3, T 17, R 14.



Stones to be planted at each corner of this Section by Peter Everly Applicant.

14.17.2. Feb. 3rd 1837. S 2, in T 17 of R 14.



The applicant, J. Egbert agrees to plant a stone at each corner 12 inches in diameter.