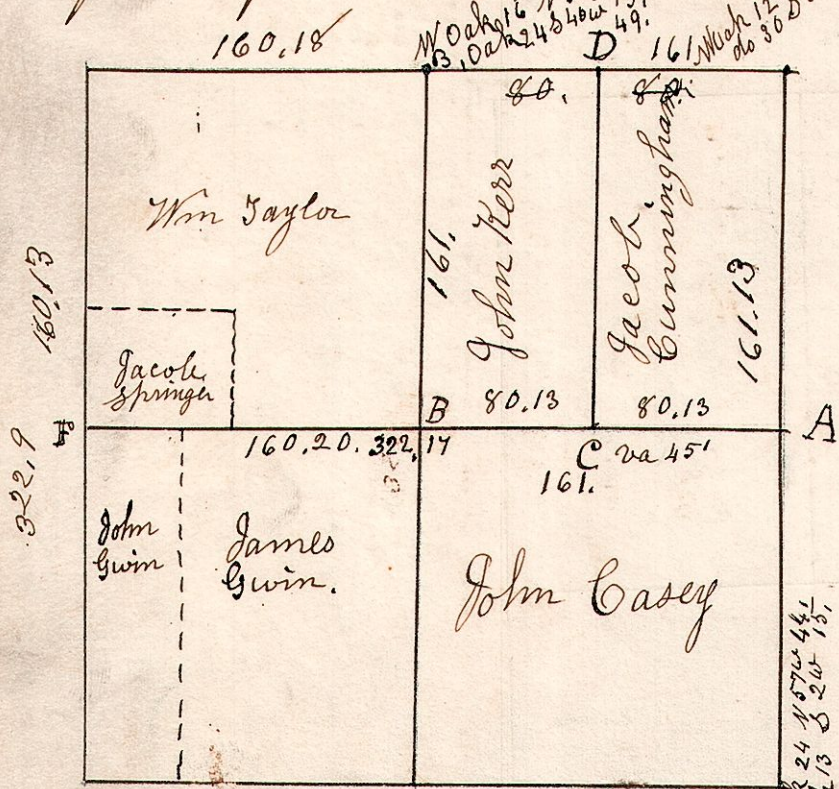
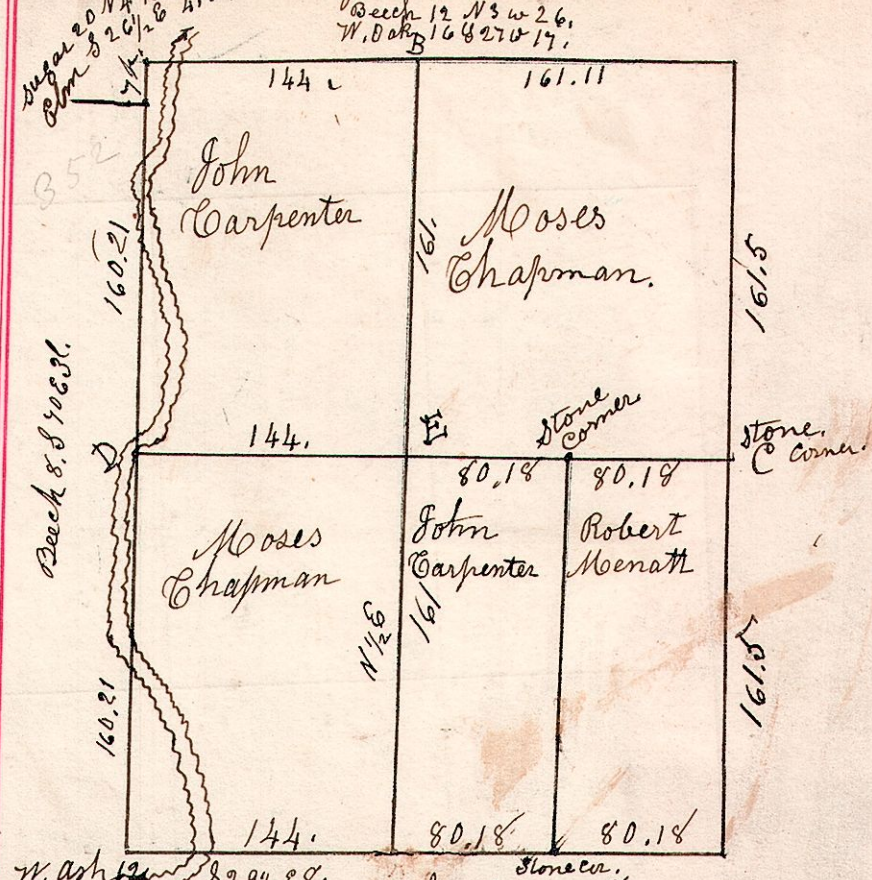


7.8.23. January 30th 1829 Surveyed the east half of Sec 23.58. R7. in the following manner and for the following persons



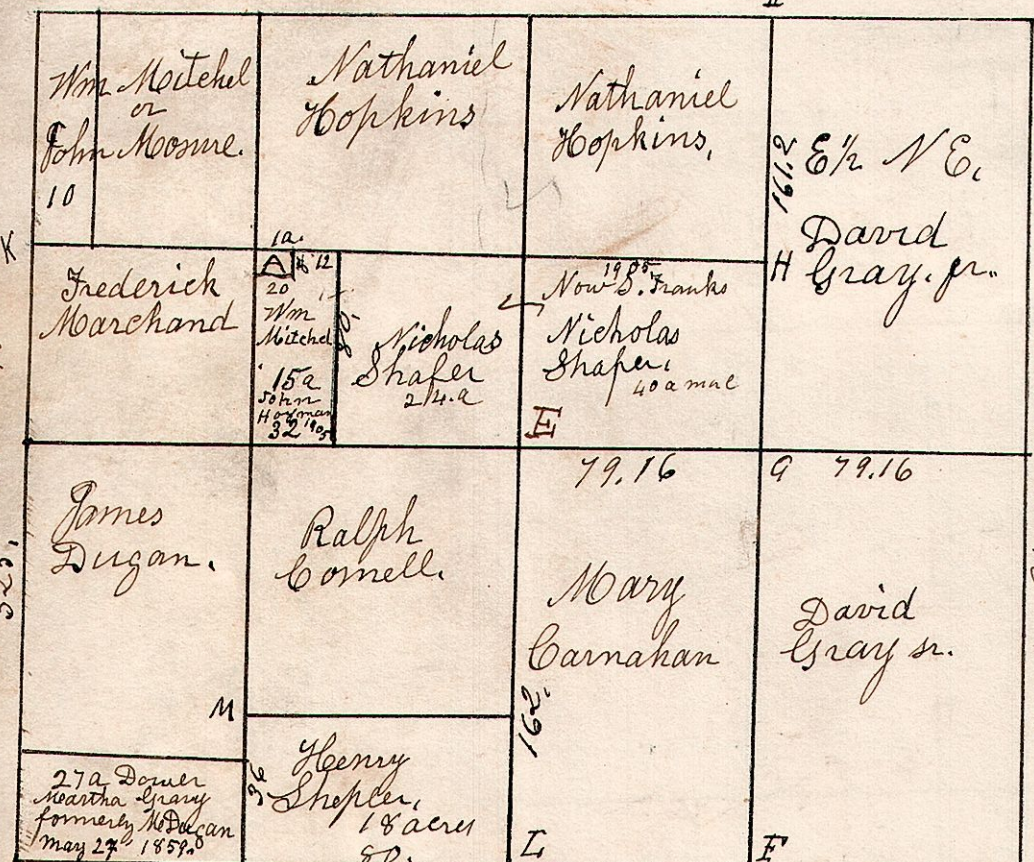
E Sugar 12 S 16 W 27.
 W Oak 40 N 38 W 40.
 B Sugar 18 S 82 W 33.
 Chestnut 20 N 49 W 48.
 Beech 24 N 14 W 14. 161.
 do 13 S 56 E 38.
 C.W. Oak 18 N 69 W 8.
 " do 28 N 81 E 33.
 W Oak 24 N 57 W 44.
 Beech 15 S 20 W 15.

7.8.15. August 21st 1841. Surveyed Sec 15.58. R7.



Sugar 20 N 49 W 41.
 Beech 20 N 26 W 26.
 Beech 12 N 3 W 26.
 W Oak 16 S 16 E 17.
 W Oak 14 S 32 1/2 E 8.
 Beech 10 N 23 W 17.
 Killbuck.
 E. Stone 9" the corner.

7.8.9. December 28th 1838. Sec 9.58. R7.
 M. Oak 36 S 67 W 6.
 do 30 East 20.
 B. Oak 20 S 47 W 23.
 W. Oak 12 S 49 E 19.
 Maple 14 N 74 W 22.
 do 16 N 65 E 11.

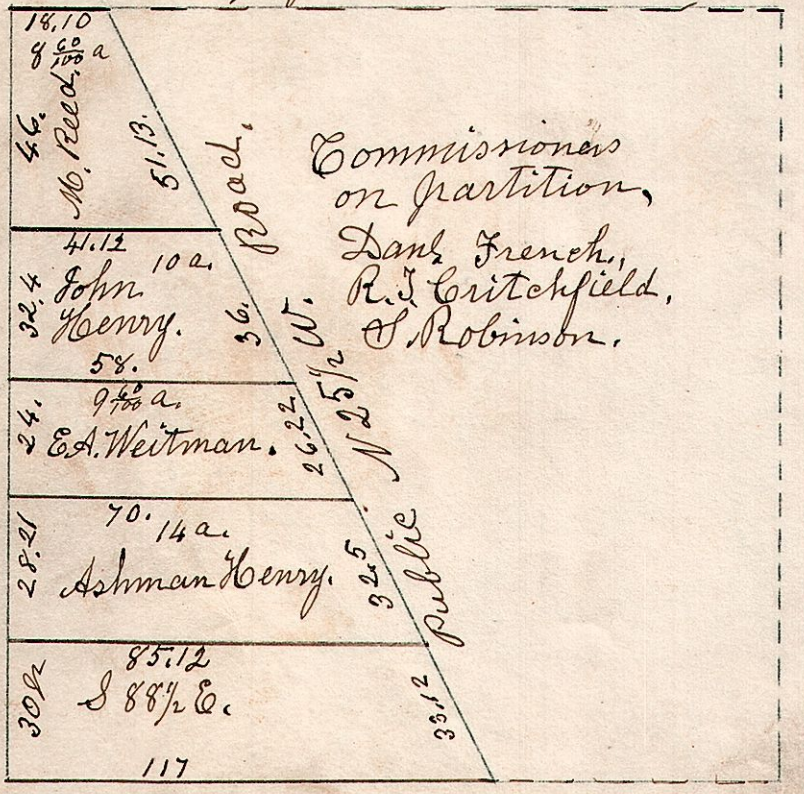


W Oak 15 S 43 W 12 1/2.
 Hickory 18 N 66 E 31.
 do 18 N 66 E 31.
 A. 1st ac.

F	Gum	15	S 80 W	26
"	do	10	N 60 E	24
G	Hickory	15	S 5 E	9
H	B. Oak	6	S 63 W	34
"	Poplar	8	N 53 W	43
I	Dogwood	6	S 48 E	9
"	B. Oak	3	North	7
K	Hickory	16	N 63 W	21
"	do	15	N 43 E	25
L	Sassafras	4	S 82 W	15
"	do	4	N 7 E	17
M	B Oak	5	S 69 E	16
"	do	3	S 46 W	5
N	Hickory	8	East	2
E.	W.O.	2.	S 61 W	34
"	Stone	10	The corner.	

B. Oak 16 S 64 E 28. D
 Chestnut 18 N 64 W 40.
 W. Oak N 85 E 41.
 do S 69 W 42.
 Hickory 28 S 55 E 5.
 Maple 12 S 50 W 22.

7.9.20. Oct 17. 1867. N.W. q of Sec 20.59. R7.



7.9.21. Surveyed 29 1/2 a piece for Wm Skelly May 6th 1868.

