

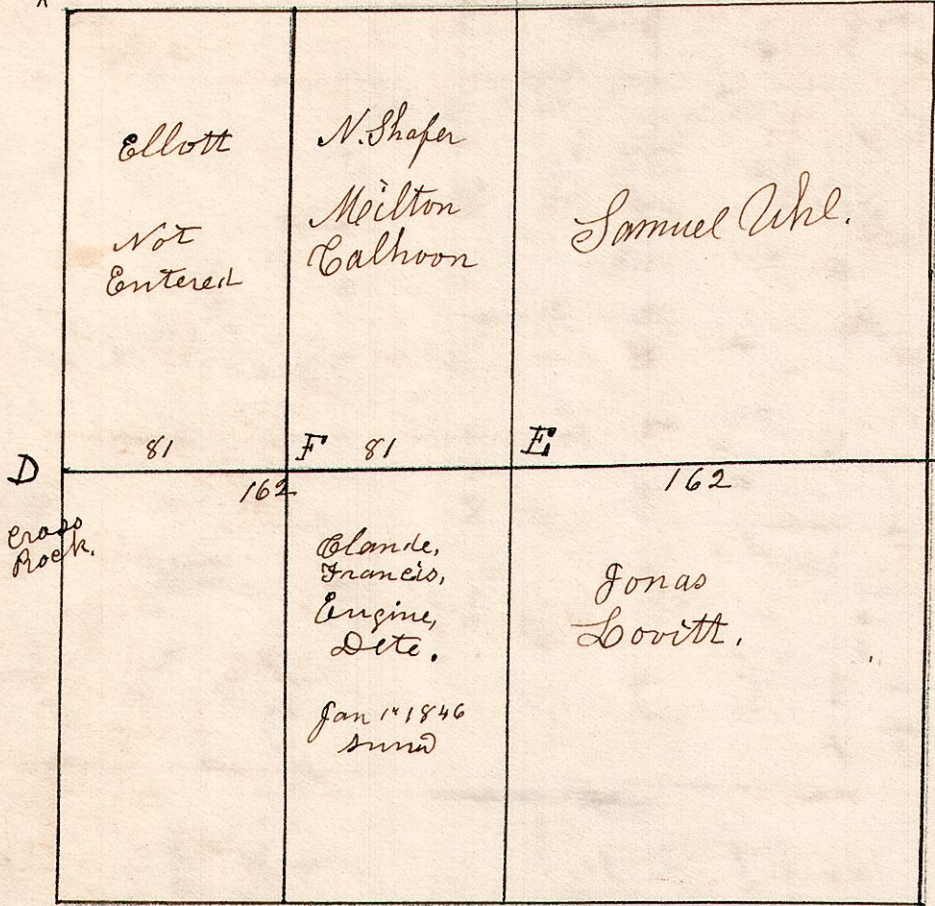
November 22 1830. Surveyed Section 20. T8. R7. in the following manner and for the following persons.

7.8.20

W. Oak 14 S 23 W 12.
do 8 70 1/2 W 22

W. Oak 30 West 6.
do 18 S 6 1/2 E 30.

Hickory 14 N 41 W 36.
W. Oak 30 S 46 1/2 W 37.



W. Oak 14 S 66 E 28.
do 12 N 71 E 29.

Ironwood 8 N 47 E 15.
Sogwood 4 S 15 W 11.

E	Beech	14	S 40 E	11
"	W. Oak	14	N 4 E	13
F	Cherry	8	S 14 E	15
"	Elm	10	N 45 W	29
G	W. Oak	20	N 13 E	7
"	Hickory	10	N 73 E	11

G. S 86 1/2 E. 81 p from K.
By G. S. Cole July 12 1897.

W. Oak 12 West 18.
do 30 N 80 E 37

W. Oak 10 S 67 W 10.
do 24 N 7 E 25.

Elm 20 N 46 E 7.
do 40 N 60 W 41.

7.8.1.

December 20 1837. Surveyed Sec 1. T8. R7. in the following manner for the following persons.

Sugar 16 S 20 W 40.
Elm 10 S 81 W 44.
Sugar 16 S 77 E 9.

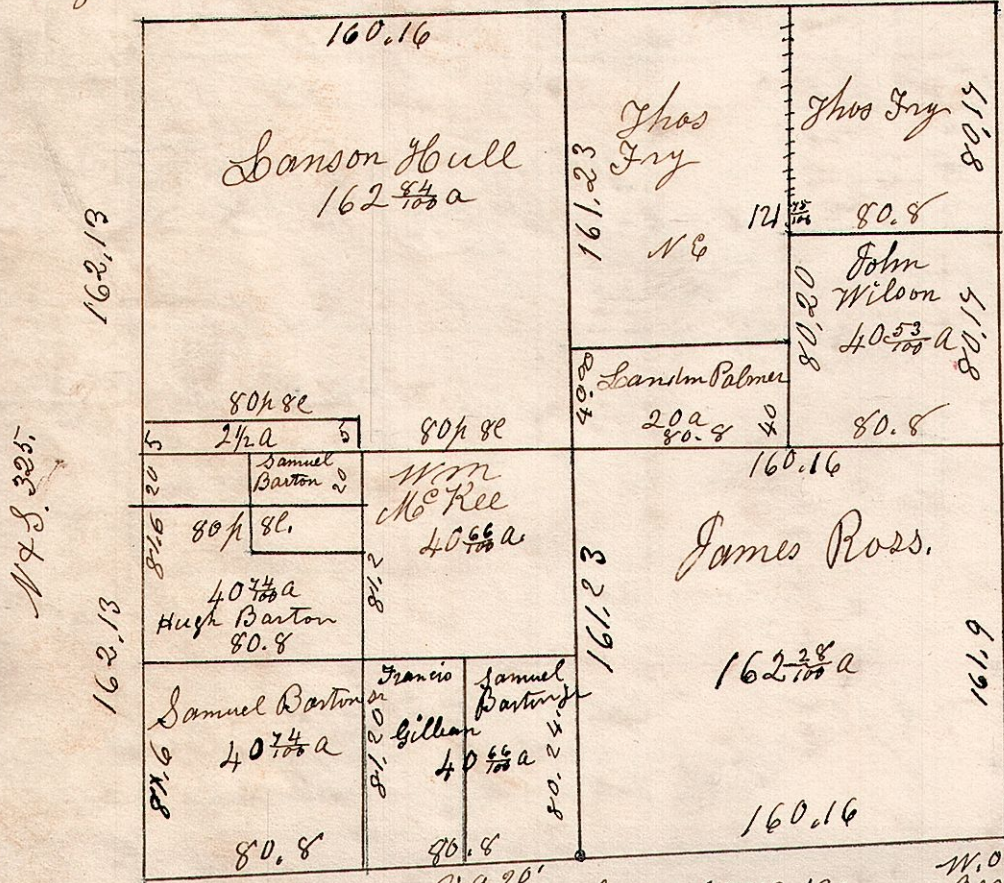
W. Oak 24 S 88 W 25.
do 30 N 18 E 29.

Dec 6 1832

Surveyed the 7.8.16. west half of Sec 16. in the following manner.

W. Oak 12 S 29 1/2 E 8.
Hickory 8 S 89 W 8.9

W. Oak 14 S 33 1/2 E 8.
Beech 10 N 23 W 17.



Beech 20 N 66 E 24.
do 14 S 63 E 31.
F. Maple 36 N 76 E 33.
W. Elm 36 S 73 E 36.

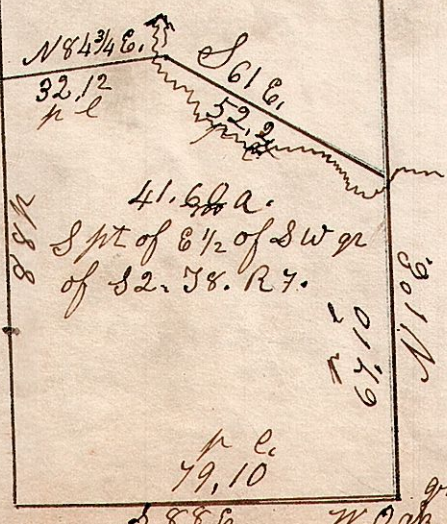
W. Oak 15 N 35 E -
do 14 S 57 -
Stone planted at each corner

Maple 14 N 74 1/2 W 22.
do 16 N 65 E 11.

W. Oak 20 S 71 1/2 E 12.
do 26 N 12 E 22.

7.8.2.

E 1/2 of SW qr. of Sec 2. T8. R7.

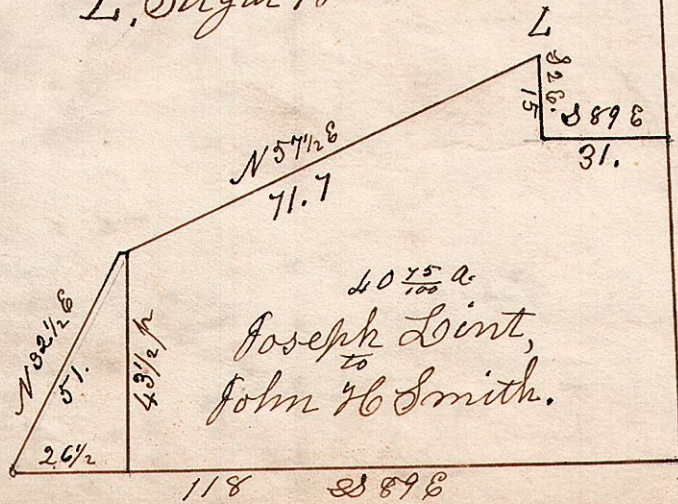


Surveyed for John Taylor, May 4 1863, N 10 E.

7.8.24.

March 1851. Part of the south west quarter of Sec 24. T8. R7.

L. Sugar 18 corner.



Maple 12 the corner
Beech 5 East 7.