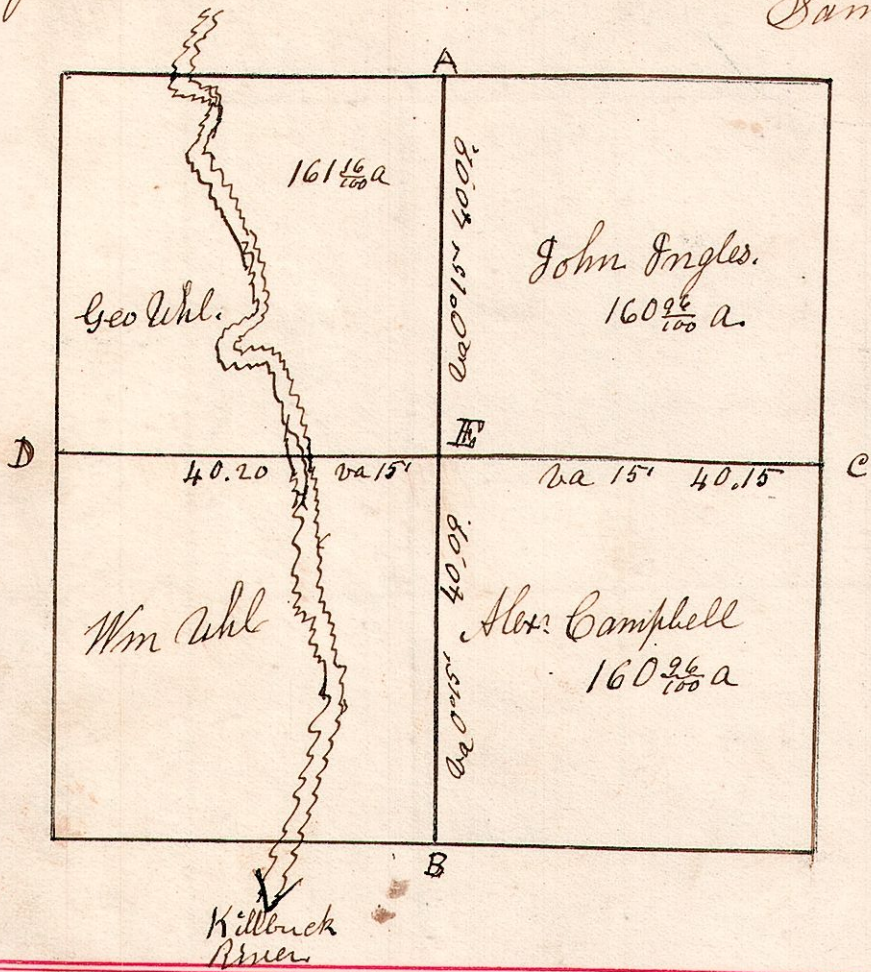


7.9.19.

Surveyed the above May 3rd 1826.
Being Section No. 19. in Township 9 of Range 7.
of which the above is a correct plat.

Samuel Robinson
Co Surveyor.



A	Beech	12	N 47 W	15
"	Elm	12	N 70 E	13
B	Beech	12	N 78 W	28
"	do	12	N 83 E	28
C	Sugar	18	N 3 W	15
"	Dogwood	6	N 7 E	25
D	Sugar	12	N 62 1/2 W	4
"	do	15	N 9 1/2 W	29
E	Elm	20	S 4 E	24
"	Hickory	14	N 73 E	23

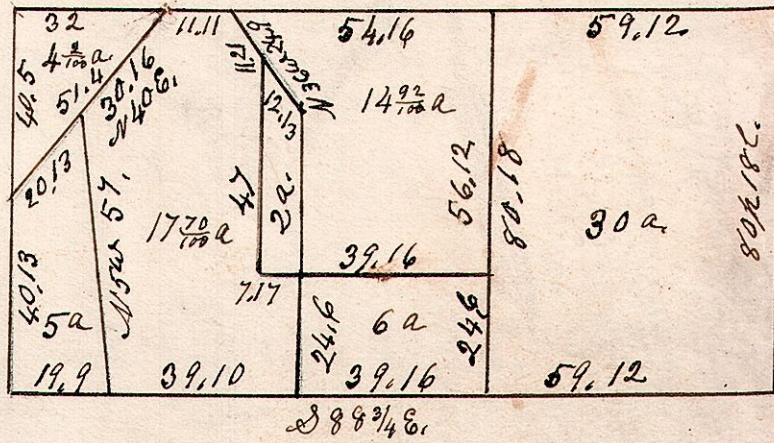
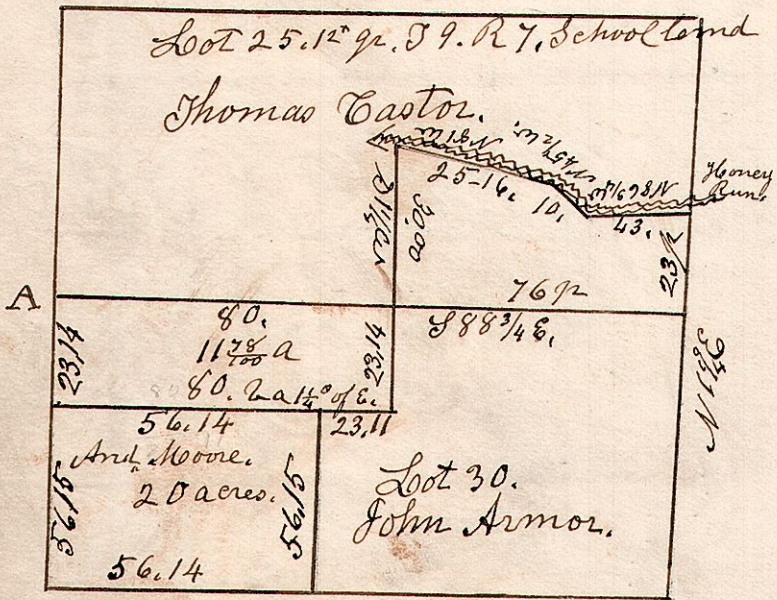
7.9.25th/₃₀ yr.

Lots 25th and 30th of 59. R 7.

7.9.29.

Lot 29 in 1st of 59. R 7. School Land.
Surveyed Sept 14th 1867 for
Joseph Adams.

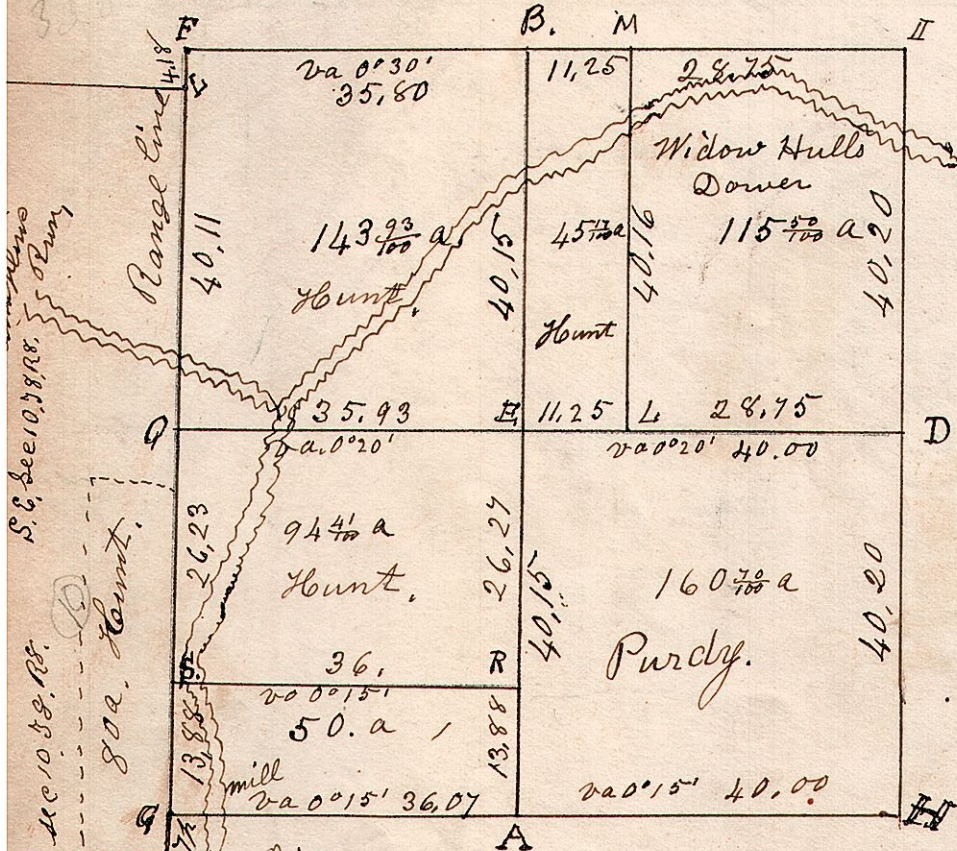
Beech 14 1/2 14 1/2 20 C.



Surveyed March 5th 1848.

7.8.6

Section 6, T 8, R 7.



A	W. Oak	16	S 24 W	17
B	Beech	12	N 3 W	26
"	Maple	8	S 25 W	8
"	Elm	14	N 62 E	22
C	Sugar	22	S 74 W	11
"	Beech	15	S 72 E	25
D	W. Oak	20	S 27 W	25
"	Chestnut	15	N 84 E	13
E	W. Oak	20	N 11 E	29
"	do	18	S 67 E	8
F	Beech	18	S 50 1/2 E	50
"	do	12	N 39 1/2 E	42
G	Sugar	20	N 49 1/2 W	30
"	Elm	15	S 36 1/2 E	21
H	Beech	18	S 23 W	40
I	Elm	12	S 27 W	8
"	Beech	14	S 11 W	22
L	W. Oak	13	N 74 W	11
M	Maple	8	S 40 E	7
"	Elm	8	S 42 W	7
R	W. Oak	8	N 50 W	18
"	Hickory	8	S 22 W	11
S	Porton Bank of Creek.			

Surveyed the above Nov. 21st 1828.
Being Section Six in Township No Eight, of Range No Seven,
of which the above is a correct plat of the same by
Course and distance.

Samuel Robinson
Surveyor of Holmes Co O.

S. E. Sec 10, 38, 39, 40, 41, 42, 43, 44, 45, 46, 47, 48, 49, 50, 51, 52, 53, 54, 55, 56, 57, 58, 59, 60, 61, 62, 63, 64, 65, 66, 67, 68, 69, 70, 71, 72, 73, 74, 75, 76, 77, 78, 79, 80, 81, 82, 83, 84, 85, 86, 87, 88, 89, 90, 91, 92, 93, 94, 95, 96, 97, 98, 99, 100.

107 70