

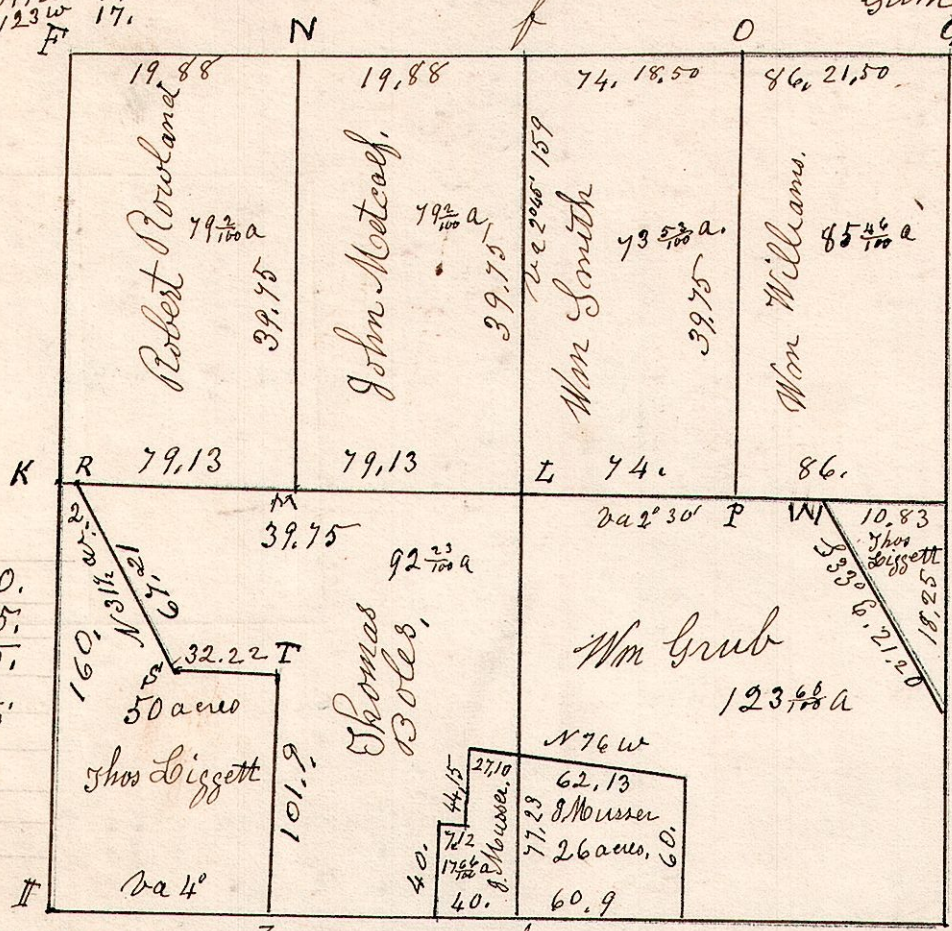
15.19.1.

November 22 1826. Surveyed Section 1. in Sp 15. R 15. in the following manner for the following persons.

B. oak 7 317w 14. do 5 N23W 17.

W. Oak 14 N59W 51. do 24 N77E 18.

B. Oak 8 N20W 133. Gum 14 S 32 W 216.



| | | | | |
|---|--------|----|-------------|--------|
| A | W. Oak | 15 | N 6 W | 10 |
| " | do | 14 | N 50 E | 31 |
| N | W. Oak | 24 | N 89 W | 25 |
| " | do | 15 | S 40 W | 32 1/2 |
| L | W. Oak | 40 | N 57 W | 7 1/2 |
| " | Gum | 18 | N 17 E | 4 1/2 |
| R | B. Oak | 4 | S 69 E | 21 |
| " | Maple | 6 | S 65 E | 34 1/2 |
| S | B. Oak | 18 | The corner. | |
| T | W. Oak | 24 | N 23 W | 34 |

Pine 10 S 17 W 14. do 12 N 23 W 17.

Z. W. Oak 40 N 25 W 60. " Hickory 9 N 1 E 65. O. W. Oak 40 N 28 W 5. Gum 12 N 87 E 12. P. W. Oak 13 N 19 E 9. Hickory 13 S 70 W 34.

W. Oak 18 N 46 E 19. do 10 S 32 W 17.

W. Oak 15 N 69 E 9. do 15 N 75 W 9.

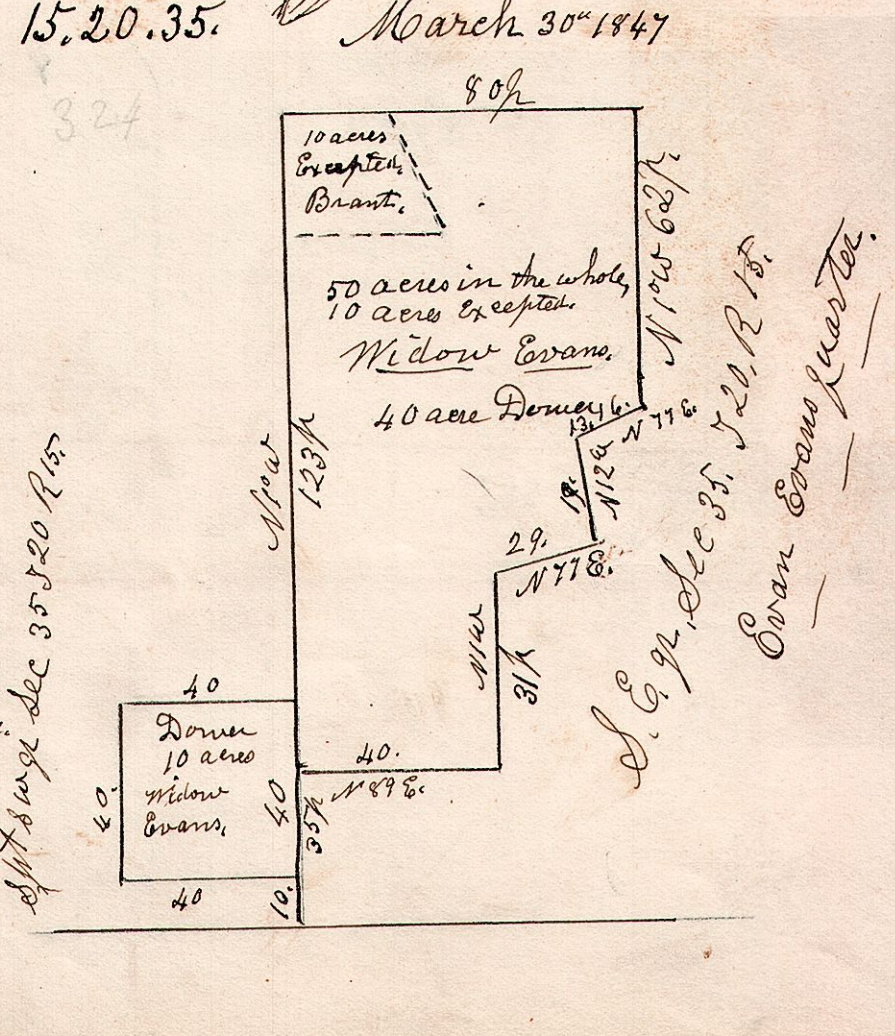
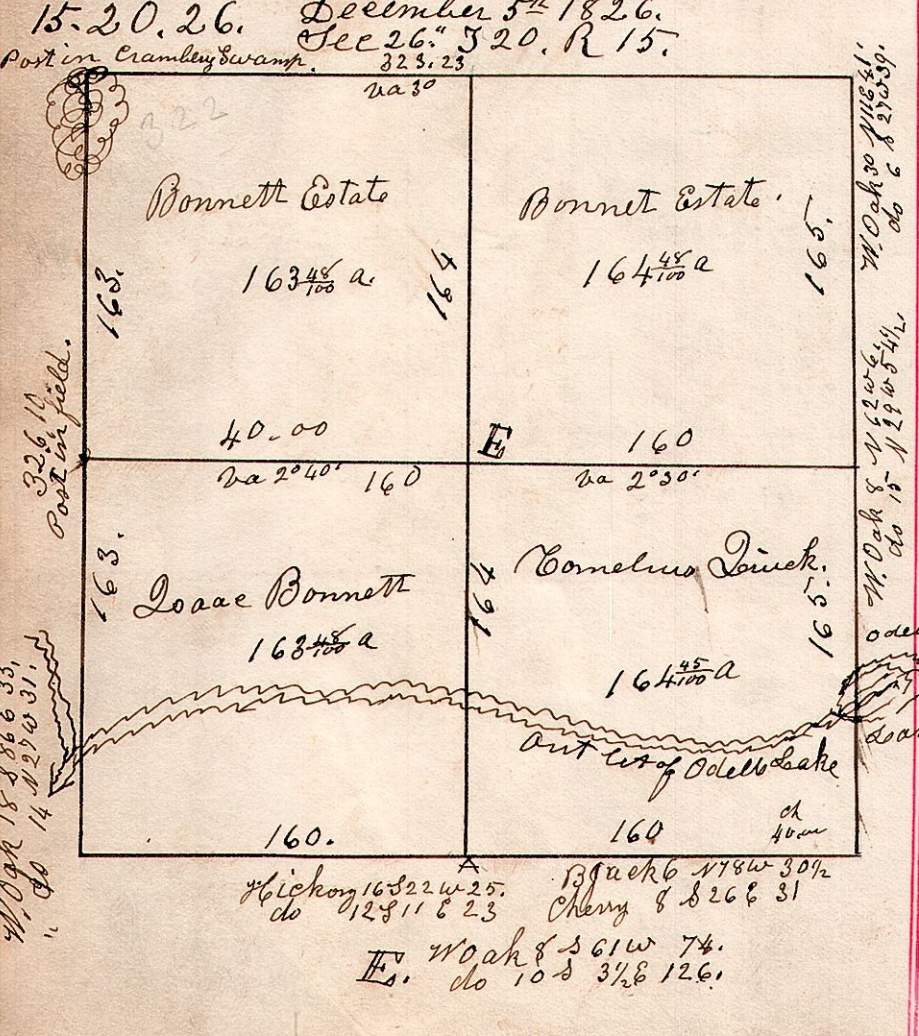
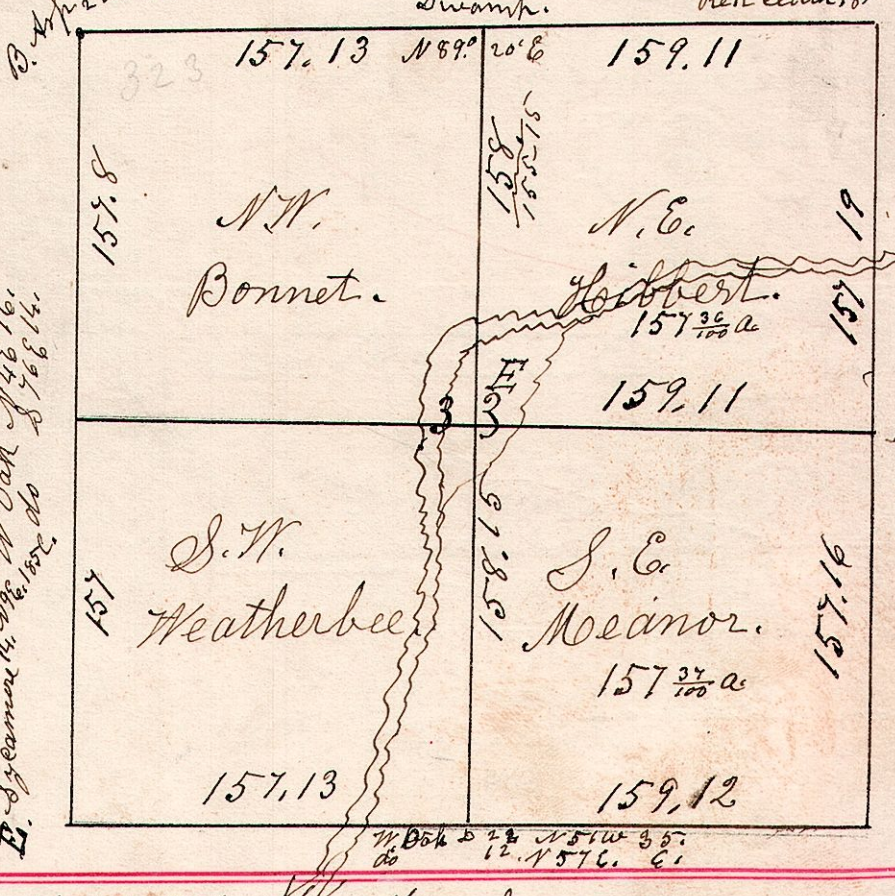
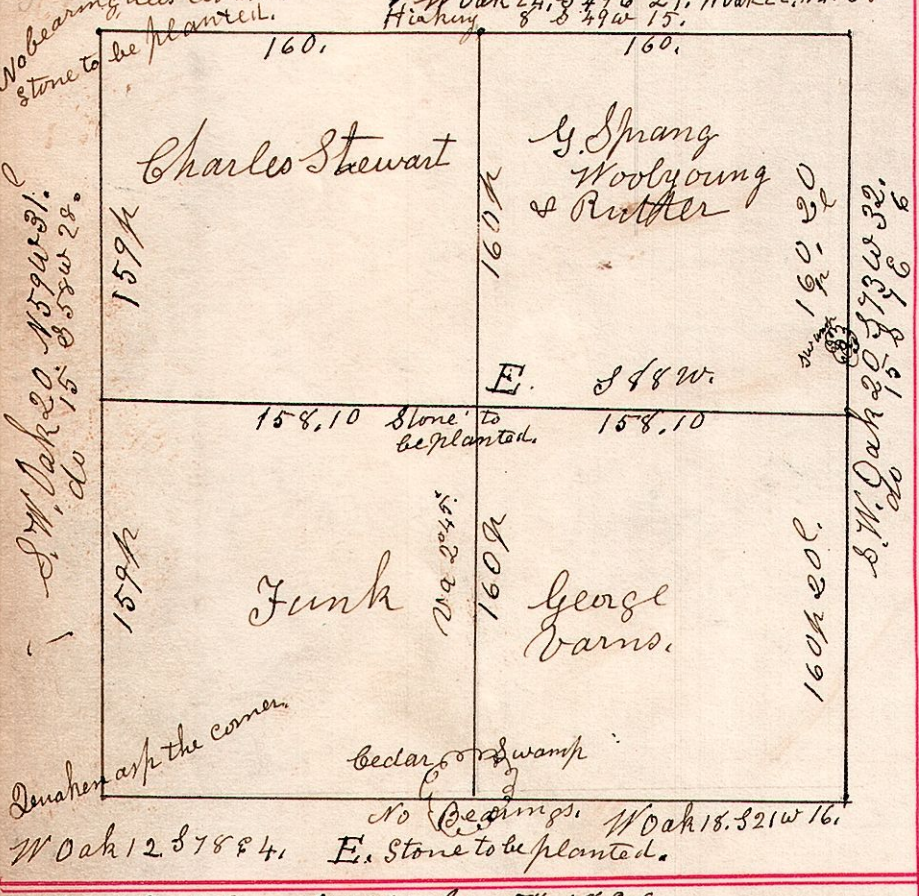
W. Oak 22 N 68 W 45. do

W. Oak 40 the corner.

W. Oak 36 N 45 E 39. Ironwood 6 N 73 W 34. W. Oak 28 N 46 W 22. do 15 N 28 W 40.

15.20.28. April 30 1833. See 28. S 20. R 15.

15.20.33. March 12 1872. Nov 8. 1825. Swamp. Rail cedar, S. Gum & N 60 W 221 E.



S.W. Oak 20 N 59 W 31. do 15 S 55 W 28.

S.W. Oak 14 N 76 W 16. do 14 S 76 E 14.

W. Oak 12 N 21 W 35. do 10 N 23 E 21. Center corner at 32. Sycamore 14. N 9 E 185 E.

W. Oak 18 S 86 E 33. do 14 N 27 W 31.

S.W. Oak 8 N 22 W 44. do 19 N 22 W 54. do 19 N 22 W 54. do 19 N 22 W 54.

S. E. 9. Dec 31. S 20. R 15. Evans Evans Quarter.