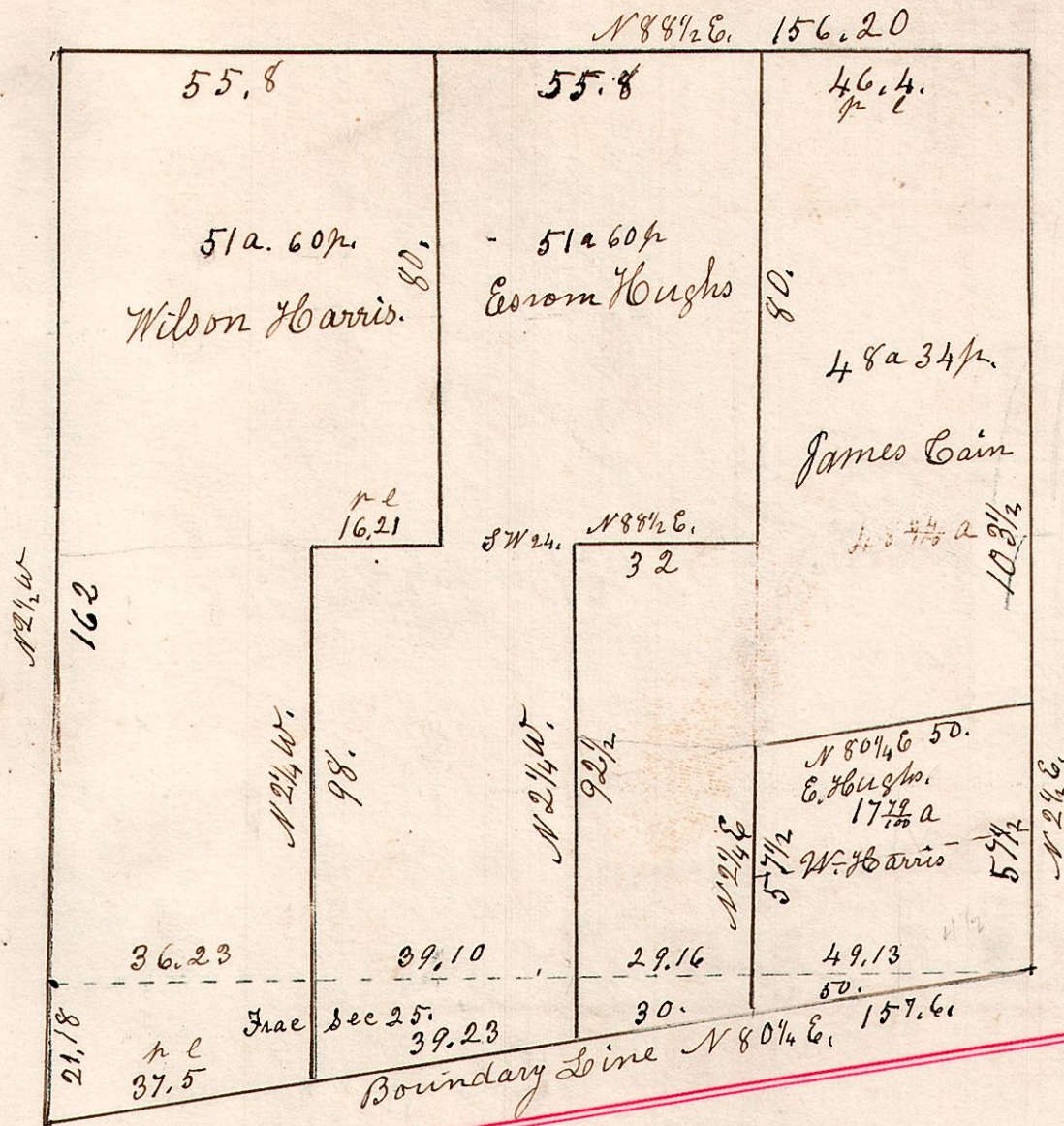


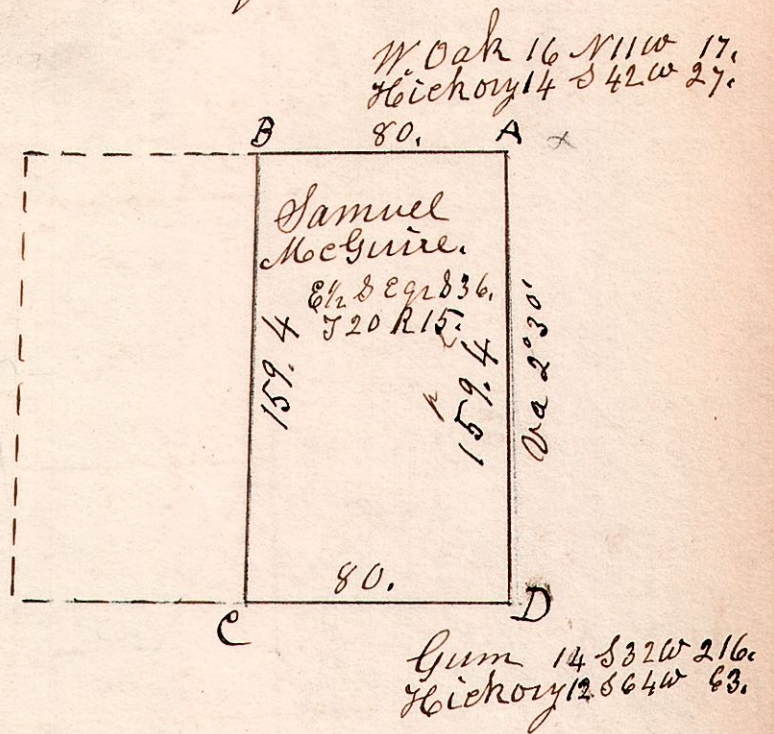
15.19.24. December 1st 1854.
S.W. q^r Sec 24. T19. R 15.

317



15.20.36 April 11th 1836.
Surveyed part of the south east q^r of
Sec 36. T20. R 15. Being the east half of the
above mentioned quarter section.

318

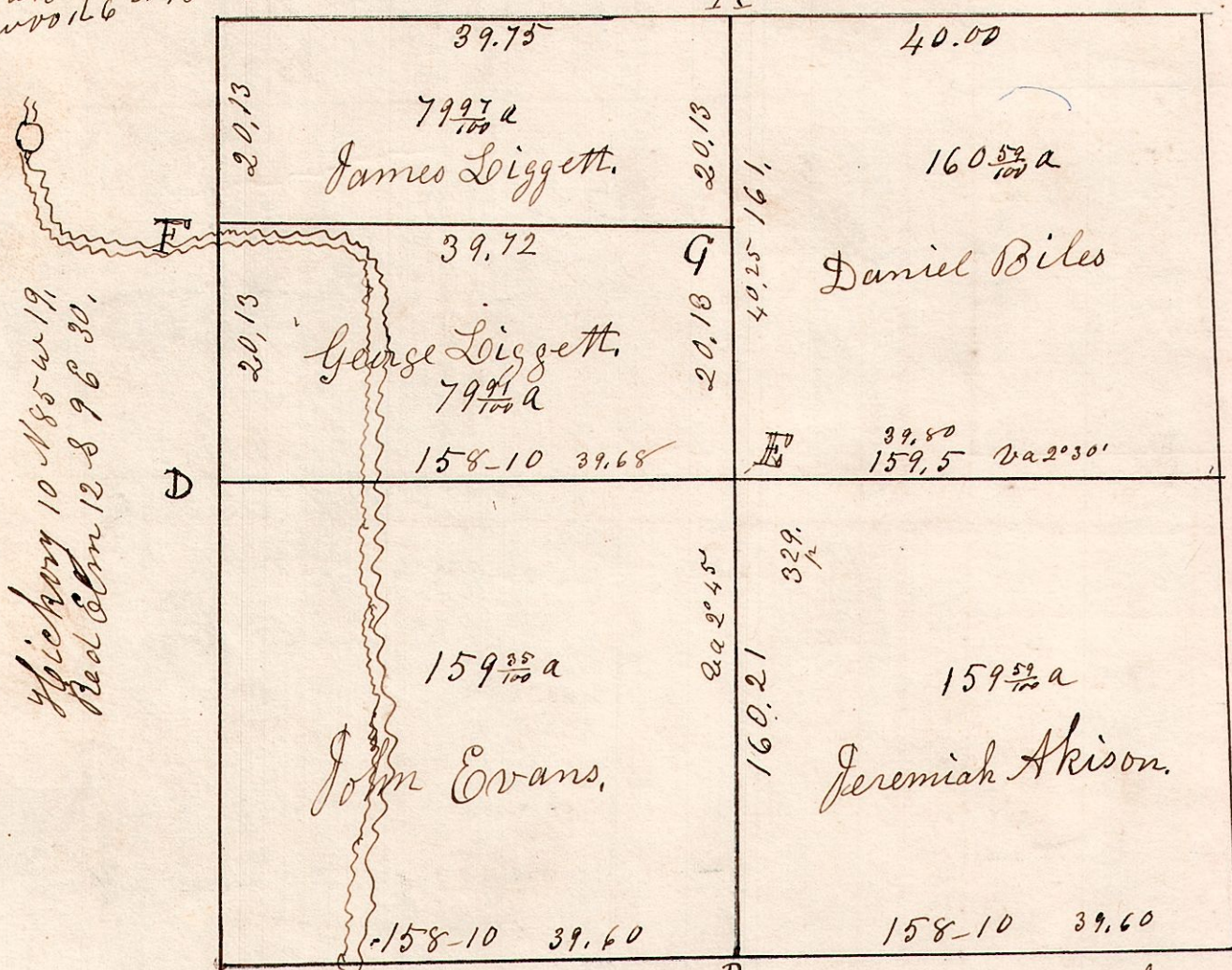


B. 12 B. Oak S 64 W 46.
do do N 25 E 24.
C. 16 W. Oak S 85 W 48.
do 11 Maple N 30 E 25.

15.19.12. December 7th 1826. Surveyed Section 12,
in T19. of Range 15. in the following manner.

319

W. Oak 36 N 45 E 39.
Donwood 16 N 73 W 34.
W. Oak 20 S 46 W 22.
do 15 N 28 W 40.
W. Oak 40. The corner



Hickory 10 N 85 W 19.
Red Elm 12 S 9 E 30.

B. Oak 13. S 45 W 20.
Hickory 14. N 83 E 6.

E	W. Oak	15	S 58 W	3 1/2
F	do	12	S 34 E	6
F	Elm	18	S 14 W	64
"	Cherry	8	N 65 W	82
G	B. Oak	15	West	45
"	W. Oak	20	S 65 E	34

W. Oak 20 N 77 E - 9.
W. Walnut 4 S 77 W - 20.

W. Oak 12 N 29 W 30.
do 16 S 66 E 50.

W. Oak 20 N 30 W 20.
do 26 S 2 W 19.