

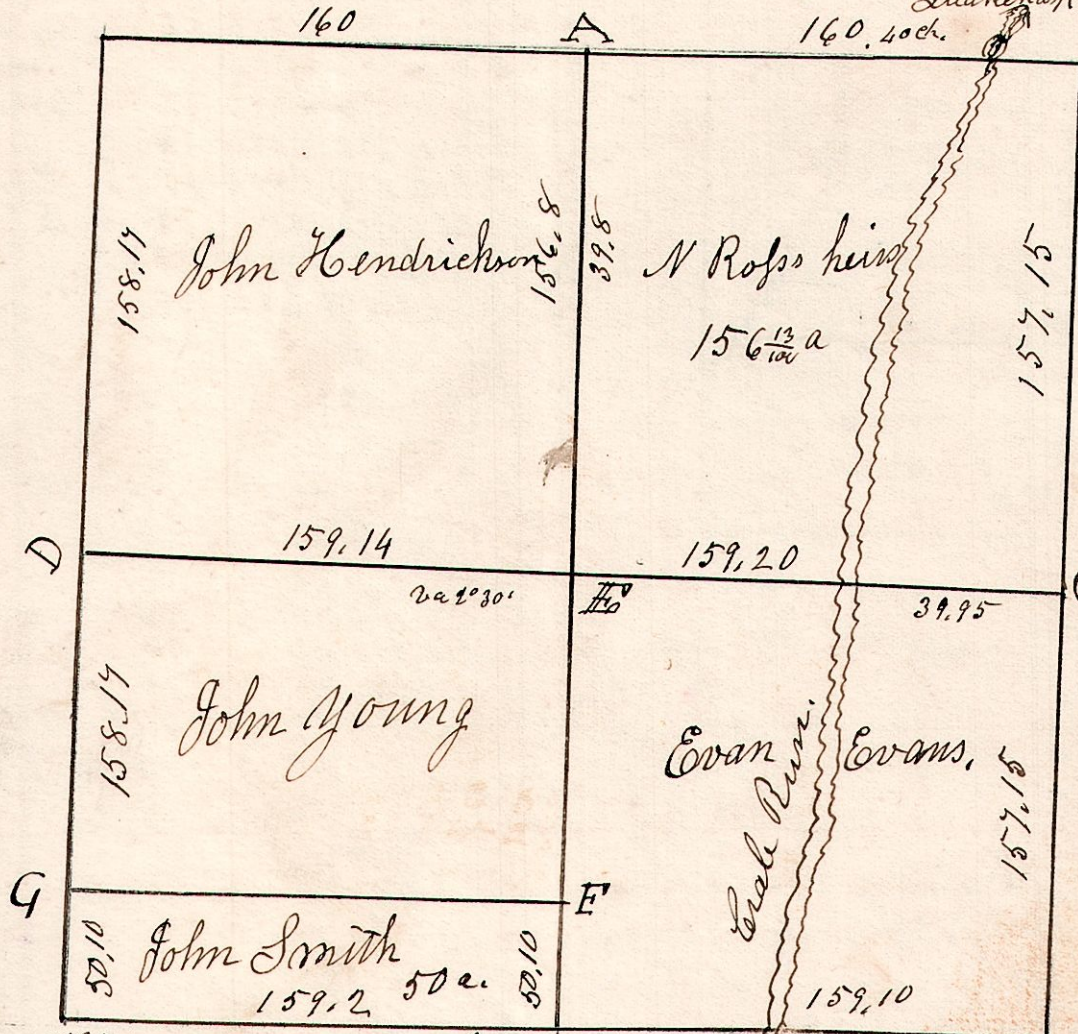
15.20.35.

March 14th 1827. Surveyed Section 35, T 20, R 15. in the following manner and for the following persons.

W Oak 18 S 86 E 33.
do 14 N 27 W 31.

Hickory 12 S 70 E 5.
do 15 S 69 W 9 1/2.

Cherry 8 S 25 E 3 1/2.
B. Oak 6 N 78 W 30.
Quaker 15 S 61 E 8.



W. Oak 4 S 59 W 19.
B. Oak 4 N 69 W 17.

W. Oak 10 S 63 W 15 1/2.

| | | | | |
|---|--------|----|-----------|--------|
| H | W. Oak | 12 | S 57 W | 27 1/2 |
| I | do | 15 | N 79 W | 39 |
| F | W. Oak | 15 | N 71 W | 15 |
| G | do | 12 | S 3 1/2 E | 81 |
| G | W Oak | 6 | S 26 W | 42 |
| " | do | 5 | N 79 E | 17 |

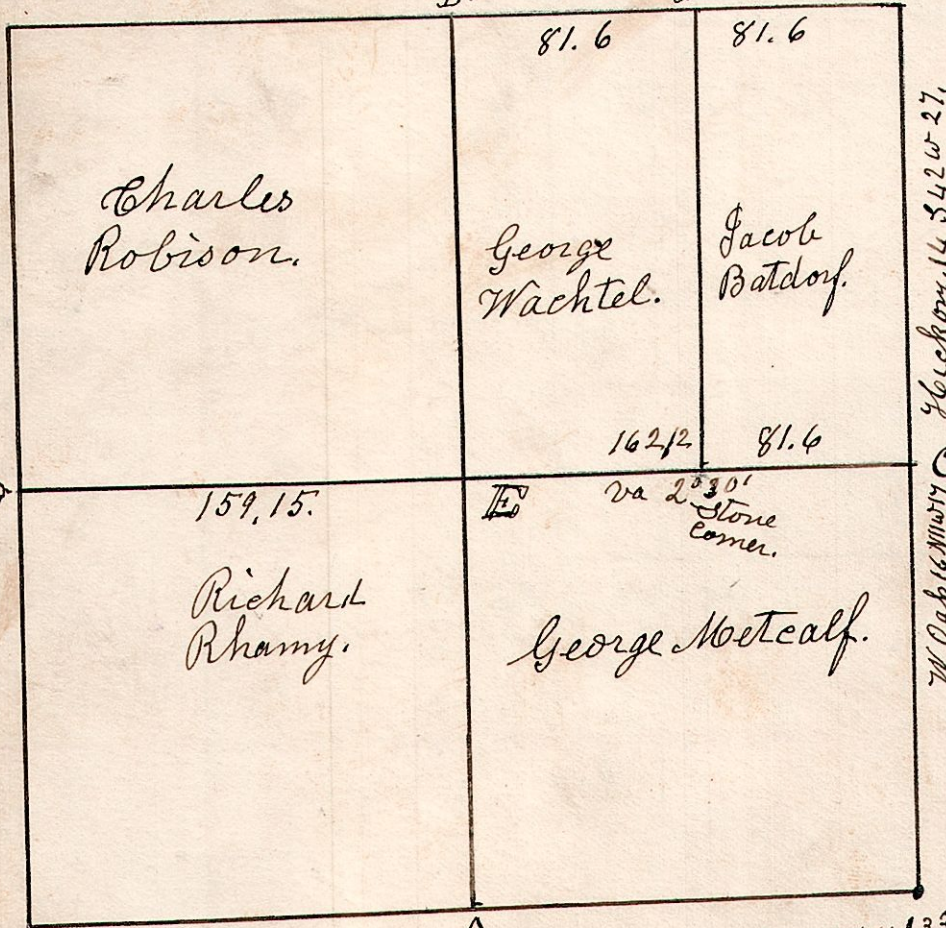
B. Oak 9 N 37 W 68.
W. Oak 10 S 33 E 22.

W. Oak 20 N 20 W 16.
do 16 S 49 E 32 1/2.

B. Oak 4 S 82 E 38.
do 5 S 7 W 28.

15.20.36. Surv. Sec 36 in T 20 R 15 in the following manner, and for the following persons. November 26th 1830.

B. Oak 36 N 5 W 50.
do 6 S 35 W 26



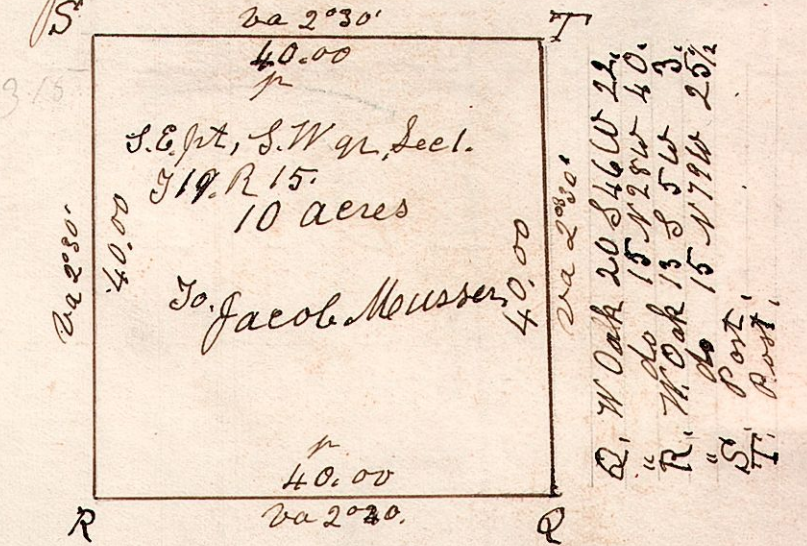
S. W. Oak 15 S 61 W 15 1/2.

B. Oak 7 S 82 E 38. W Oak N 59 W 51. B. Oak 8 N 20 W 133.
do 5 S 7 W 28. do N 77 E 18. Gum 14 S 32 W 216.
N. B. Divided the N E q. May 3rd 1833.

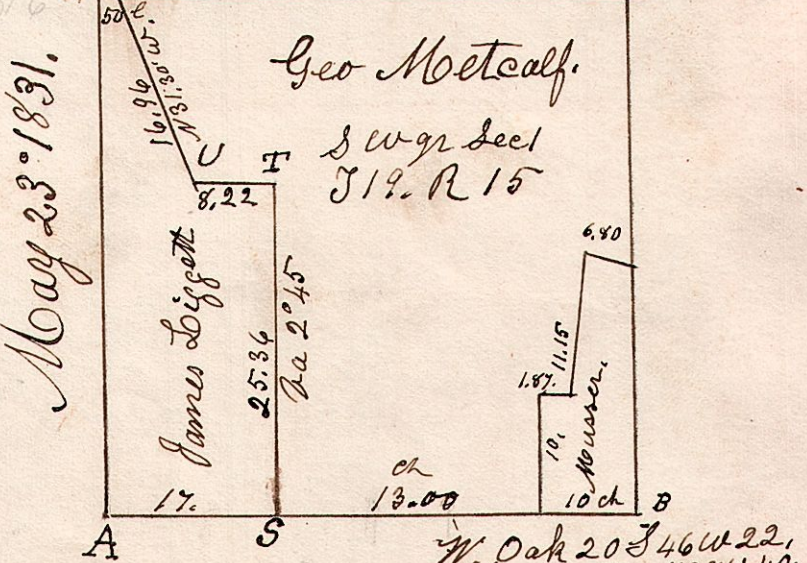
N. B. Divided the N E q. May 3rd 1833.

H. R. Oak 15 S 13 E 23.
I. W. Oak 12 N 48 W 42.

15.19.1. April 11th 1827. Surveyed 10 acres of land for John Lightfoot, being part of the S. W. q. of Sect. 19, R 15, situated in the S E corner of said Quarter Section.



15.19.1. S. W. q. Sect. 19, R 15. W. Oak 14, N 59 W 51. do 24 N 77 E 18.



S. W. Oak 40. N 25 W 60.
" Hickory 9. N 1 E 65.
I. W. Oak 24. N 23 W 34.
U. R. Oak 18 the corner.
V. B. Oak 4 S 69 E 21.
" Noaple 6 S 65 W 34 1/2.