

15. 19. 13.

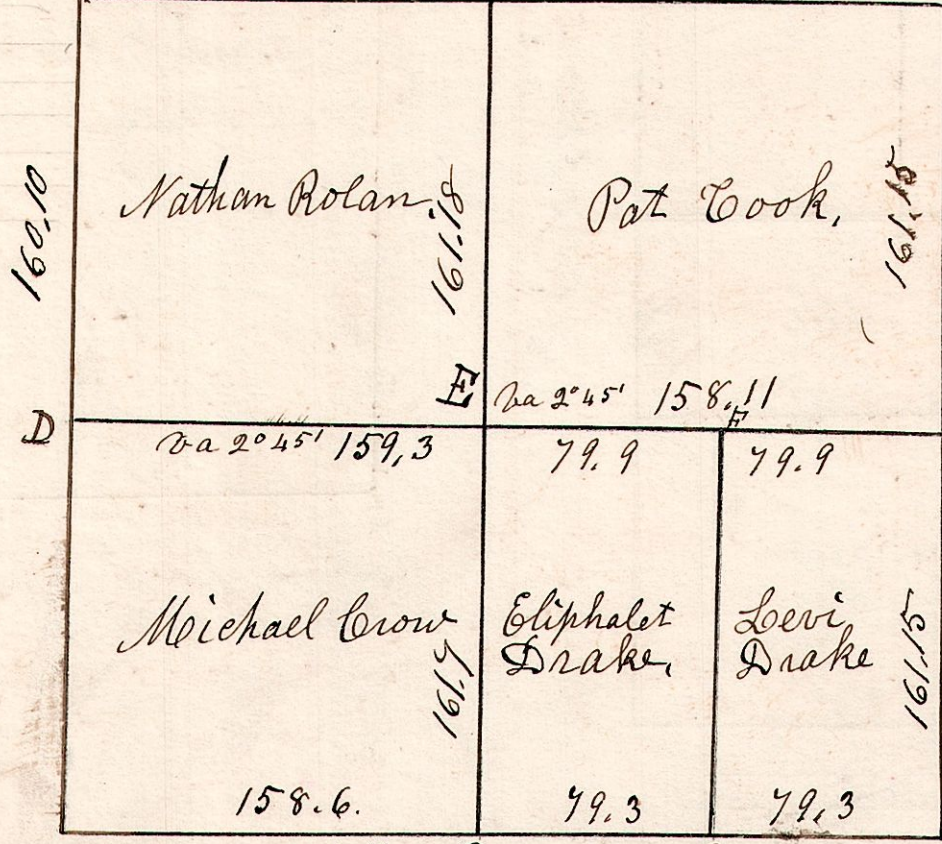
March 2^d 1827. Surveyed Section No 13, T19, R15 in the following manner and for the following persons.

W. Oak 20 N77E9,
W. Walnut 4 S77W20

W. Oak 12 N29W30,
do 16 S 68 50.

W. Oak 26 N30W20,
do 26 S 2W 14.

G	W. Oak	6	N60W	39
E	Hickory	6	N8E	25
	W. Oak	40	S67E	25
F	do	12	N82W	53 1/2
	Hickory	15	N78W	7
	Beech	8	S81E	33 1/2



W. Oak 24 N56E12,
Sugar 6 S 70W 10.

Hickory 10 N19W20,
W. Oak 14 S62E24.

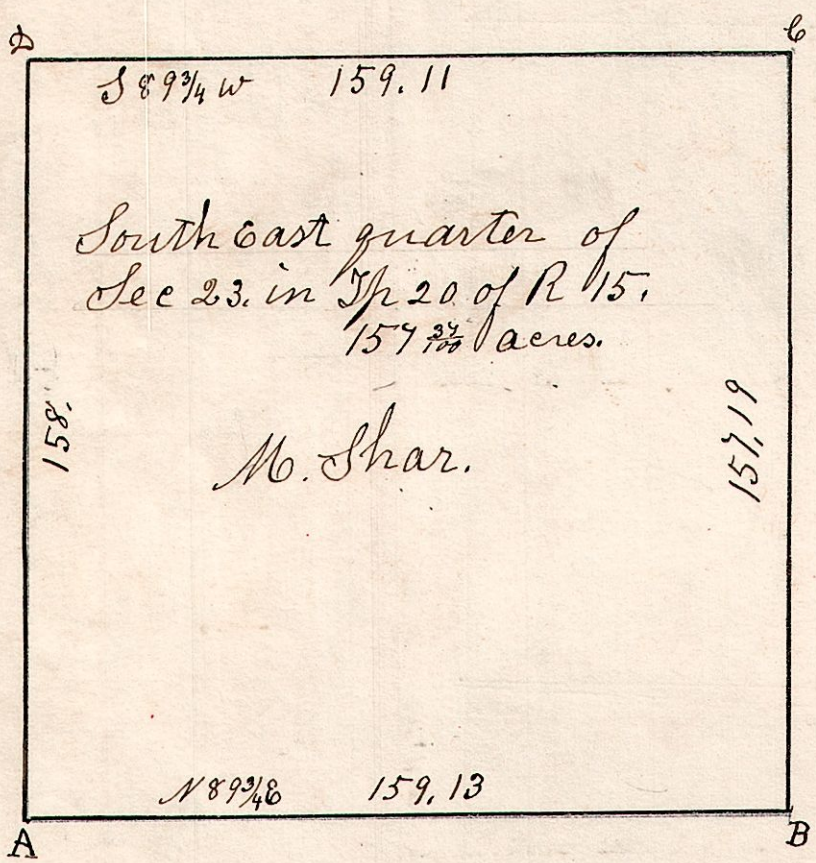
W. Oak 34 S70W30,
Hickory 6 S76E25.

316.12 B
W. Oak 7 N7E18 1/2
do 6 N70W18

Hickory 12 S76W33,
do 9 South 7.

15. 20. 23.

March 12^d 1842.
S.E. q. Sec 23, T20, R15.



- A. W. Oak 12 N57E 6 links.
- B. W. Oak stump 340 E. 22 links.
- C. Post. Stone to be planted.
- D. Stone 2 1/2 perches east of corner. (corner in creek)

15. 19. 12. Oct 18^d 1841.
Surveyed the following
S.W. q. of Sec 12, T19, R15

