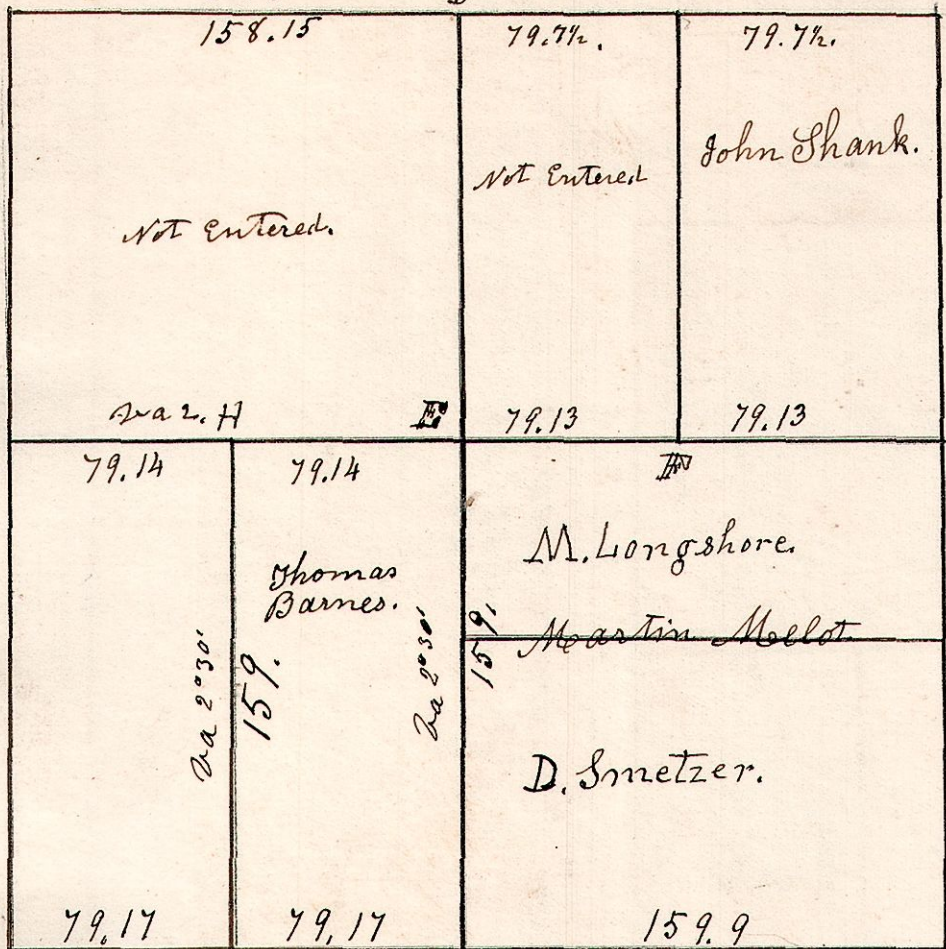


15.19.3.

May 25th 1831 Surveyed Sec 3 519. R 15 in the following manner, & persons.

304

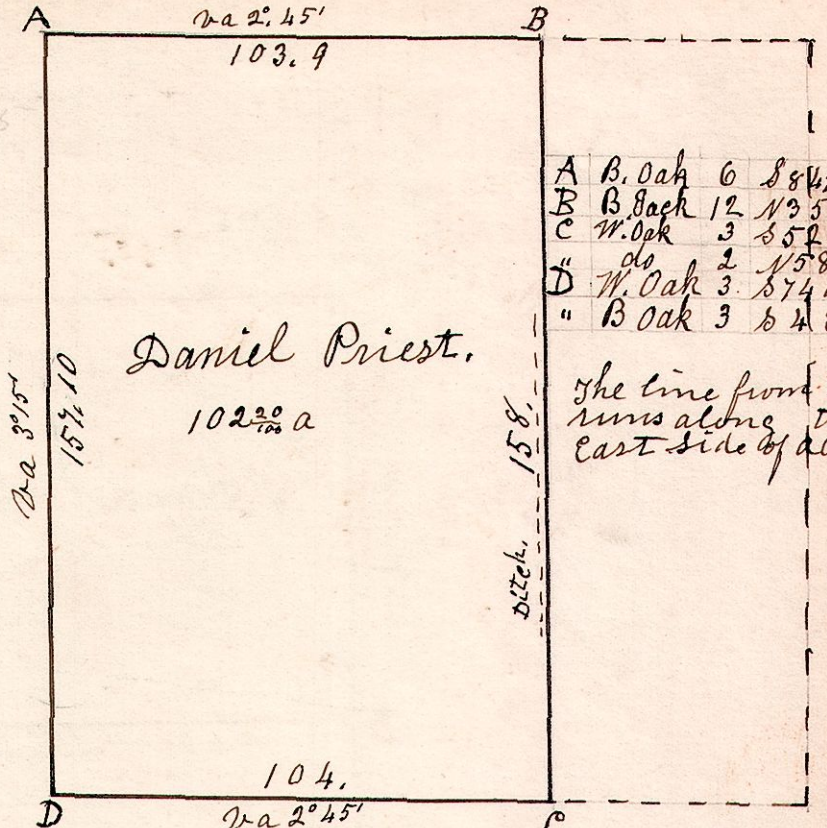
W. Oak 2 S 32 W 22.
Briakenash 4 S 46 E 18.



E	B. Oak	3	S 13 E	50	H	S. W. Oak	18	N 57 W	27
"	do	2	S 88 W	21	"	do	18	S 83 E	40
F	W. Oak	20	N 5 E	48	I	W. Oak	13	N 31 W	28 1/2
"	do	18	N 38 W	32	"	Gum	7	S 83 E	40
G	S. Oak	18	S 22 W	13					
"	do	18	N 36 E	2					

15.20.31. June 24th 1830, Surveyed the 109
W pt of N 6 gr, Sec 31. 5 20. R 15. for Daniel Priest.

305



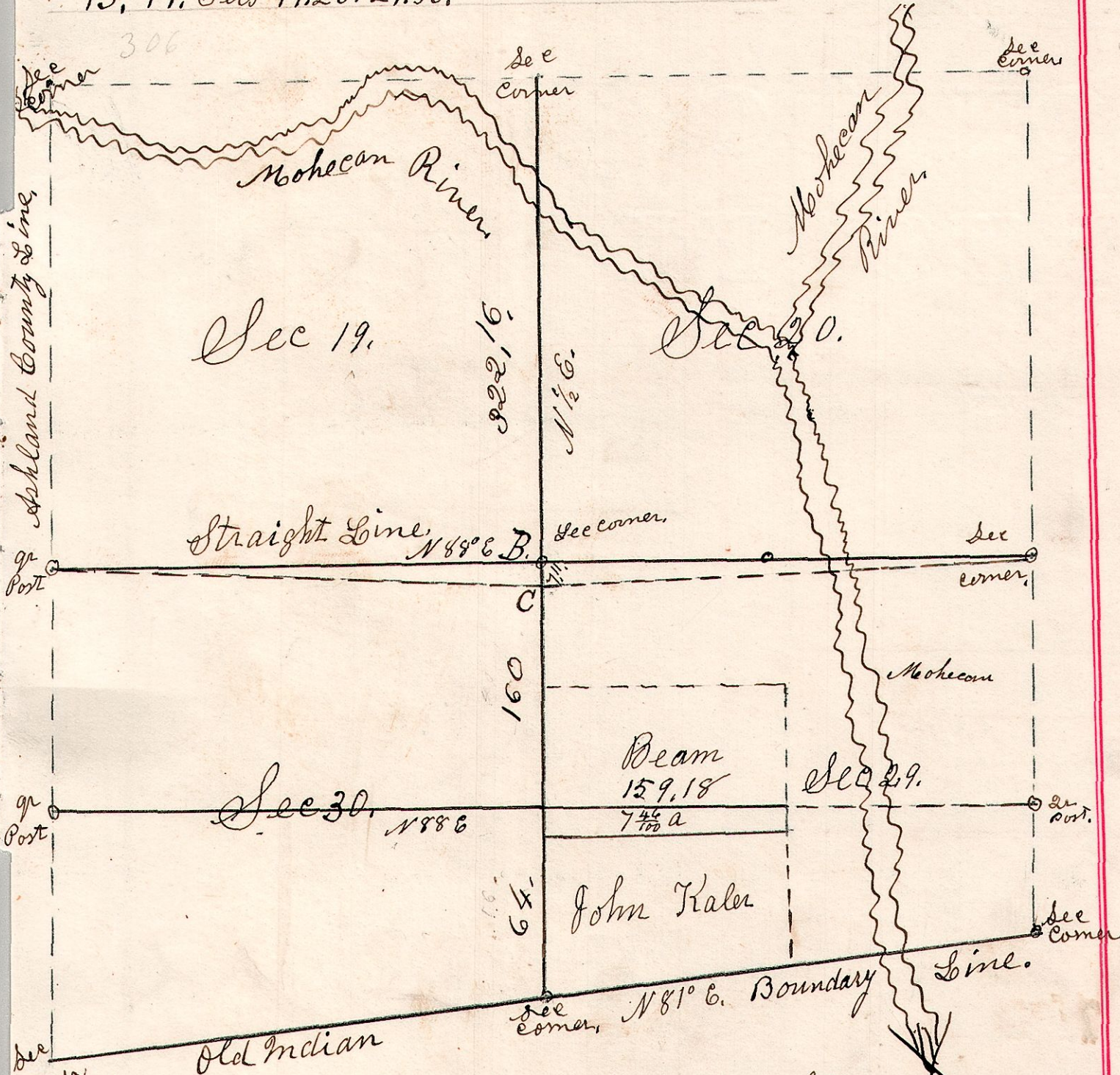
A	B. Oak	6	S 84 1/2 W	38 6
B	B. Oak	12	N 35 W	107
C	W. Oak	3	S 52 W	22
"	do	2	N 58 E	9
D	W. Oak	3	S 74 W	52
"	B. Oak	3	S 4 E	51

The line from B to C runs along the East side of a ditch.

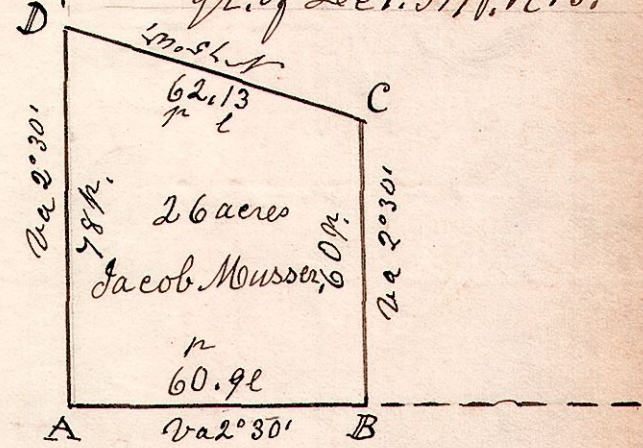
Stone the corner

B. Oak 5 S 78 E 35.

15.19. Secs 19.20.29.30.



15.19.1. Sept 11th 1829.
S.W. corner of S.E. gr. of Sec 1. 519. R 15.



A	S.W. Corner of gr Section.
B	Beech 12 N 57 E 12
"	Sugar 15 S 34 W 32
C	B. Oak 20 S 19 E 21
"	W. Oak 15 N 26 W 53
D	Ash 15 N 37 E 39
"	Dogwood 8 S 27 W 48

Surveyed E & W line 2 miles. May 30th 1871. Chain Carriers,
Surveyed N & S line 1 3/4 miles Nov 14th 1871. Abram Bell
Section Corners at B & C. is 7 1/2 miles apart. Wilson Adeline.
Corner "C" made by Coperly & Sponoel,
Corner "B" made by S & B Robinson
John Kaler claims the 7 1/2 a piece.