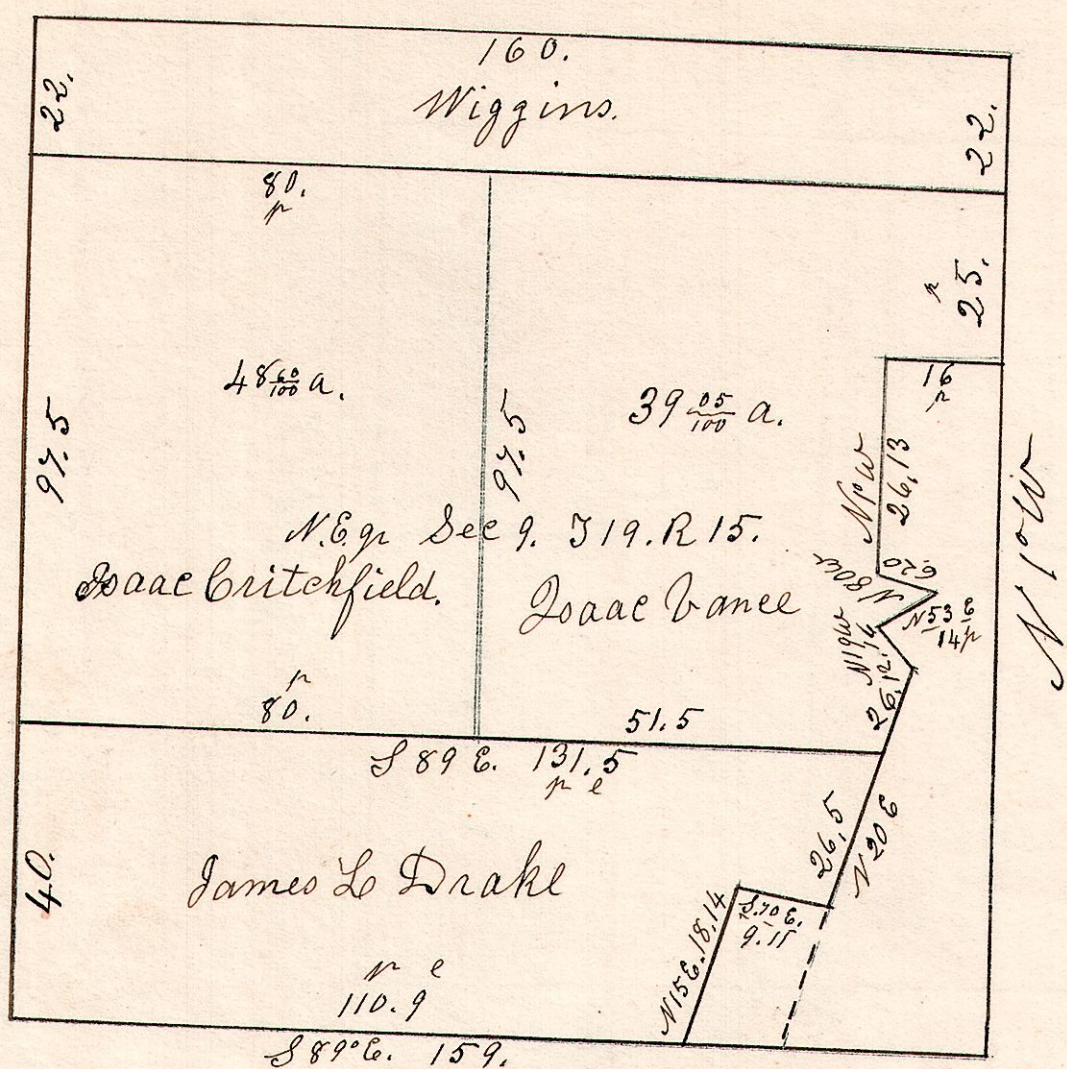


Sept 6th 1860.

15.19.9.

North east quarter of Section 9 in T₁₉R₁₅.

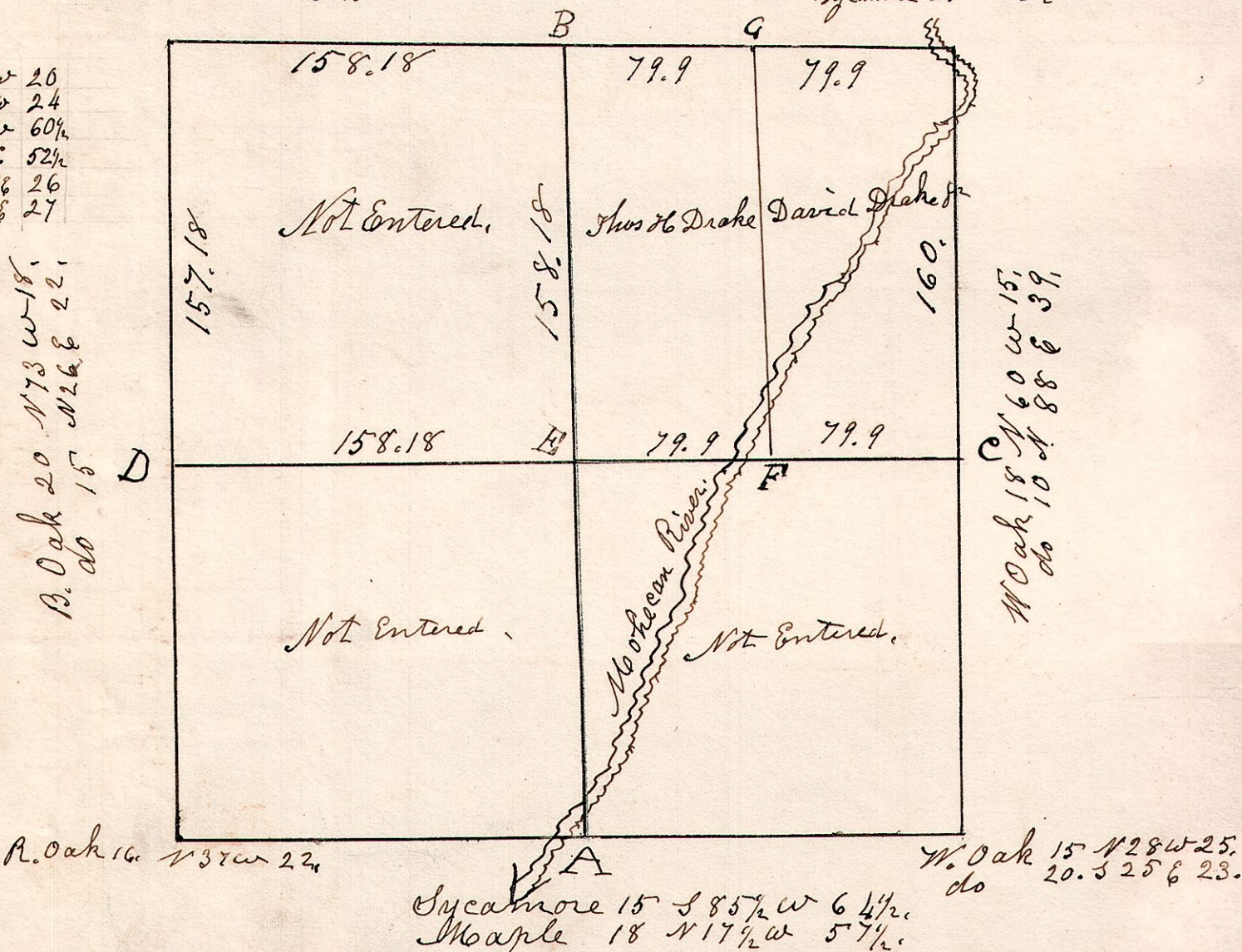


15.19.8.

April 28th 1831. Surveyed Section 8, T₁₉R₁₅ in the following manner for the following persons.

W. Oak 34 S 16 W 83. 317.11 B. Oak 12 N 96 59. Elm 20 S 35 W 52. Sycamore 24 S 36 E 11.

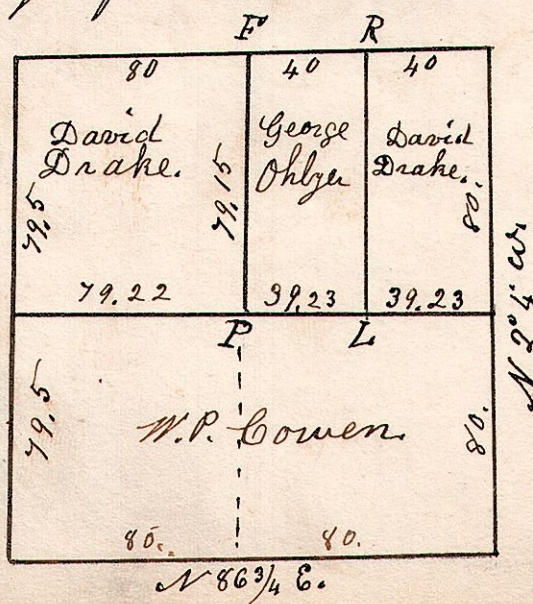
E	Dogwood	8	N 56 W	20
F	B. Oak	4	N 15 W	24
F	W. Oak	16	N 10 W	60 1/2
G	R. Elm	8	S 35 E	52 1/2
G	W. Oak	20	N 52 E	26
G	do	20	N 14 E	27



15.19.8. s.e. q_r

S E q_r of Sec 8, T₁₉R₁₅.

L	Dogwood	8	N 59 W	33
"	W. Elm	12	N 19 W	35
F	W. Oak	16	N 10 W	40 1/2
P	Gum	13	N 3 E	63
"	Dogwood	6	S 30 E	5
R	Chestnut	18	S 42 E	45
"	W. Oak	10	N 12 E	49



November 28th 1854.