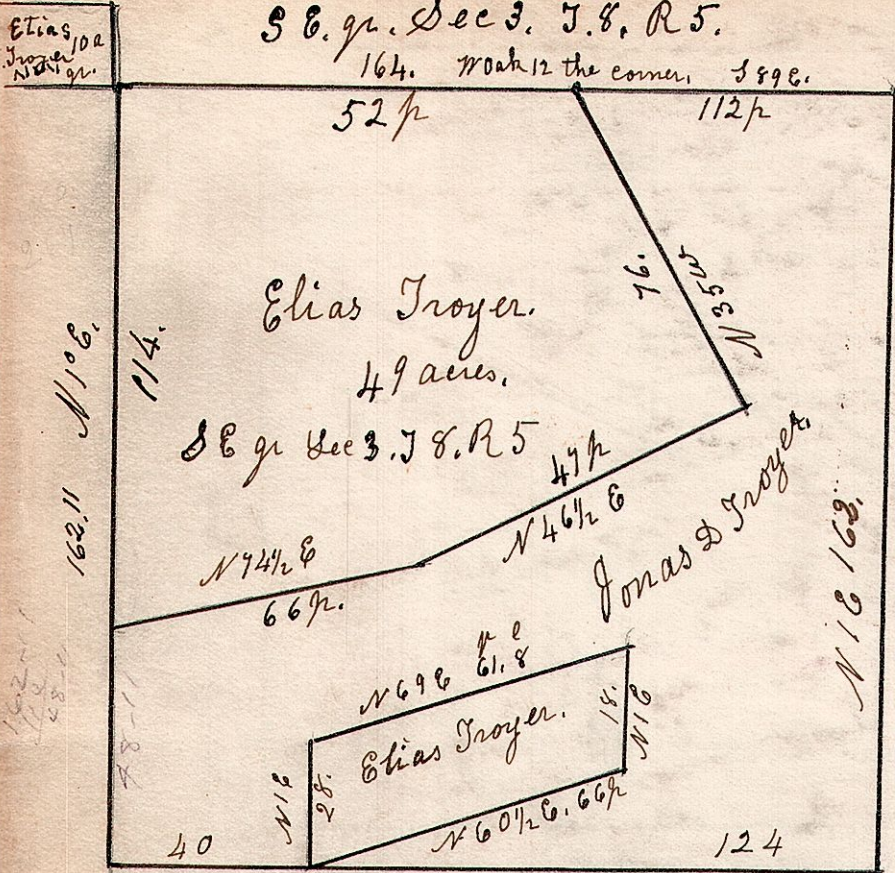


100 5.8.3.

S.E. qr. Sec 3. T. 8. R. 5.

164. north the corner. S 89 E.



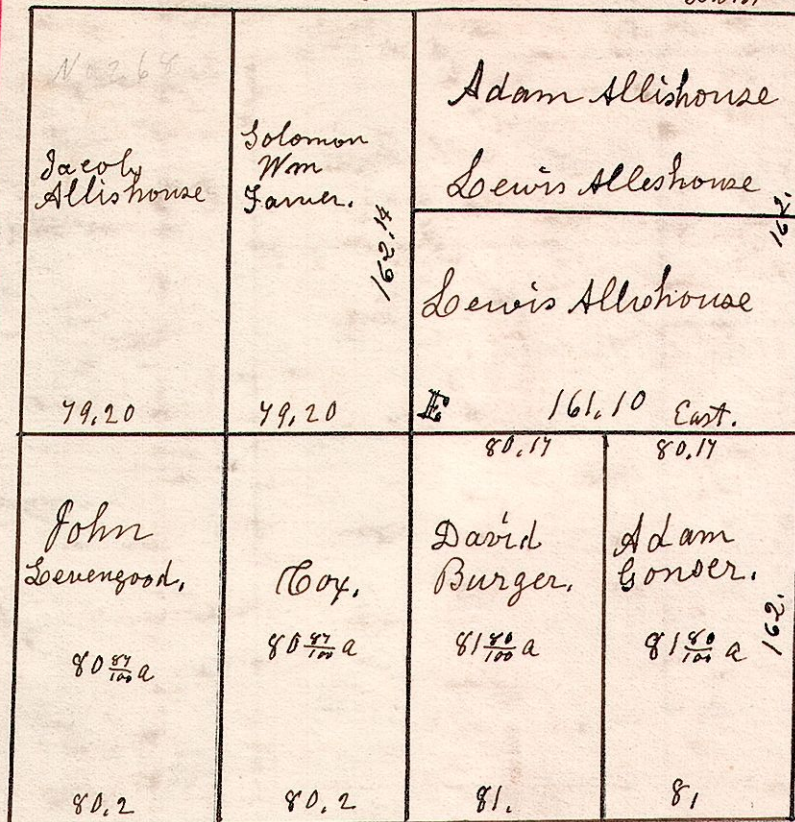
Surveyed April 11th 1846.

5.8.23.

S 23. 58. R. 5.

October 25th 1836.

W. Oak 18 S 85 E 24. B. Oak 11 W 4 E 6.
do 20 N 55 W 34. do 12 S E 31.



March 25th 1839

See Survey 1850. A 162.
B. Oak 8 N 89 E 10.
W. Oak 4 N 72 W 4.

5.8.17.

December 27th 1834. Surveyed Section 17. T. 8. Range 5. in the following manner for the following persons.

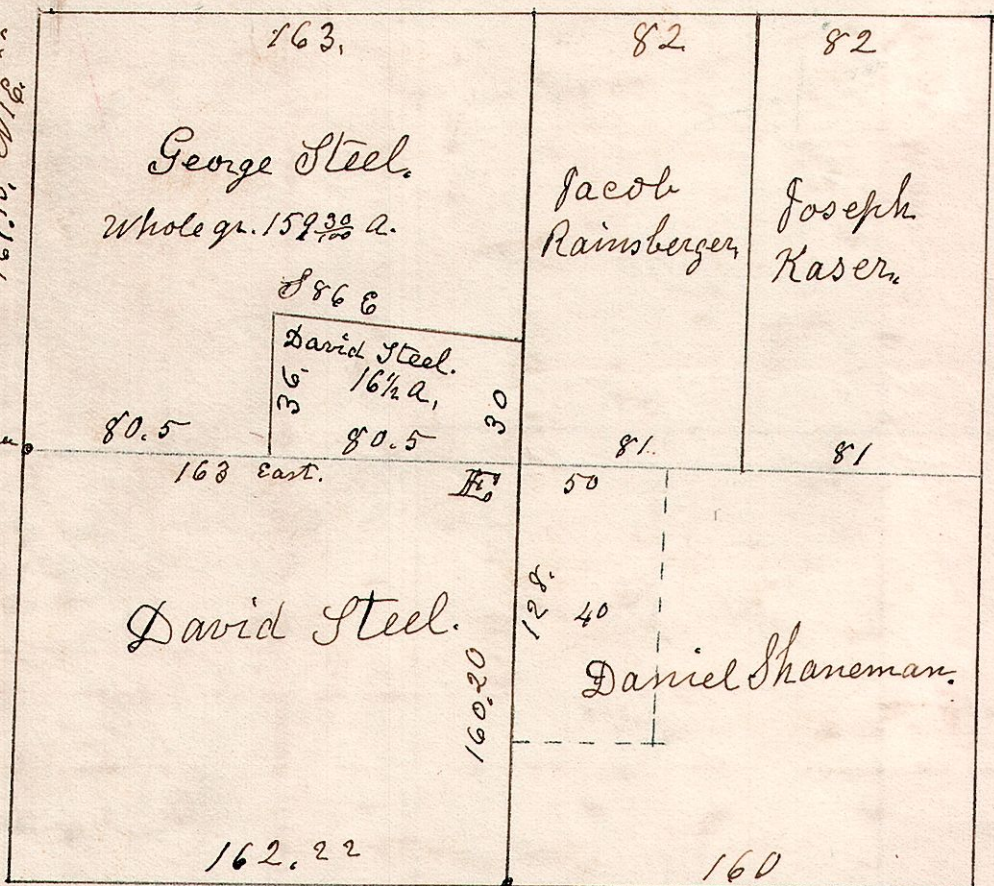
Wichory 12 N 43 E 34. W. Oak 24 W 56 W 6. W. Oak 15 N 21 W 45.
W. Oak 8 N 63 W 28. do 14 S 37 1/2 E 24. Elm 15 S 74 E 45.

Chestnut 15 N 61 E 6.
B. Oak 12 S 61 W 8.

Wichory 6 S 30 E 18. Stone 1/2 corner.

B. Oak 3 N 53 W 7.
do 5 S 53 E 4.

Chestnut 10 S 58 E 12.
B. Oak 20 N 11 W 54.



B. Oak 6 N 23 E 11.
W. Oak 3 NW - 6.

NW pt S E qr
40 acres.
F. Kefauver

Stone 8" corner
sees decayed

B. Oak 20 S 66 3/4.
do 15 N 8 E 6.

5.8.17. N.W. qr of Sec 17. T. 8. R. 5.

5.8.6. Sw qr. Sec 6. T. 8. R. 5.

