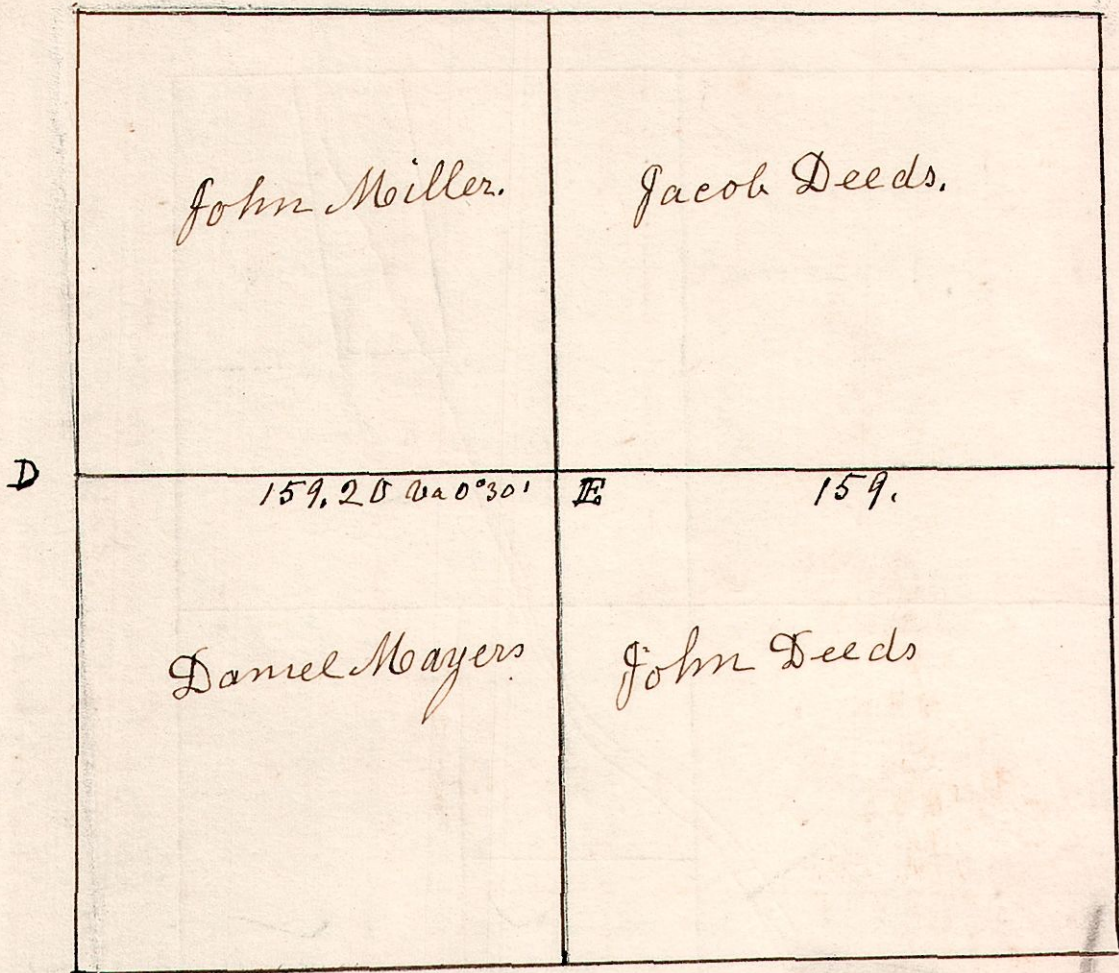


5. 8. 13

April 9th 1833. Surveyed Section 13. in T 8. of R 5 in the following manner and for the following persons.

W. oak 40 N 28 E 21.
do 9 S 65 W 27.
B

No 250



W. Oak 15 S 78 W 3.
do 8 S 54 E 28.

W. Oak 30 N 64 E 13.
do 18 N 71 W 30.

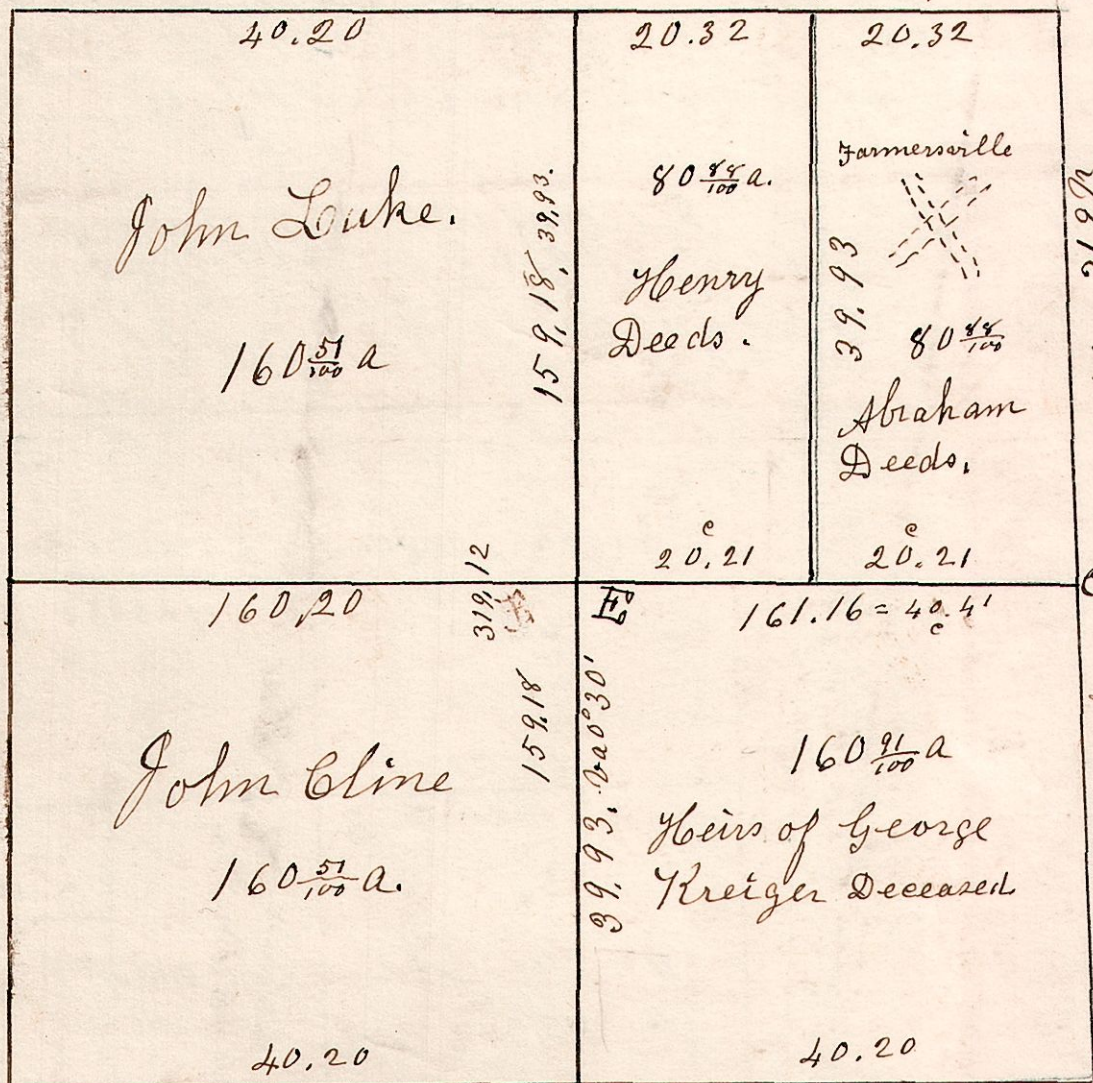
W. Oak 20 S 83 E 57.
B. Oak 7 S 70 W 35.

Hickory 16 S 68 E 20.
do 15 S 82 W 30.

5. 8. 12.

May 29th 1832 Surveyed Section 12 in T 8 of R 5. in the following manner and for the following persons.

W. oak 14 N 43 W 22. W. oak 14 N 75 E 15. W. Oak 20 S 24 W 12.
do 12 S 63 E 15. do 18 S 50 W 12. do 12 N 38 W 12.
L B G H



W. Oak 30 N 63 E 12.
do 18 N 72 W 30.
B 319.20

Hickory 16 N 81 W 26.
W. Oak 10 N 88 E 55.
319.20

W. Oak 16 N 45 W 41.
do 15 S 47 E 29.

W. Oak 12 S 44 W 9. B. Oak 24 N 42 E 31 Deceased. B. Oak 12 S 78 E 23.
do 12 N 57 W 42.

E	Elm	8	S 4 E	21
"	W. Oak	6	N 22 W	16
F	W. Oak	20	S 31 E	25
"	do	6	S 81 W	29
G	W. Oak	20	N 41 E	34
"	do	18	N 49 W	57