

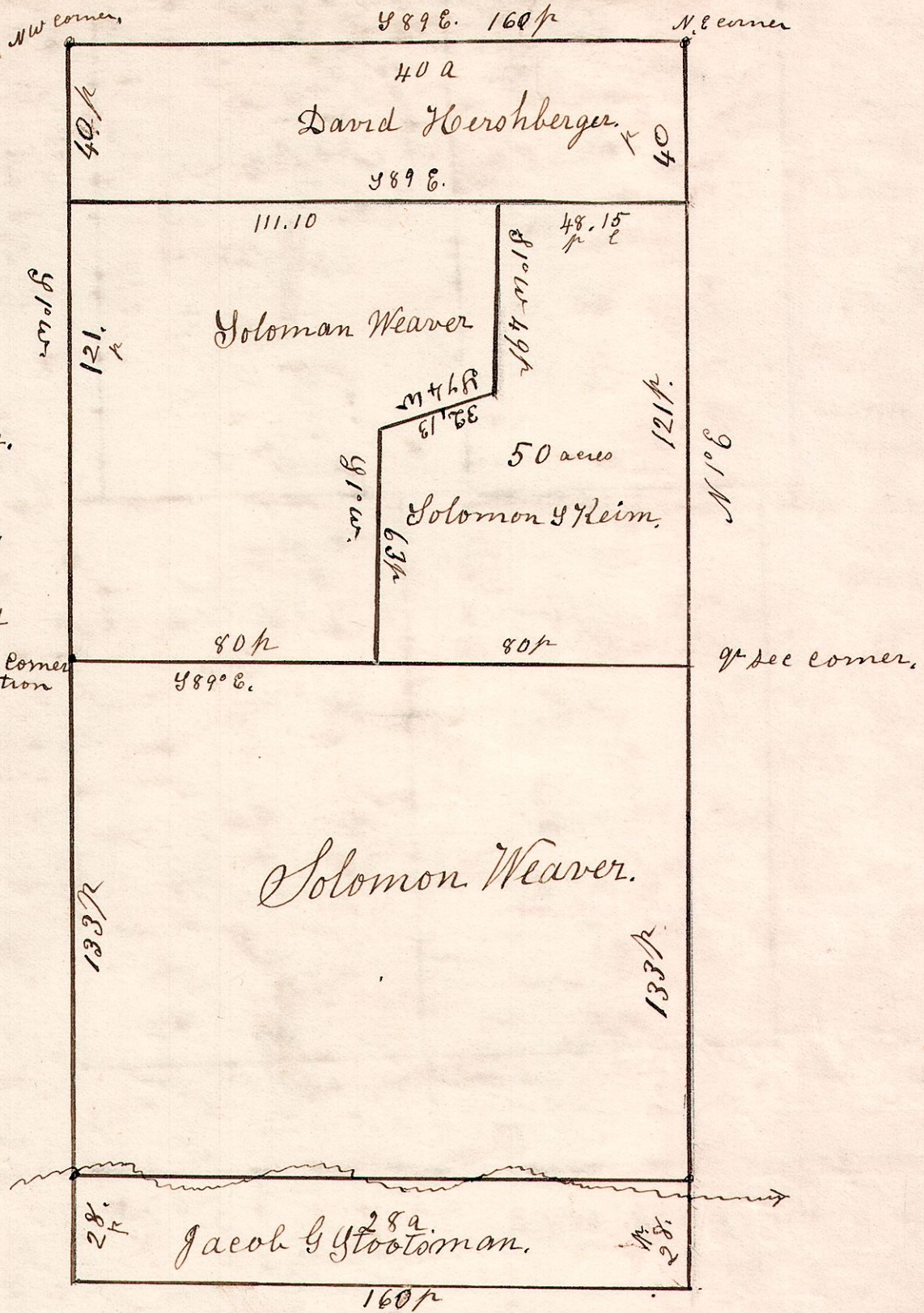
5. 9. 20. E 1/2.

East half of Sec 20. T9. R5, Samuel Weaver farm.

Old farm of Samuel Weaver.  
Surveyed first  
January 30<sup>th</sup> 1858.

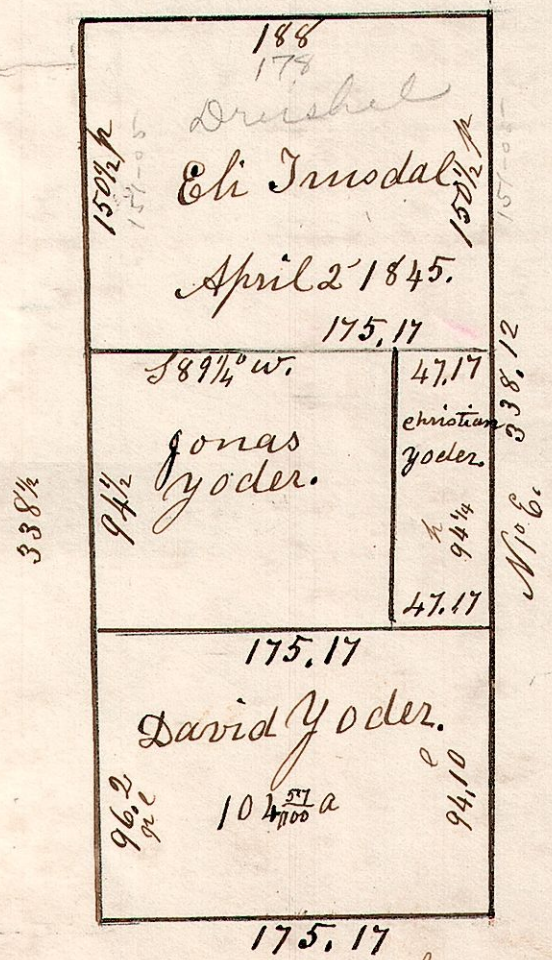
50 acre piece was surveyed  
Sept 19<sup>th</sup> 1861.

center corner  
of Section



W 1/2 of Sec 5. T9. R5.

W. Oak 12 817 12.  
B. Oak 24 157 17.



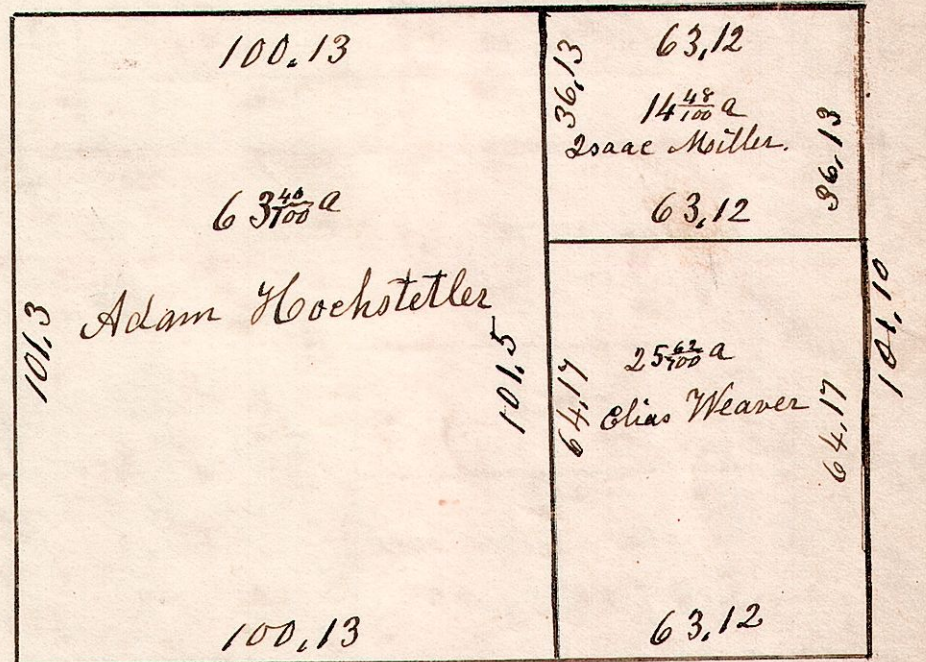
W. Oak 30 844 17.  
do 14 18 18.

5. 10. 23. 3/4.

Lot 23. 3/4 of T10. R5.

May 2<sup>nd</sup> 1867.

Chestnut 18 N 20 23.  
Hickory 15 S 3 W 19. 164.3



W. Oak 18 872 7. Whole length 164.32.  
do 24 146 57.

May 2<sup>nd</sup> 1867.

Hickory 13 N 30 E 17.  
W. Oak 15 S 55 W 8.