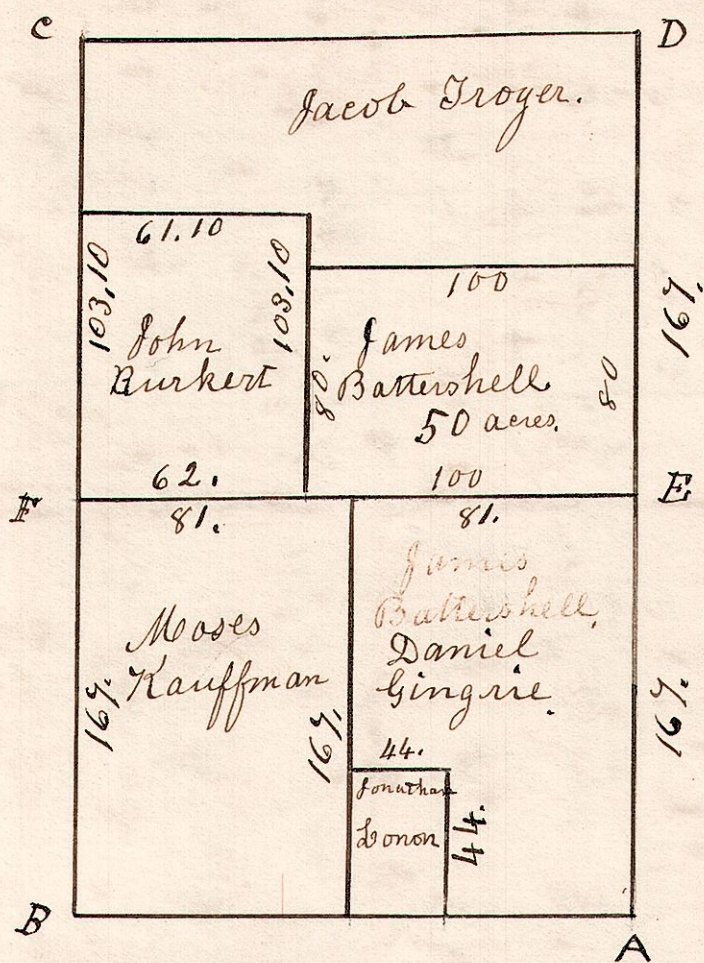


5.9.3. $W\frac{1}{2}$

June 4th 1835, Surveyed the $W\frac{1}{2}$ of Section 3. T9. R5. in the following manner and for the following persons.



Stone planted at the corners. This $\frac{1}{2}$ Section was divided into quarters in 1830 or near that time.

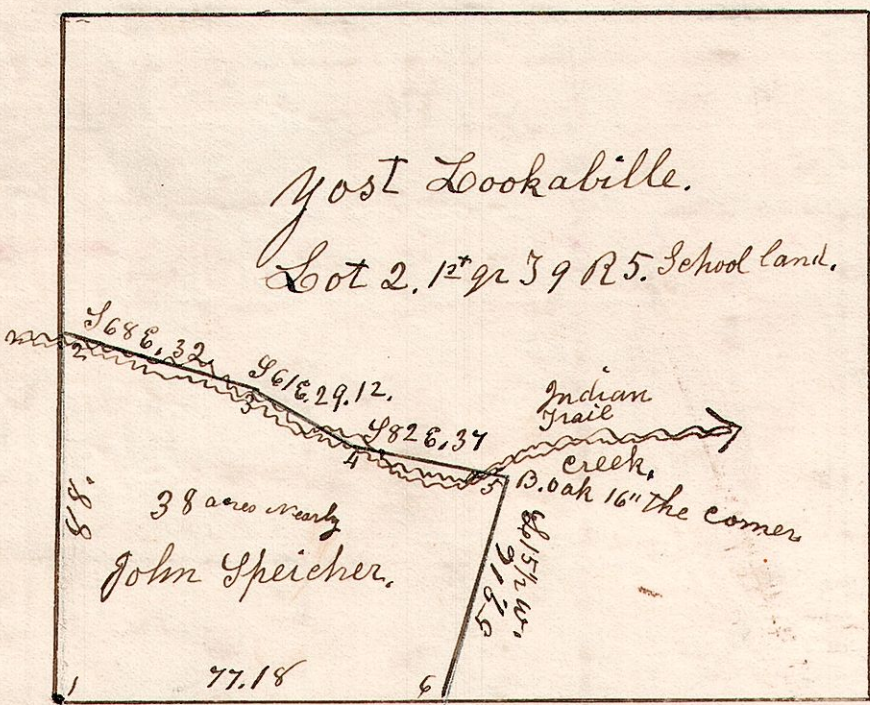
5.9.2. $1\frac{1}{2}$

January 26th 1850.

Lot 2. $1\frac{1}{2}$ q. T9. R5.

Surveyed the 38 acre piece for John Speicher.

- 1 $N\frac{1}{2} E$ 88.
- 2 S 68 E 32
- 3 S 61 E 29.12
- 4 S 82 E 37.
- 5 S $15\frac{1}{2} W$ 59.16
- 6 N $89\frac{1}{2} W$ 77.18

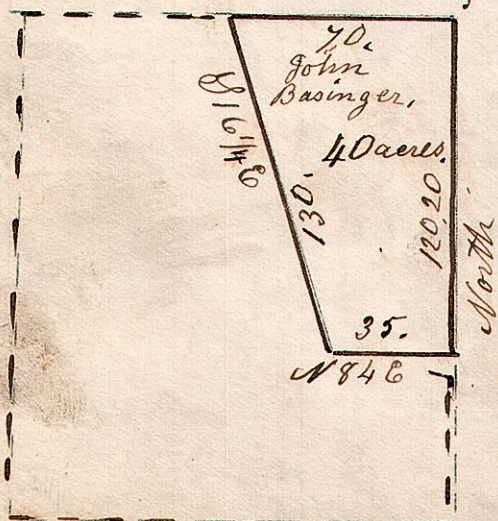


Chestnut
W. Oak
N 26 E 9.
N 43 E 38.

5.9.5. $1\frac{1}{2}$

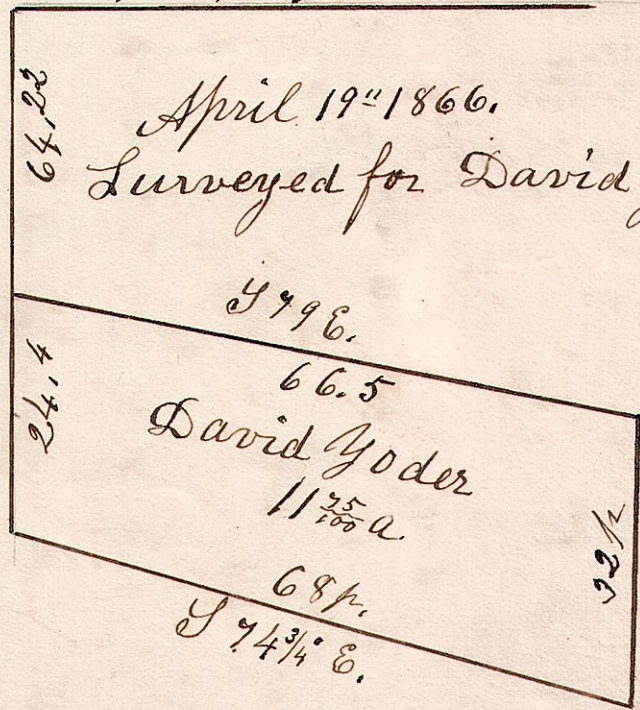
April 18th 1833.

Surveyed 40 acres out of the N.E. part of Lot 5. School land in Walnut Creek Township, $1\frac{1}{2}$ q. T9 R5.



5.9.18.

NE corner of T9 q. of Sec 18, T9, R5.



April 19th 1866. Surveyed for David Yoder.