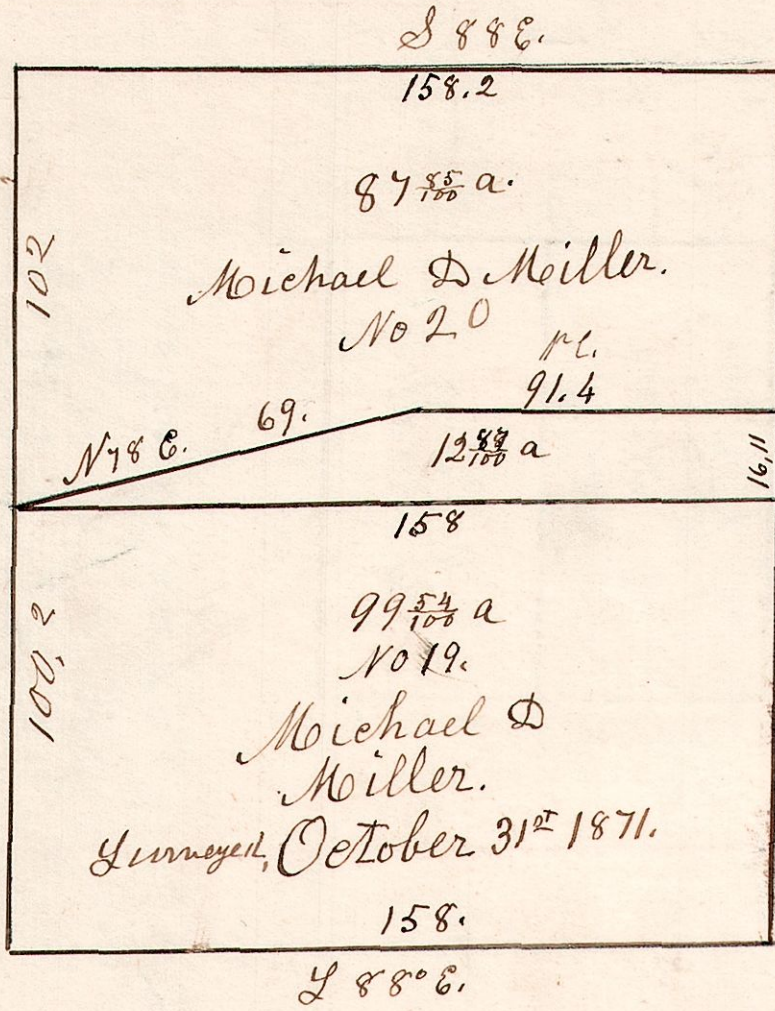


5.9. 19 3¹/₂

Lot 19 & 20. 3¹/₂ 59. R5.

Hickory 12 S 71 E 8.
Chestnut 48 N 71 W 7.

W. Oak 20 S 18 W 22
Gum 12 S 87 E 38



W. Oak 12 N 52 W 17.
Dogwood 6 S 32 E 27.

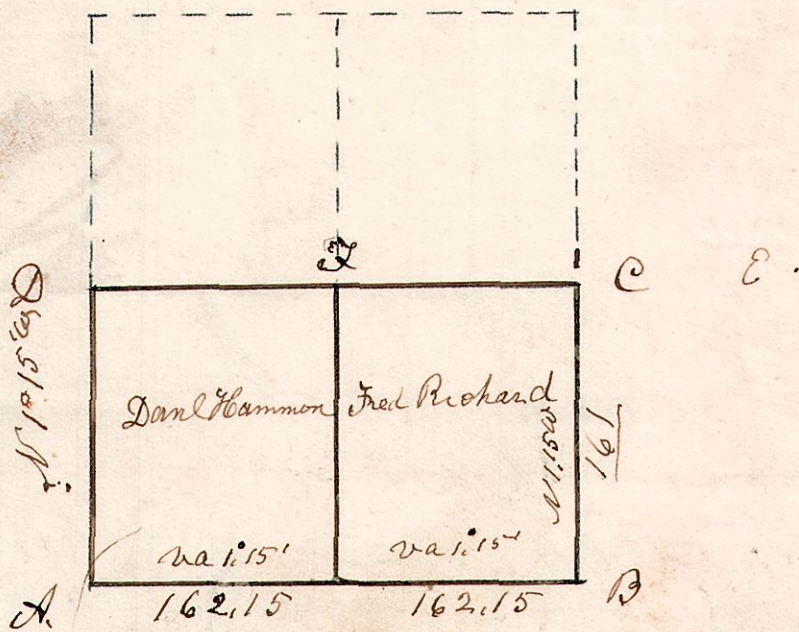
Chestnut 12 S 87 E 25.
Hickory 12 N 87 W 29.

W. Oak 18 N 74 W -
do 20 N 79 E 41

B. Oak 24 S 55 W 86.
do 20 N 11 W 26.

5.8. 11. 2¹/₂

Surveyed the south half of Section 11. in T 8. of R 5 for Daniel Hammon on the 12 day of January 1826.



of the unappropriated Military Land.

A	W. Oak	19	N 41 E	47
"	J. Oak	14	N 57 W	41
B	W. Oak	24	S 54 W	36
"	W. Oak	20	S 40 W	20
D	W. Oak	20	N 67 E	12
"	Chestnut	15	S 52 W	37
E	W. Oak	20	S 48 E	30
"	do	15	N 49 E	27
F	W. Oak	14	S 64 E	15
"	do	22	N 49 E	22