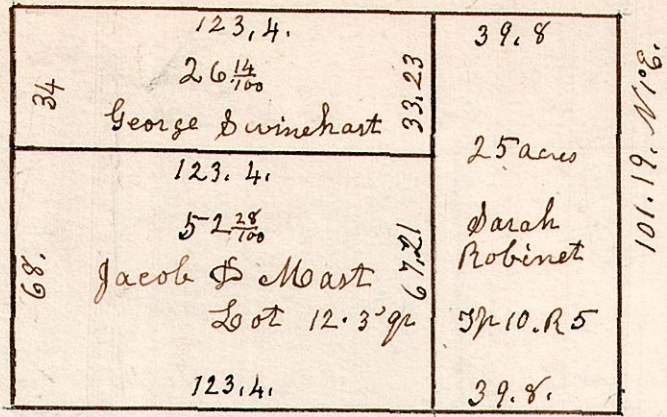


5. 10. 12. 3rd gr.

123-4
39 8

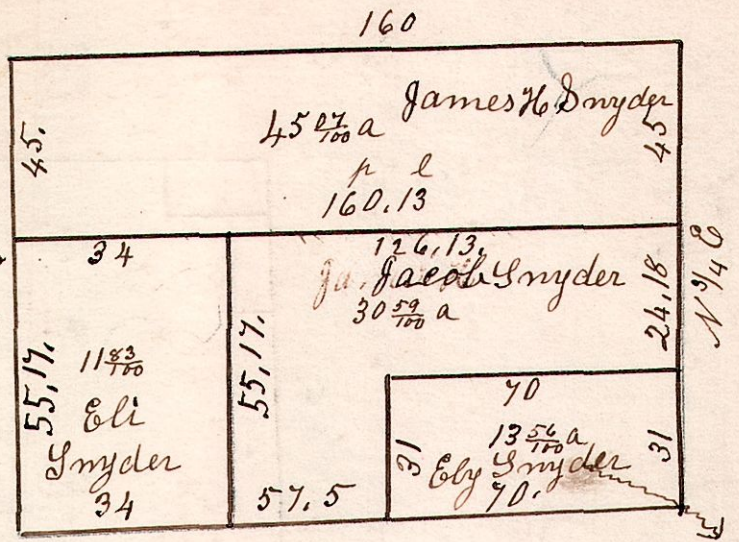


Y 89 1/2 E - 162. 12.

Sept 20th 1856.

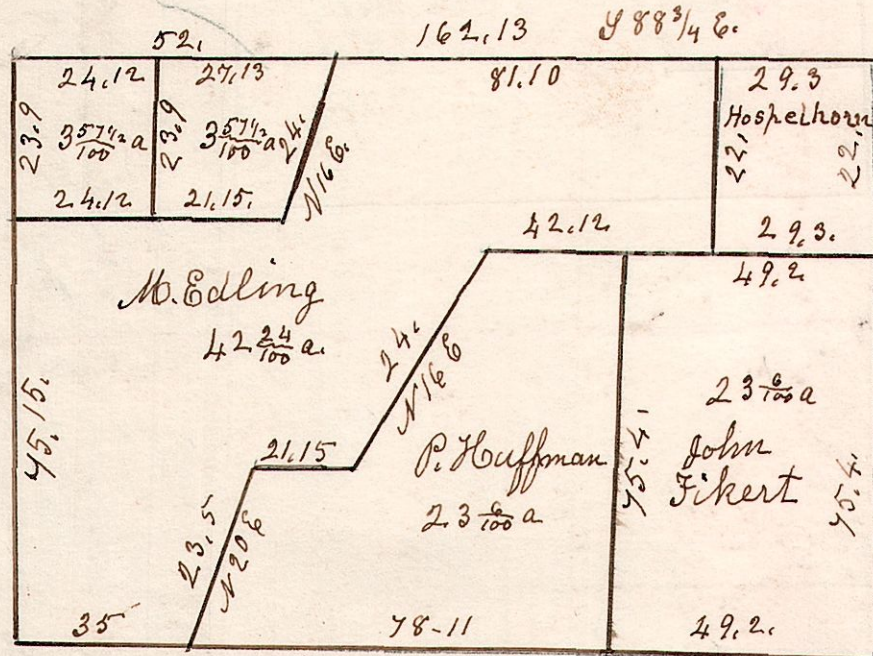
5. 10. 9th gr.

Lot 9. 5/10. R 5. 3 quarters



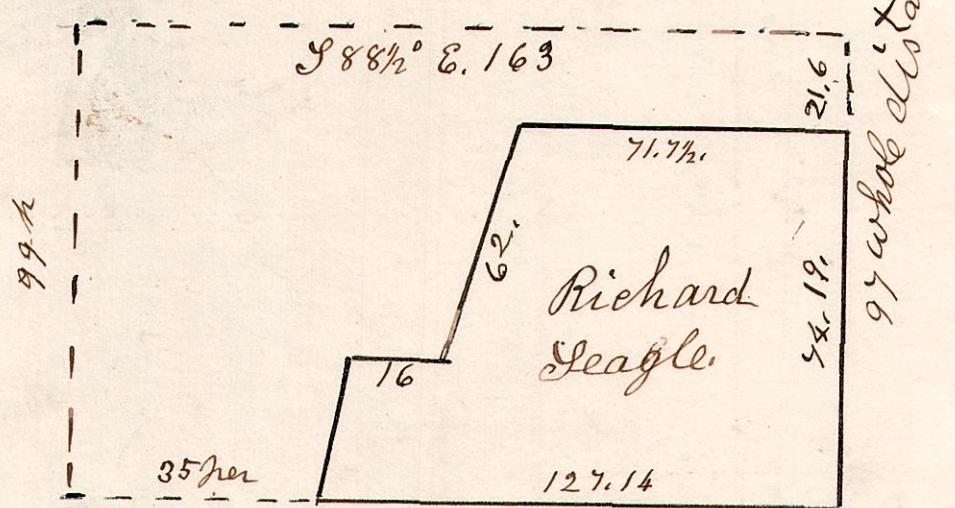
5. 10. 16. 4th gr

Lot 16. T10. R 5. 4th gr



March 15th 1854.

5. 10. 16. 4th gr. January 26th 1850. Lot 16. in 4th gr. T10. R 5.

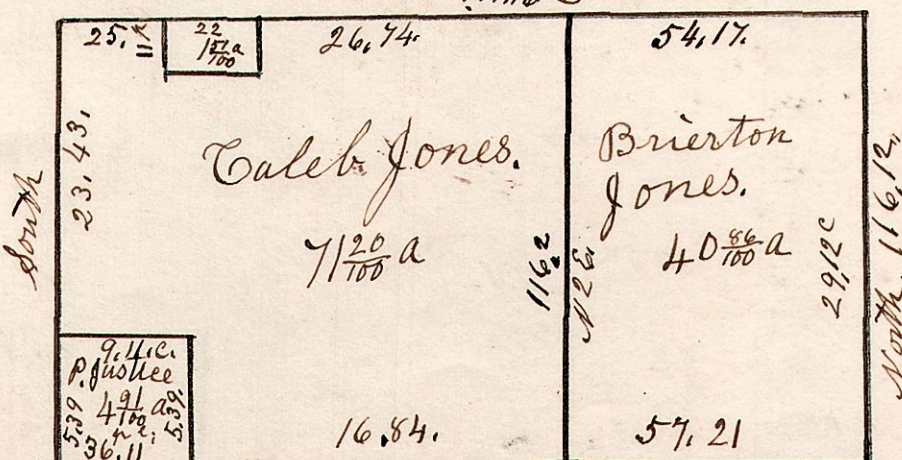


Surveyed by Anson Wheatons
Notes.
S.E. part of lot.

5. 10. 35. 4th gr.

March 22 1833,
Surveyed lot 35 in the 4th gr of T10. of R 5.
in the following manner and for the following persons.

D. Oak 20 N 80 E 10. } 40. 41. Y 89 45 E
do 15 S 74 E 12. }
161. 16 B
Ash. 6. S 14 W 24.
W. Oak 20. S 86 W 31.



A. Hereby S. S 63 W 5.
B. Past the corner.

The above was surveyed for
John and Andrew Roush

Boak 4. S 50 E 25.
W. Oak 10. S 33 W 6.
1 ²⁷/₁₀₀ a. Charles Beverington.
161. 16 A
Hereby 14 N 83 E 25
Gum 8 N 78 E 40