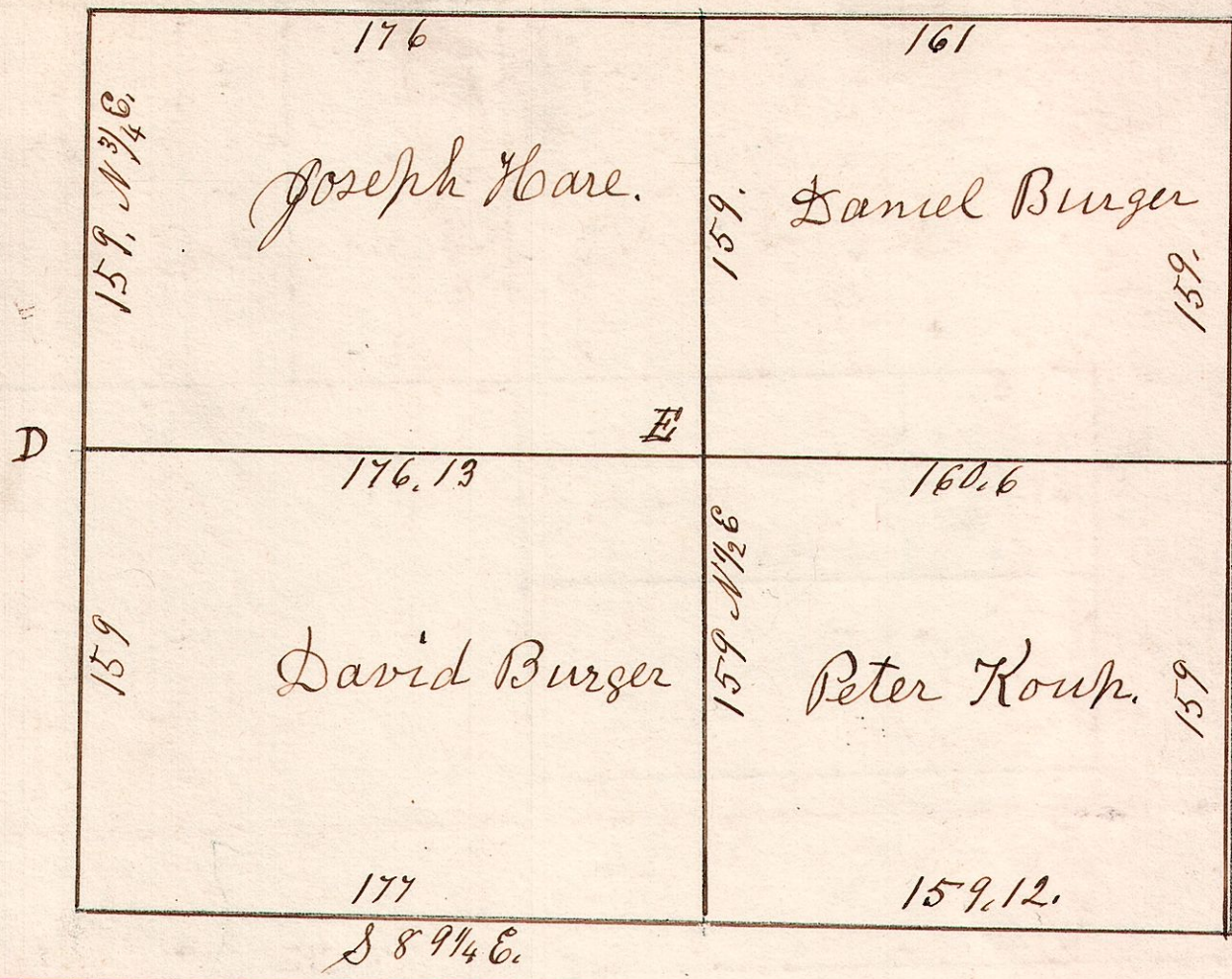


4, 8, 25.

Section 25. T₈ R 4. April 10th 1844.

No 93

W Oak 18. N 51 E 31.



March 22nd 1832. Surveyed Section 16. in T₉ of R₄. in the following manner and for the following persons.

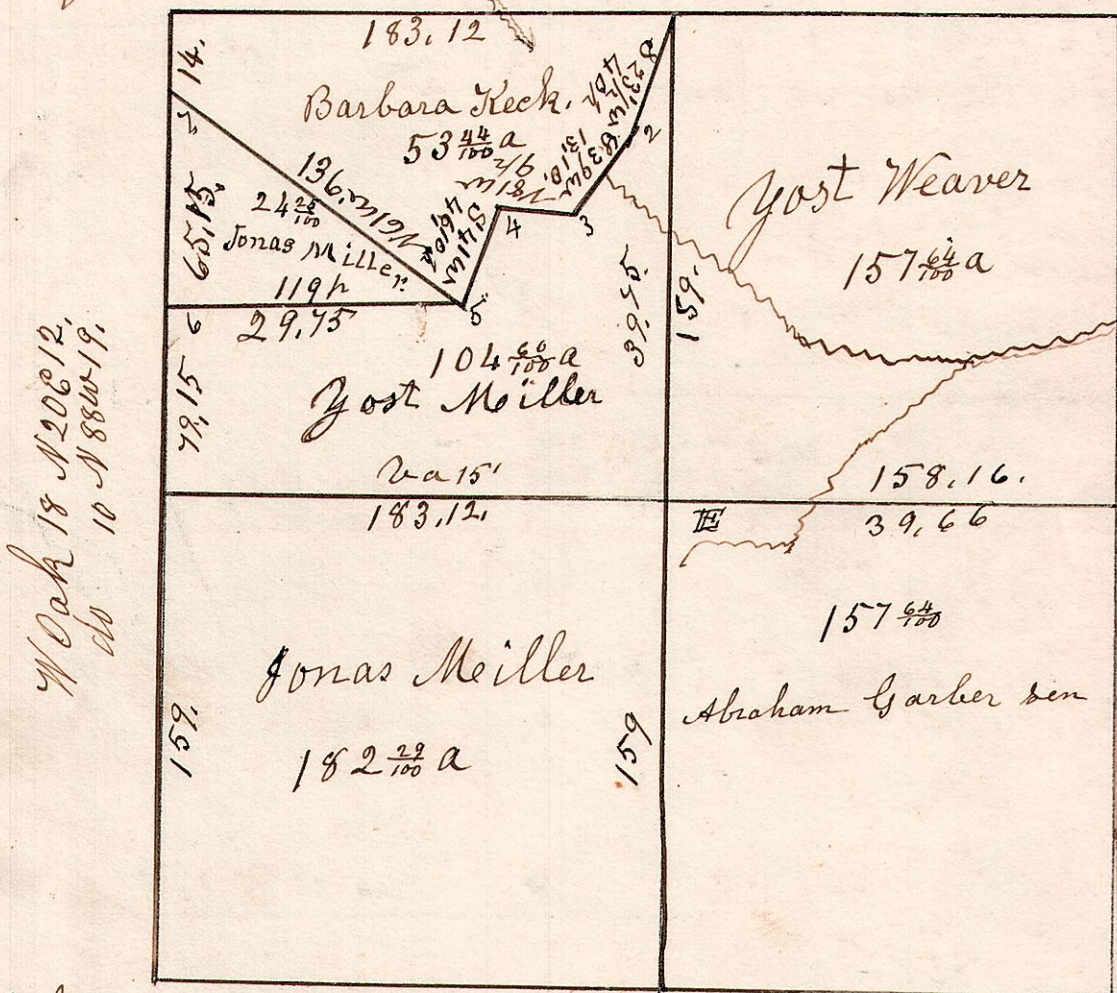
4, 9-16.

No 94

W Oak 15 S 15 W 4.
Hickory 8 North 17.

Maple 15 S 83 E 13
do 12 N 72 W 12

Gum 10 S 18 E 20.
Hickory 7 N 72 W 17.



Hickory 7 N 29 W 11.
do 14 S 56 E 31.

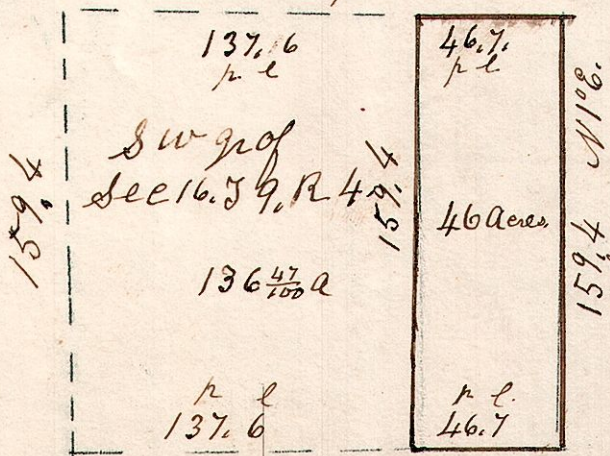
W Oak 16 N 56 W 13.
do 15 S 27 E 24.

Hickory 15 N 25 E 6.
W Oak 8 S 42 W 17.

4, 9, 16.

March 19th 1856.
Surg Sec 16. T₉ R₄.

No 95



4, 10, 12, 3rd q.

No 96.

