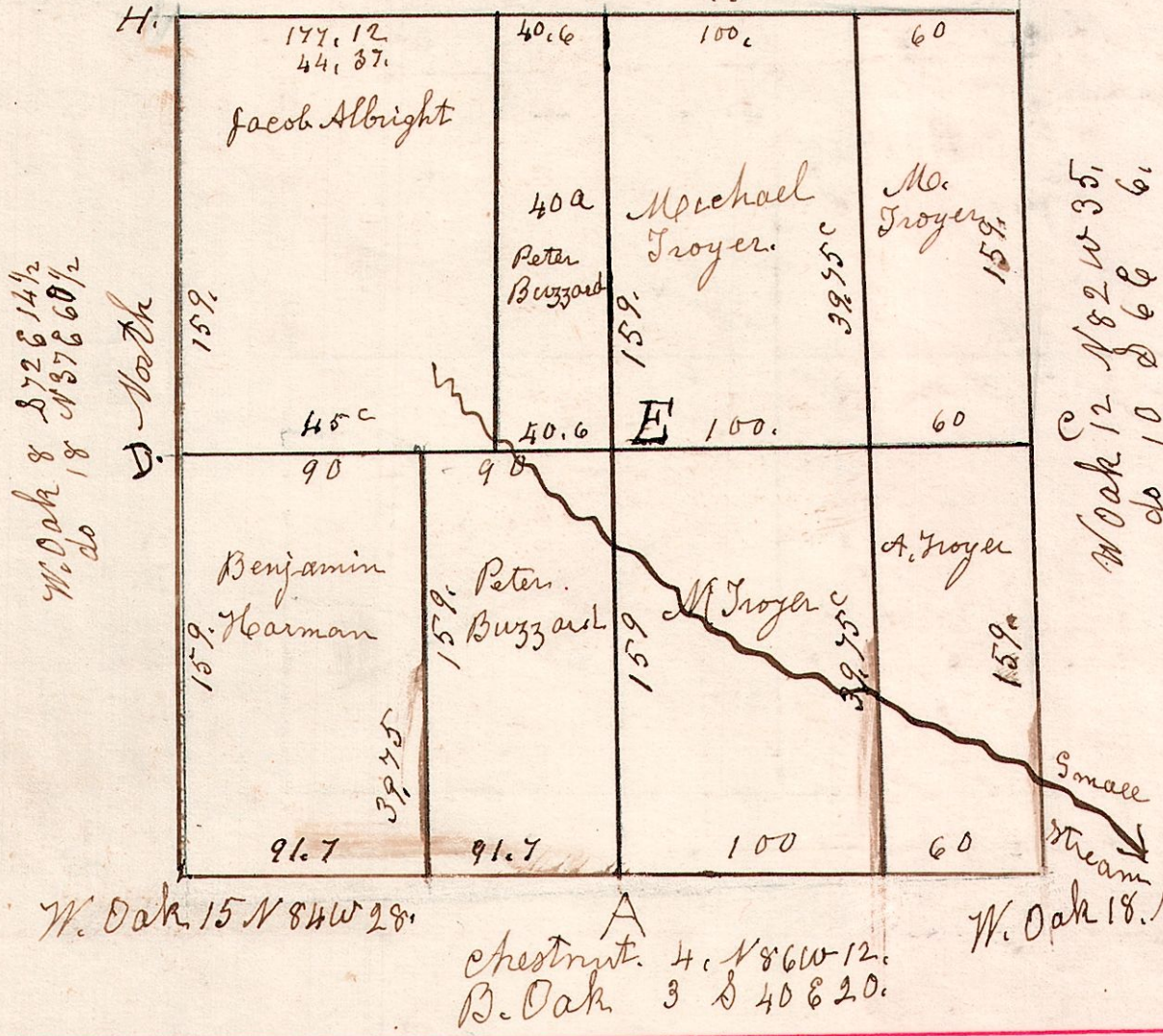


4.8.6

March 14th 1828. Surveyed Section No 6 in Sp 8 of R 4. in the following manner and for the following persons.

Surveyed Peter Bungard
40 acs April 13th 1853.

B. Oak 20 S 31 1/2 W 33
W. Oak 17 S 57 E 27
W oak 12 N 15 E 39
do 12 N 34 W 42

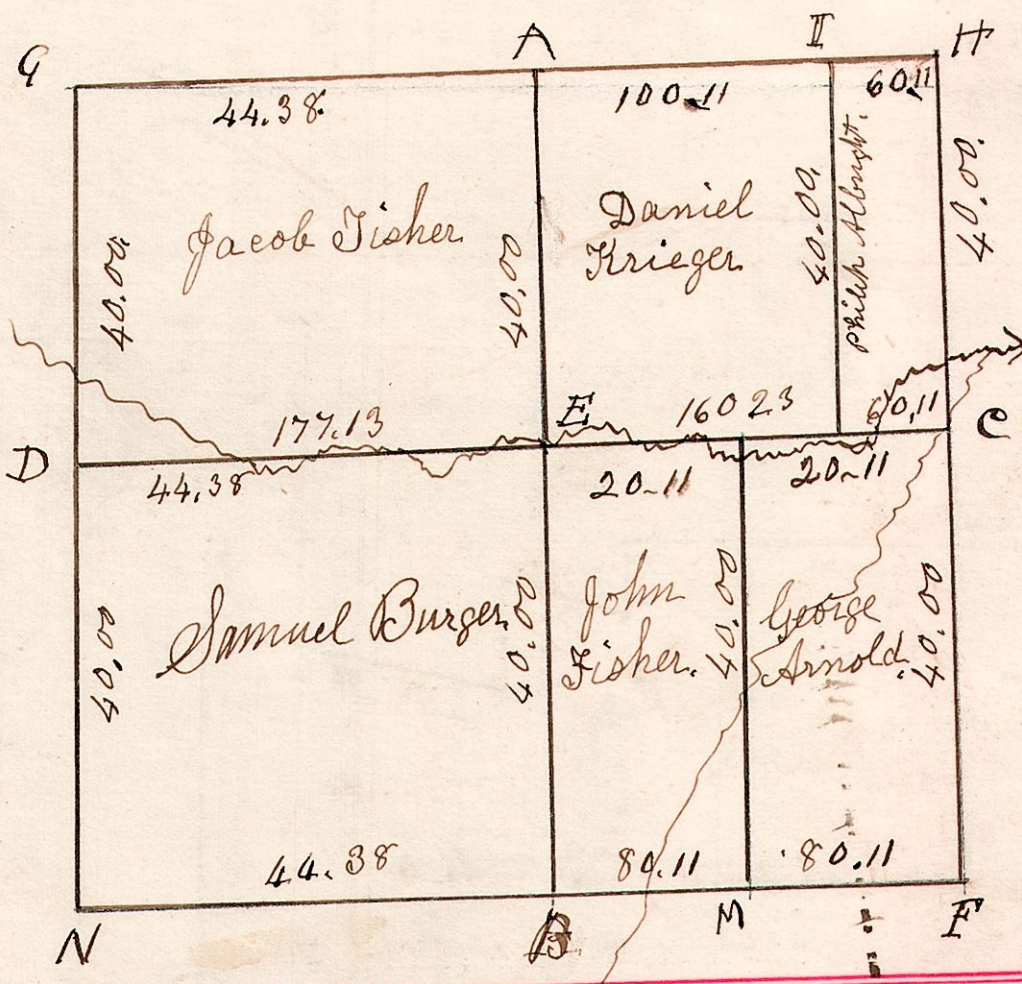


- H. W. Oak 15
- " B. Oak 3
- E Maple 13
- " W. Oak 30
- C. Stone 9th Diam
- H. B. Oak 3
- do 3
- I. post in field
- K. Chestnut 40
- " B. Oak 10

October 31st 1826, Surveyed Section No. 16. Sp 8, R 4. in the following manner.

4.8.16

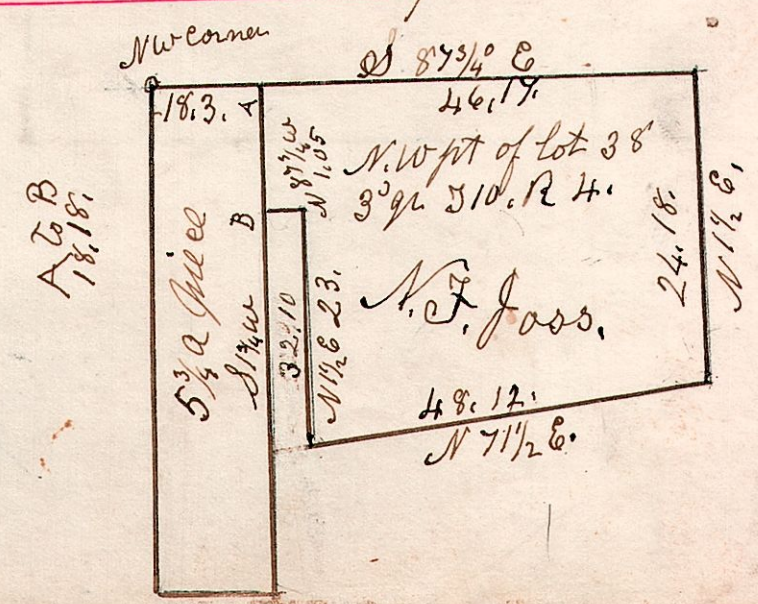
No 87.



- A 15 W. oak N 18 1/2 E 34.
- " 18 do S 17 W 60
- B 16 W. Oak S 55 W 59
- " 13 do S 69 E 44
- E 12 Cherry S 22 1/2 E 19
- " 6 Ash N 14 1/2 E 13 1/2
- C 8 W. Oak N 38 W 26
- " 12 Hickory S 75 E 29
- P 20 W. Oak N 4 W 26
- " 8 do S 72 E 32
- H 16 W. Oak East 14
- " 20 do N 48 1/2 W 59
- I 14 W. Oak S 17 W 6 1/2
- " 22 do N 73 W 13
- L 15 W. Oak S 40 W 17 1/2
- " 22 Linn N 41 W 27
- M 15 Maple N 43 W 9
- " 16 do S 59 W 14
- D 2 W. Oak S 2 W 48
- " 18 do S 48 E 64.
- F 20 W. Oak N 52 W 124.

4.10.38. 3rd q.

No 88.



March 7th 1872.