

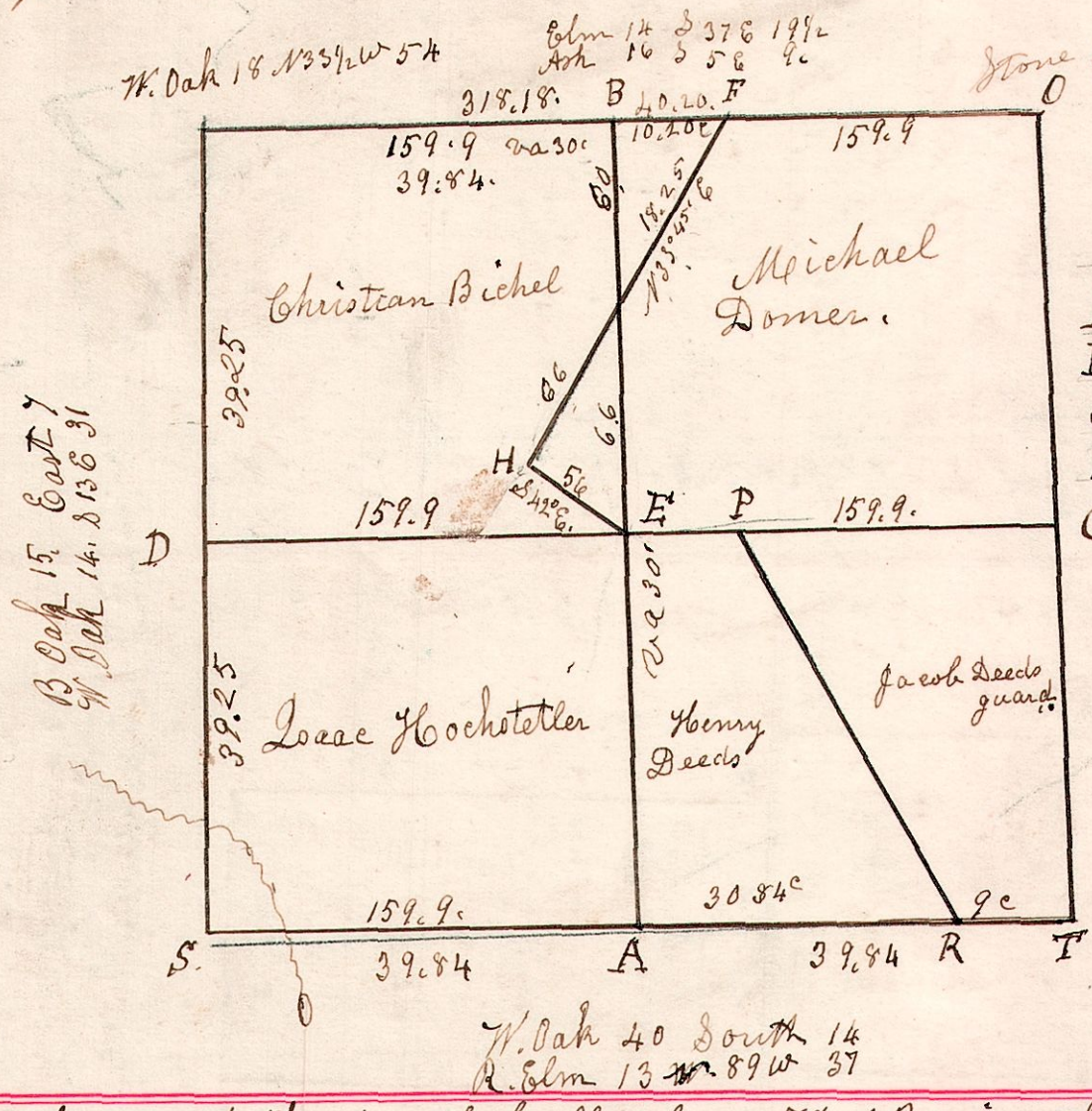
A-8.14.

March 13<sup>th</sup> 1828.

No 79.

Surveyed Section No 14 in T8. of R 4. in the following manner for the following persons:

Note. F, G, B has to be recorded with the N W q. G, H, E has to be recorded with the N E q. for M. Domez

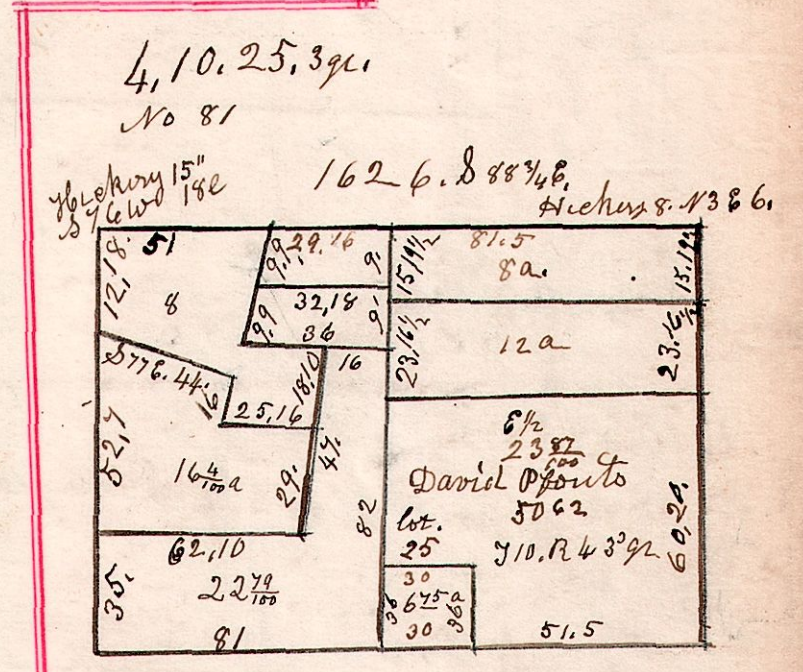
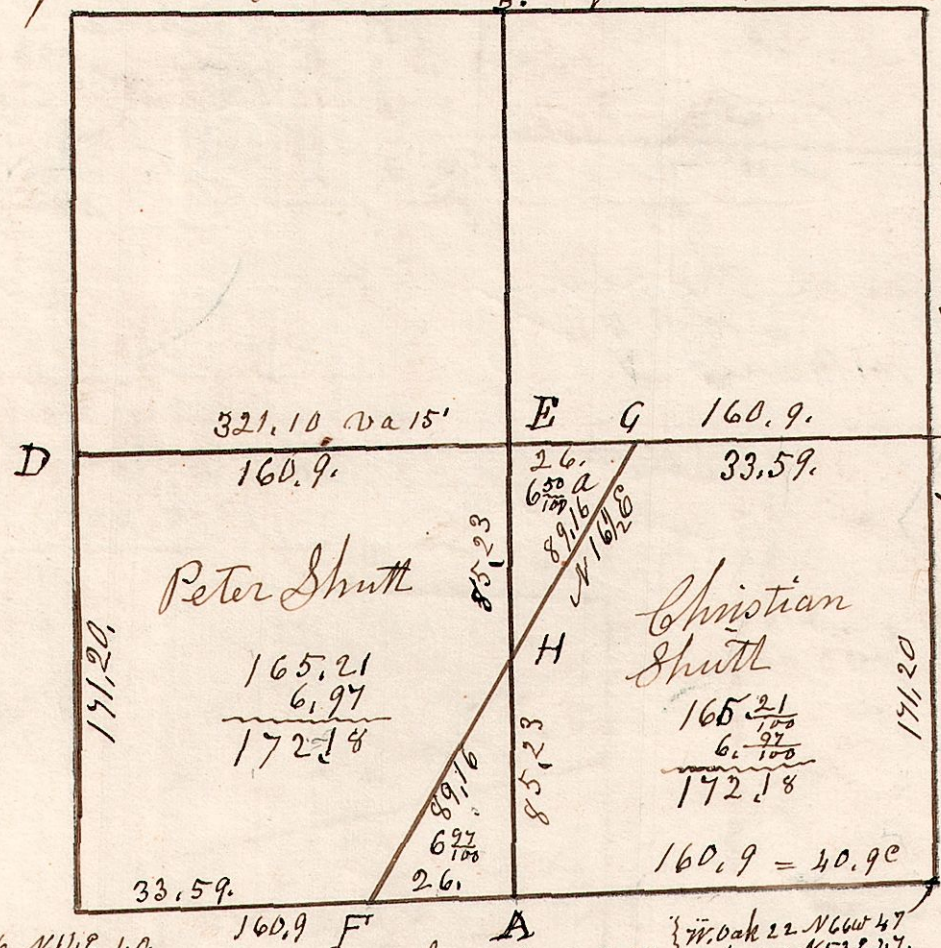


- F. W Oak 18 N 3 W 18 1/2
- E. do 20 N 81 E 28.
- F. Stone 9 in diam
- G. W Oak 20 S 34 W 42.
- H. Hickory 6. S 43 E 21
- W. Oak 36. N 43 W 22
- C. W Oak 15 S 72 E 37
- " do 20 N 67 E 34

A. 8. 4. Dec 15<sup>th</sup> 1830. Surveyed the South half of Sec 4. T8. of R 4 in the following manner and for the following persons.

No 80.

W Oak 20 N 55 W 18 1/2 do 18 S 39 W 40



Lot 25. 3<sup>rd</sup> q. T8. of R 4. April 3<sup>rd</sup> 1858.

W Oak 16 N 48 40 do 15 N 34 W 42.

W Oak 22 N 26 W 34 do 21 N 53 E 47. Hickory 16 S 67 W 18 1/2

E	Hickory 15 N 48 W 22	6.50	23.195
"	do 12 S 60 E 30.	40.9	23.345
F	Stone 15 the corner	46.59	46.590
H	Stone 16 the corner		
G	W Oak 22 N 26 W 34		
"	do 24 S 40 E 28 1/2		

N. B. The line from F. to G. is to be the partition line between the two tracts of land.