

N E q<sup>r</sup> Sec 2. T 8. R 4. May 2 1832.

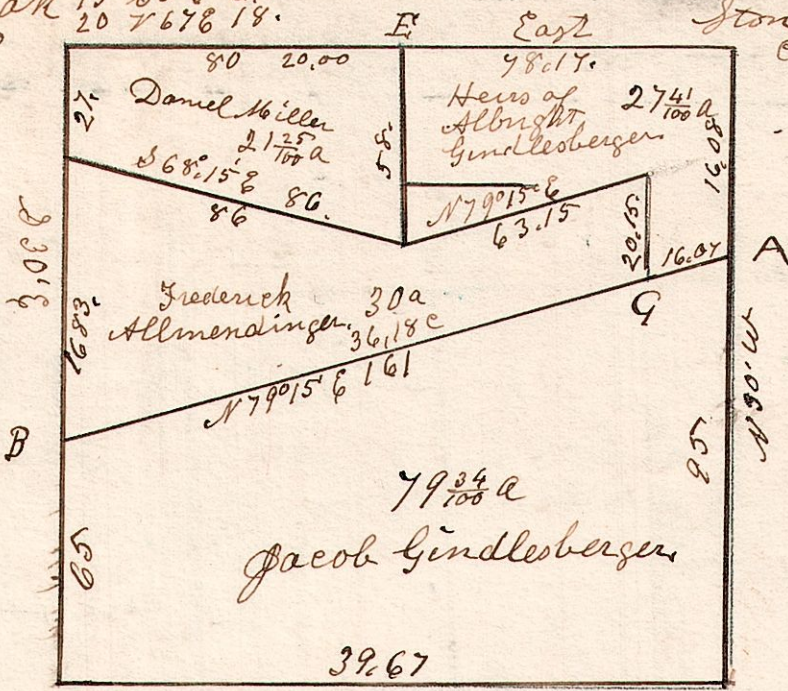
4-8-2.

No 77.

W. Oak 15 S 56 E 21.  
do 20 S 67 E 18.

Stone in the corner

- B. Maple 24 N 42 E 29
- do 3 S 9 E 12
- C W Oak 20 N 79 W 12 1/2
- do Maple 9 N 68 E 28
- D B Oak 16 N 83 E 37
- do W Oak 12 S 57 E 33
- E Maple 14 S 24 E 6 1/2
- do Ash 4 S 50 W 11
- F Stone 8 Corner
- G Sugar 18 S 60 W 25
- do 16 S 88 E 14



W Oak 30 N 83 E 63.  
Maple 15 S 80 W 27.

W Oak 30 North 15.  
do 20 S 38 W 9.

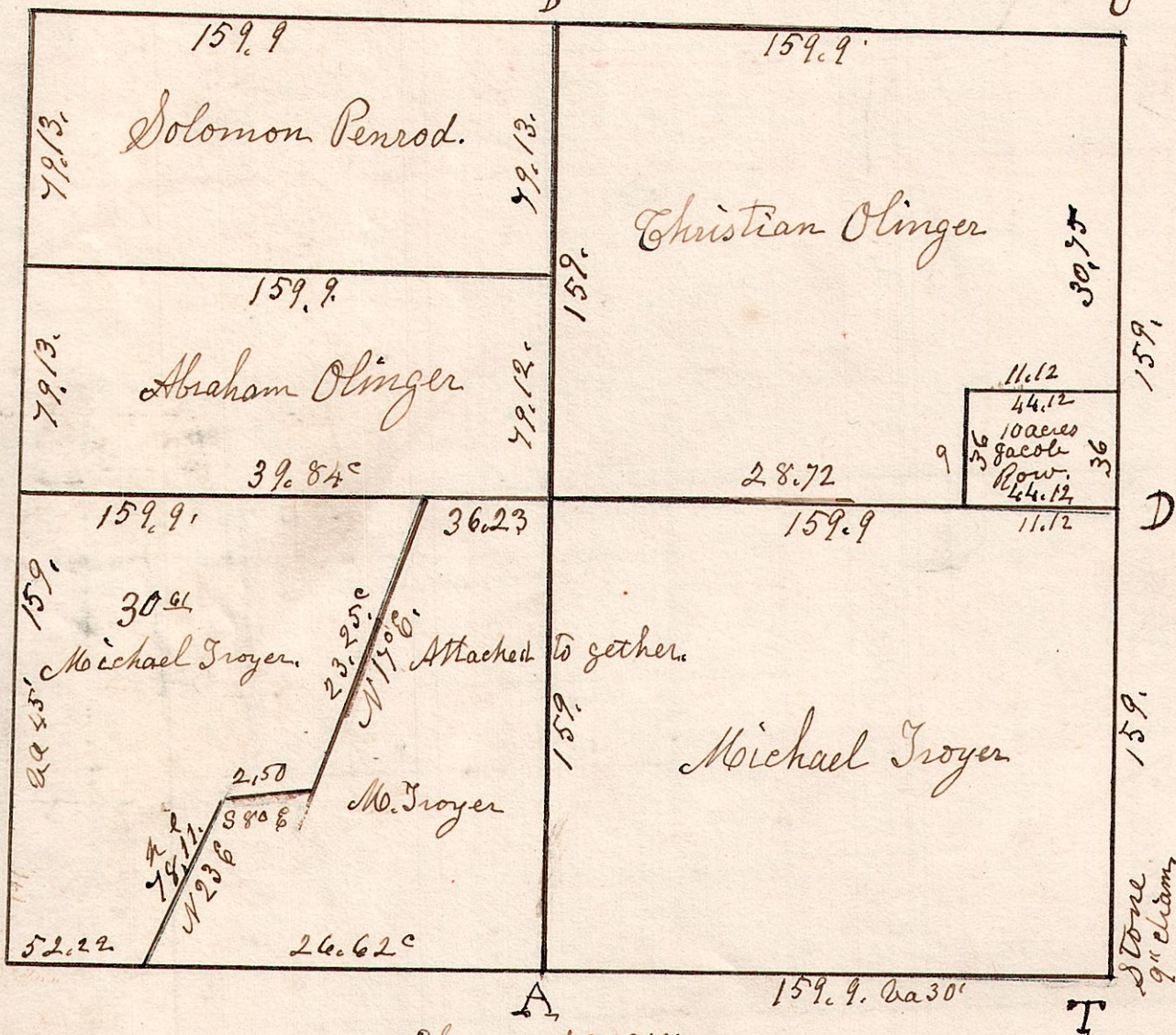
4-8-7.

August 10<sup>th</sup> 1828. Surveyed Section No 7 in Sp 8 of R 4. in the following manner and of the following persons.

No 78

W Oak 12 N 15 E 39.  
do 12 N 34 W 42.

Hickory 15 S 65 W 19.  
W Oak 16 S 20 E 71.



W Oak 18 N 33 E 45 1/2

Elm 14 S 37 E 19 1/2  
Ash 16 S 58 E 9.

- |    |                      |    |                          |
|----|----------------------|----|--------------------------|
| C  | W. Oak 12 N 82 W 35  | G  | Hickory 15 N 80 W 6      |
| do | 10 S 6 E 6           | do | W. Oak 36 S 4 E 34       |
| D  | B. Oak 12 S 4 W 10   | H  | Maple 15 S 20 E 23       |
| do | 10 S 31 E 16         | I  | Stone corner             |
| E  | Gum 9 S 65 E 6       | K  | Hickory 15 S 21 W 11 1/2 |
| do | Hickory 18 N 52 E 12 | M  | Stone corner             |
| F  | W. oak 8 S 70 E 42   | N  | Stone corner             |
| P  | Hickory 10 S 49 W 53 | R  | W Oak 18 S 31 E 47.      |
|    | Stone corner         |    |                          |