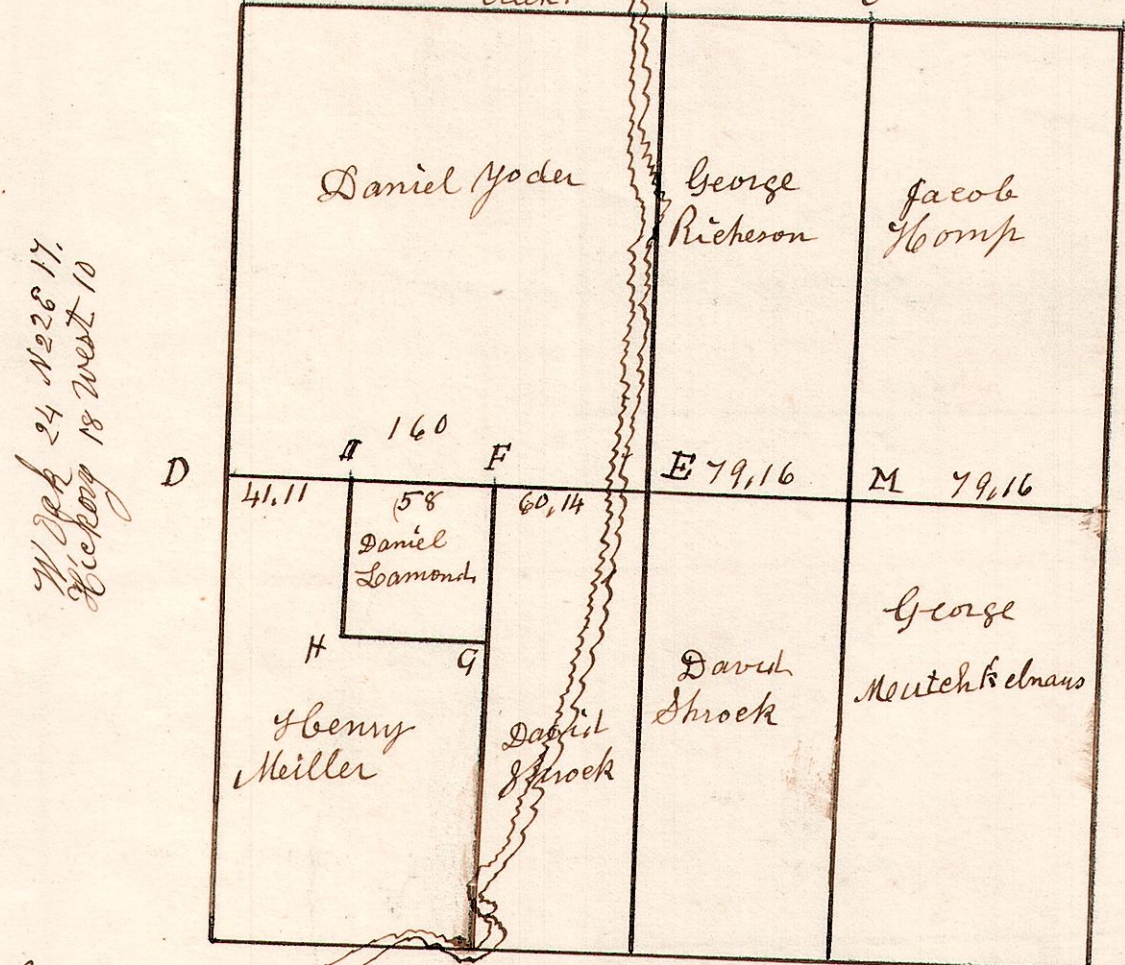


4. 9. 14.

May 4<sup>th</sup> 1832 Surveyed Section 14 in T 9 of R 4. in the following manner and for the following persons.

No 75.

Ironwood 7 N 60 E 22.  
do 8 S 82 W 29.  
Beech 12 North 3.  
Sugar 14 East 11  
Hickory 18 S 17 E 10.  
B. Oak 8 N 17 W 30.



W. Oak 24 N 22 E 17.  
Hickory 18 West 10

B. Oak 4 N 68 E 6.  
do 4 N 34 W 14.

N 4 S. 218 E.

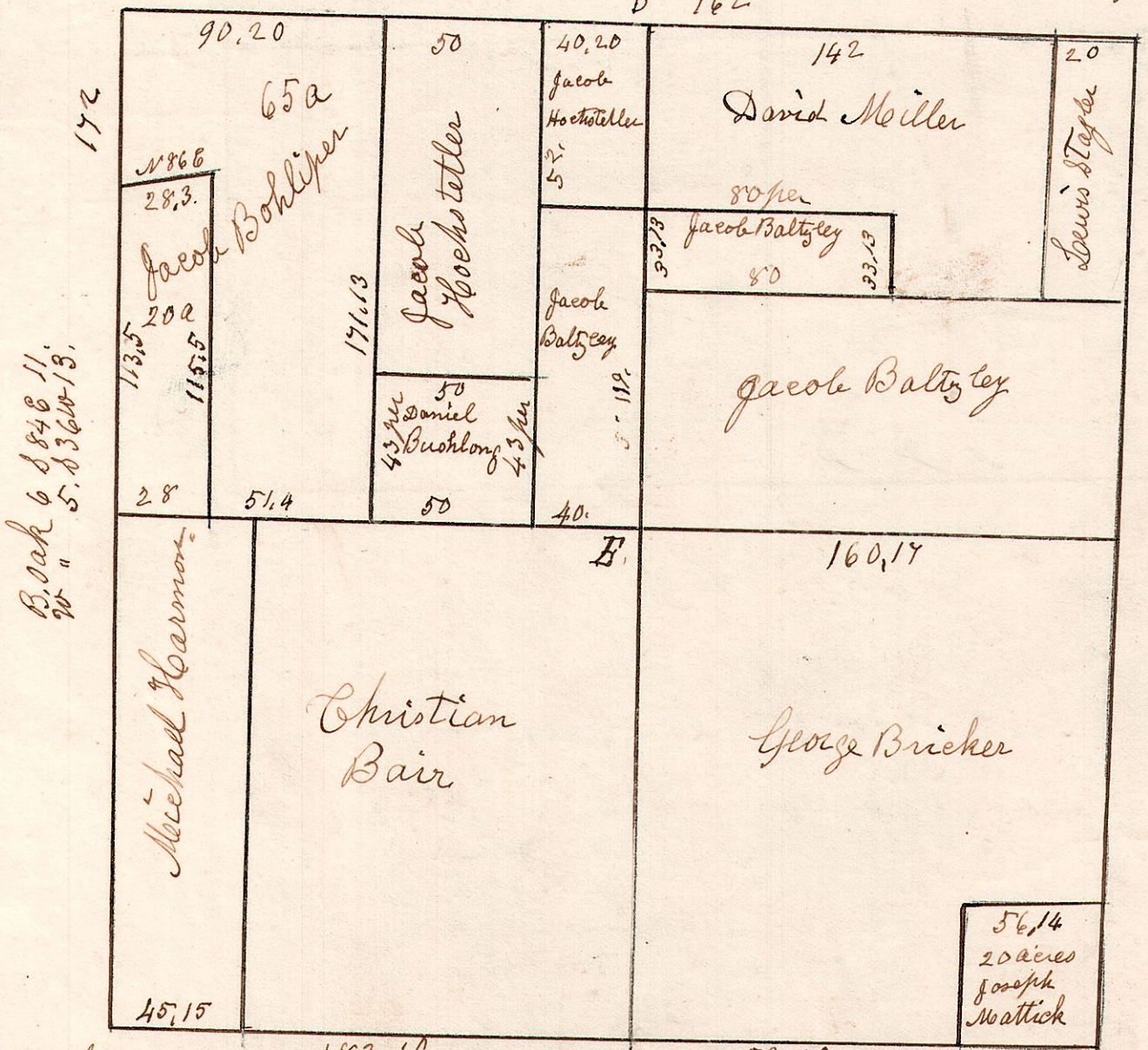
- D 15 N 42 E 14. Cherry
- " 9 N 70 W 9. Hickory
- H 12 N 17 W 23 W. Oak
- " 3 S 65 W 4 Sassafras
- G Stone the corner
- "
- F 15 S 42 W 10 Hickory
- " 6 N 85 E 19 Beech
- K. 25 S 76 E 23 Elm
- " 6 S 87 W 41 Ash
- L 12 N 65 W 20 Hickory
- " 15 N 50 E 41 W. Oak
- M 3 S 8 E 21 Walnut
- " 5 N 16 W 25 do
- E W. oak 20 S 50 W 18.
- L. Maple 16 East 40.

Gum 10 S 18 E 20  
Hickory 7 N 72 W 19.  
W. Oak 16 S 77 W 12  
Hickory 14 N 83 E 18.  
W. Oak 16 S 75 W 25.  
do 8 N 80 E 44.

4. 5. 5  
No 76

May 30<sup>th</sup> 1833. Surveyed Section 5 in T 8 of R 4. in the following manner and for the following persons.

Hickory 12 S 27 E 56  
do 4 N 54 E 24  
Hickory 12 S 16 W 10.  
do 7 N 2 E 13.  
B 162  
Chestnut 36 East 20  
Hickory 6 N 11 W 26.



B. Oak 6 S 84 E 11.  
do 5 S 36 W 13.

S. W. Oak 24 N 9 W 18  
do 20 S 41 W 40

W. Oak 24 East 18.  
Hickory 18 N 88 W 21.  
Chestnut 24 N 80 W 21  
W. Oak 14 East 52.  
W. Oak 12 N 16 E 41  
Maple 20 S 6 W 76

Chain Carriers,  
John Burkert &  
Henry Stamee

Stones planted at all the corners, (average in size from 6 to 12 inches. 20 acre piece S W pt. of W 1/2 of NW 1/4, same Aug 15<sup>th</sup> 1867.