

4. 9. 7.

March 24th 1832. Surveyed Section 7 in T 9, R 4 in the following manner & for the following persons.

No 56

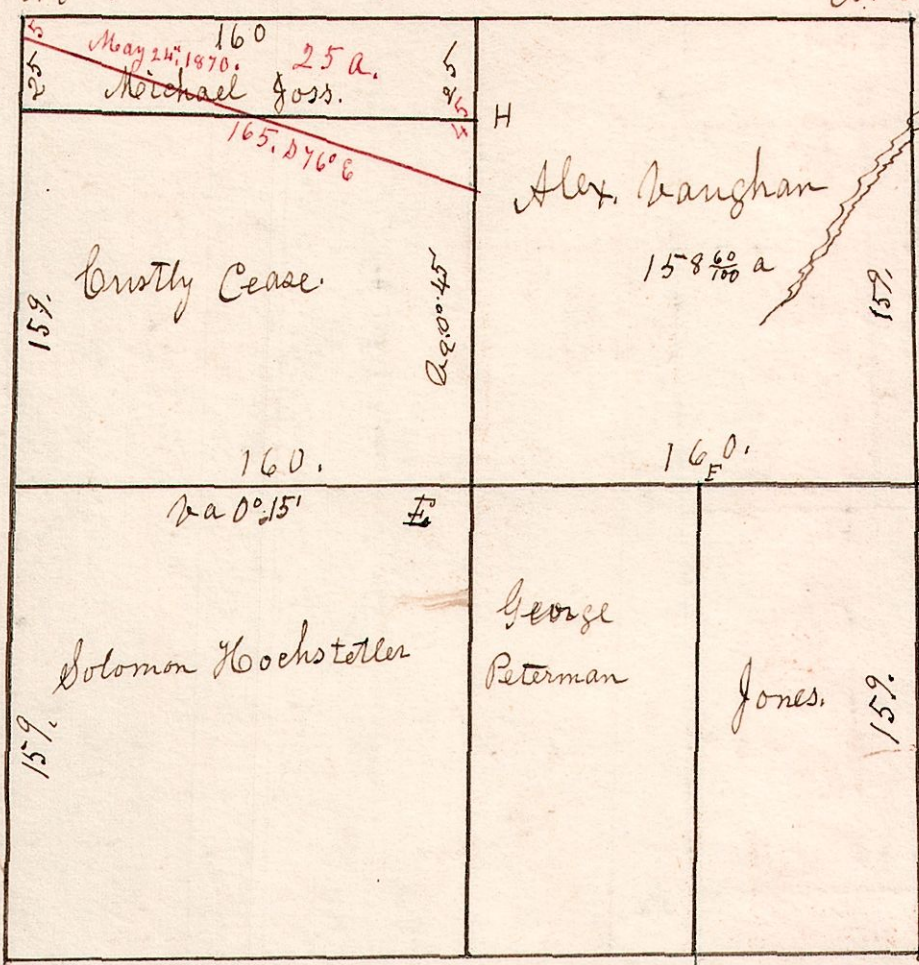
W. Oak 14. S 65W 22.
Maple 12. N 63 E 34.

W. Oak 10. S 12W 20.
do 14. N 43 E 30.

ash 14. S 70° E 10.
elm 13. N 40 W 44.

317,05

W. Oak 20. South 53.
Beech 15. N 66 26.



- | | | | |
|--------------|----|--------|-----|
| E. W. Oak | 15 | N 14 W | 13 |
| do | 18 | South | 13 |
| do | 16 | S 43 E | 14 |
| E. W. Walnut | 14 | N 67 W | 31 |
| G. W. Oak | 12 | N 81 E | 26 |
| do | 14 | S 11 E | 3.6 |
| do | 18 | N 63 E | 16 |
| do | 6 | N 41 W | 31 |
| H. W. Oak | 40 | S 56 E | 26 |
| do | 16 | S 86 W | 15 |

Sugar 18. N 18 E 11. Beech 24. S 58 W 26. G
Hickory 12. S 34 E 55. do 16. N 44 E 53. 159, 16.

Stone the corner

4. 9. 6

Dec 6, 1839 R 4.
February 10th 1858.

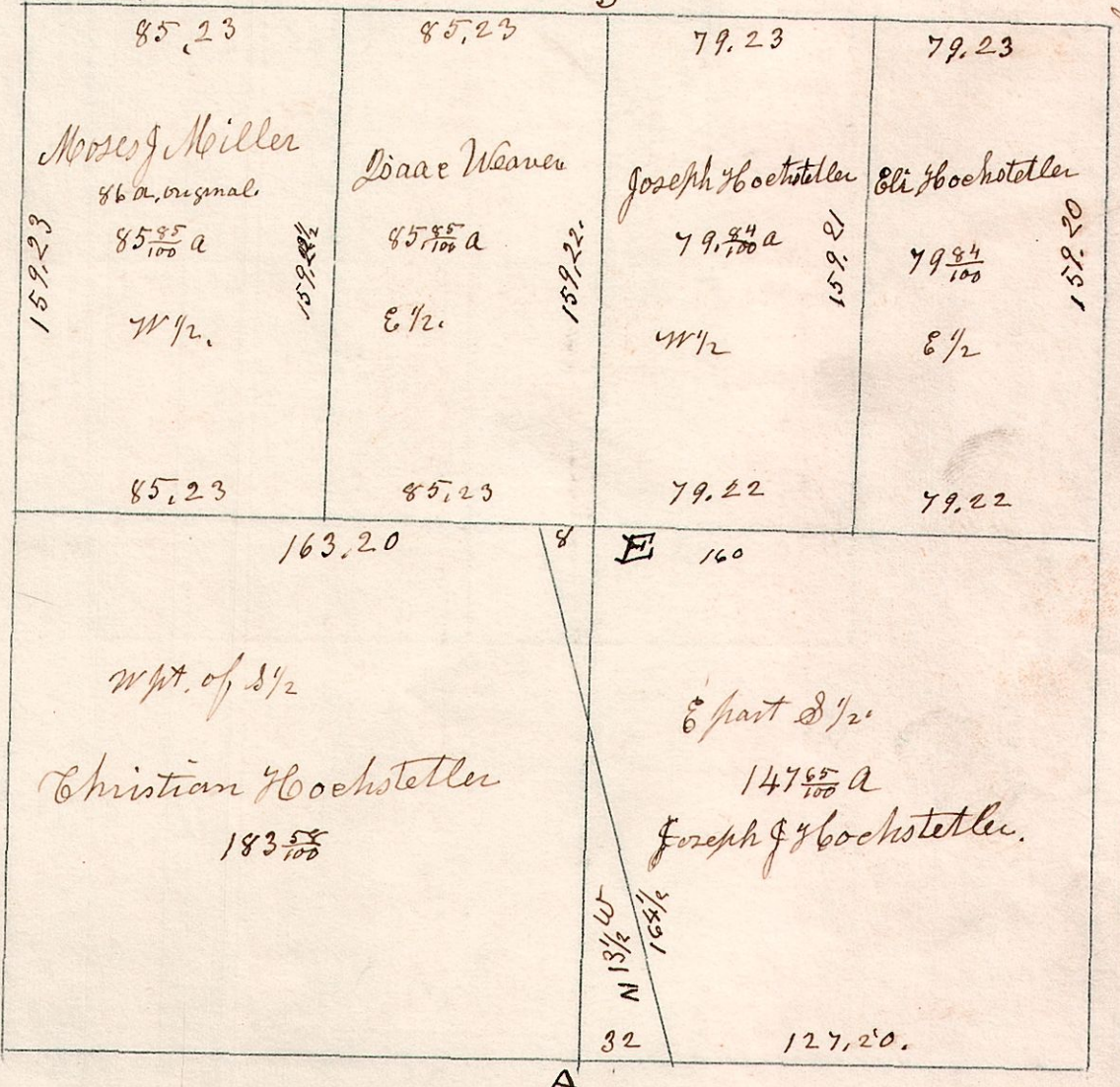
No 57.

W. Oak 30. S 65 E 7.
Maple 12. N 41 W 27.

Hickory 4. S 85 E 11.
W. Oak 7. S 64 W 35.

W. Oak 20. S 25 W 6.

W. Oak 18. S 58 E 12.
do 15. N 89 W 30.



W. Oak 18. S 65 W 22.
Maple 14. N 65 E 34.

Beech 16. N 18 E 26.

Sugar 17. N 18 E 11.
Hickory 12. S 34 E 55.

Hickory 6 S 7 W 6.
W. Oak 6 N 27 E 26.

E. W. Oak 16 N 43 E 36.
W. Elm 15 N 27 W 43.