

4.8.17.

March 21st 1837 Surveyed Sec 17th in T8. of R 4. in the following manner for the following persons.

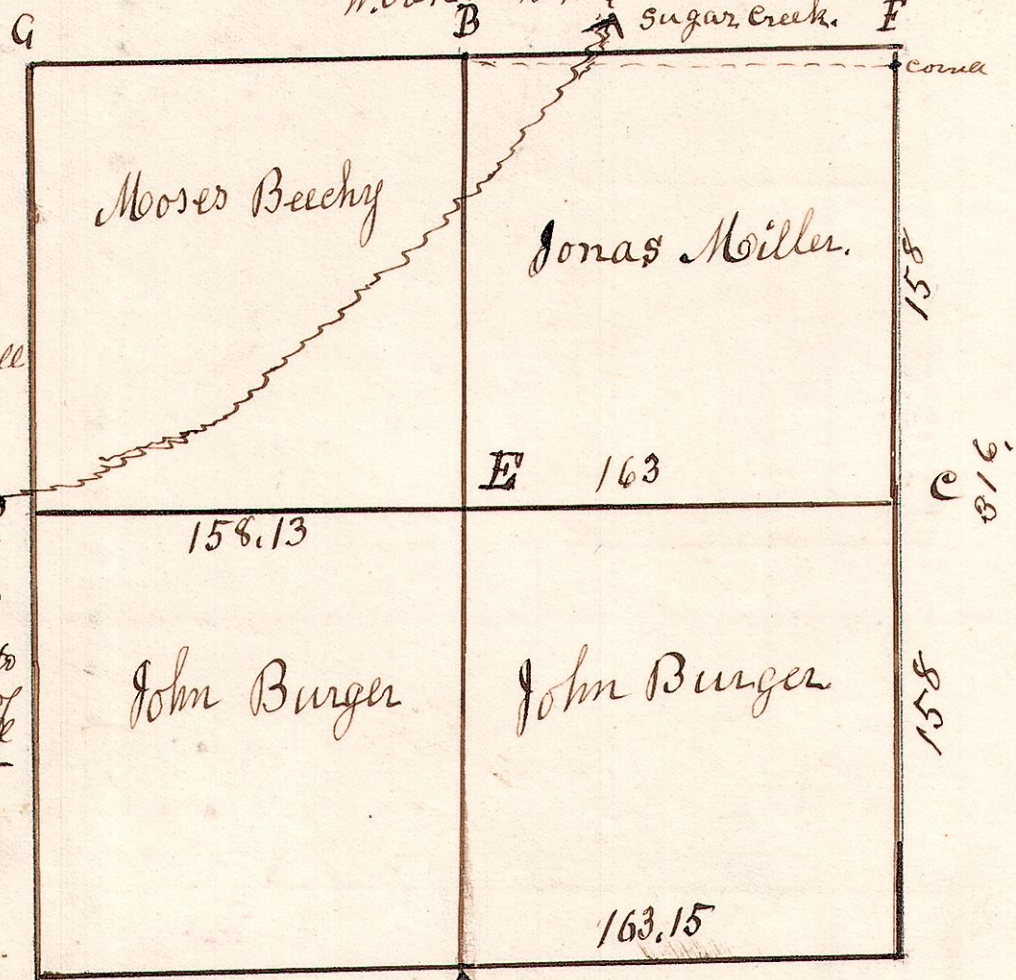
No 45

elm 12. N 86 W 29.
W. Oak 15. S 72 E 39.
Sugar Creek. F

A straight line from C to F (passing by B) strikes 3/4 north of the original corner, caused by a bad swamp between B & F.

From G to B. the line will run East
From B to the original corner at F it will run S 89 1/2 E

From D to C a straight line will run S 89 1/2 E, but to set the corner at E agreeable to the line on the north of said section it will run from D to E. East from E to C. S 89 1/2 E.

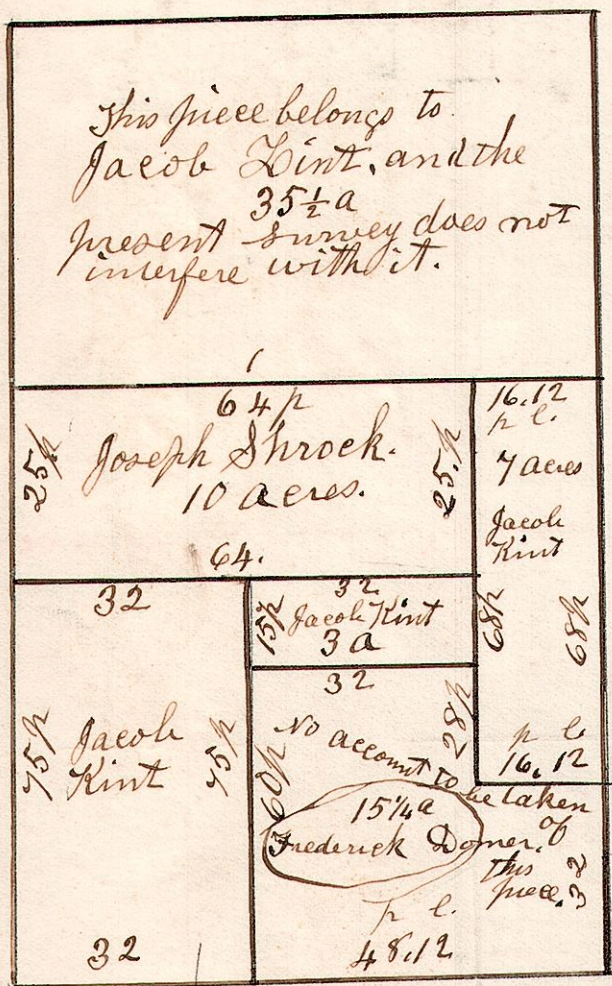


W. Oak 15. N 77 E. 50.
do 30. S 77 W 98.

4.8.4.

E 1/2 NW qr Sec 4, T8, R4
December 22- 1840.

No 46.

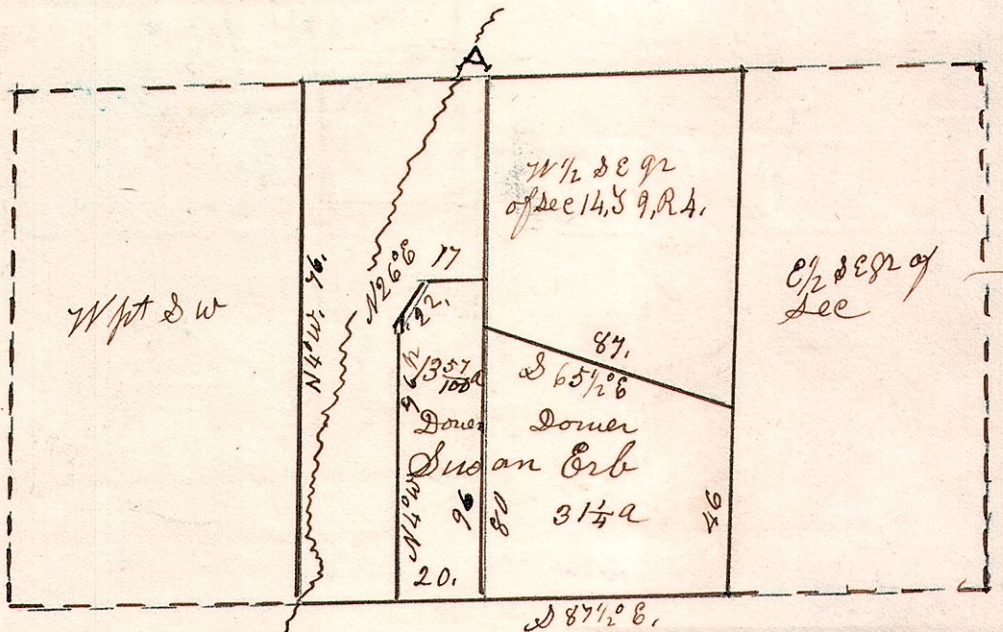


E 1/2 of the NW qr of Sec 4, T8, R4.
N.B. Jacob Hint's 3 pieces contains 25 acres, all to be taken in one survey.
Plat made and delivered to Jacob Hint.

4.9.14.

March 30th 1848.

No 47.



Erb survey 1848.
A. Saw mill on 1 acre piece described in the west corner of NW qr of Sec 14 T8, R4.
45 acre dower for Susan Erb.
March 30th 1848.

Elias Hochstetler } 1 day each.
Benjamin Miller }
Solomon Reim }

Plat made and delivered.