

11.15.31.

No 23

T15. R11.
H Pounds.

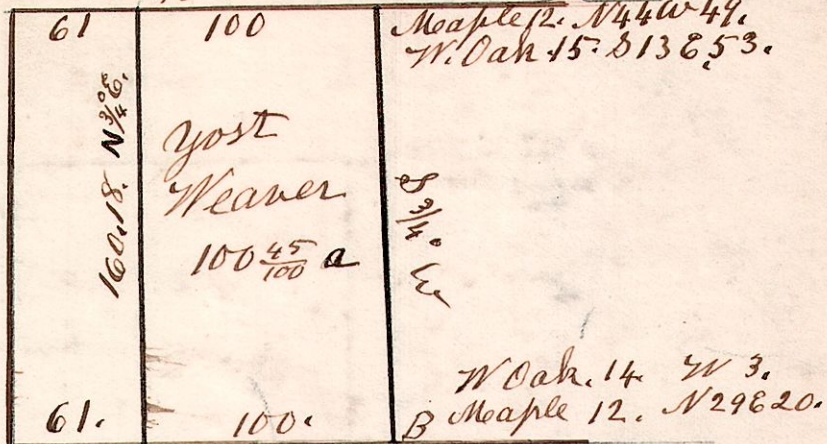


S W 1/4 of
Sec 21 T15 R11.
March 28 1873.

11.15.31.

No 24.

Sec 31. T15 R11.
S 89 1/2 E



W Oak 12. N 2 W 20.
Dogwood 12. S 30 W 19.
April 4 1872.

May 25 1830 Surveyed Section 3 in T15. of R11. in the following manner and for the following persons.

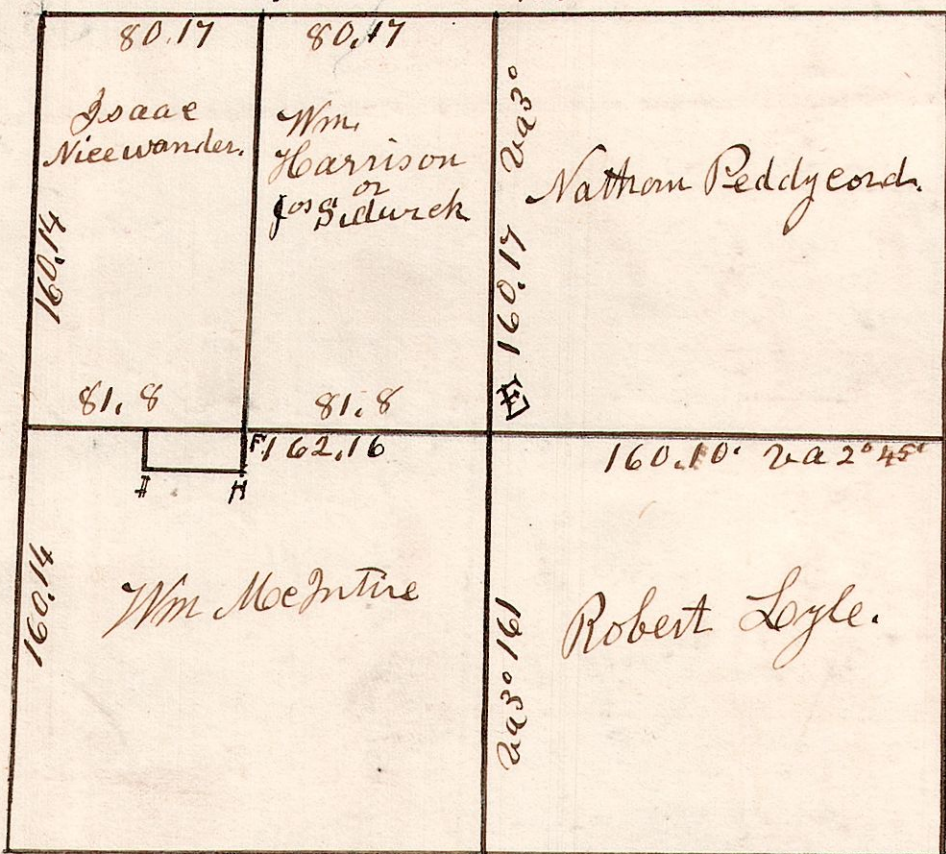
11.15.3.

Hickory 15. S 48 W 26.
Poplar 24. N 77 E 16.

Lynn 15. S 80 E 42.
Hickory 20. N 51 W 57
161.10

No 25.

W Oak 15. S 11 E 27.
Hickory 15. S 36 W 23.
321.3



W Oak 5. S 64 W 20.
Hickory 8. N 9 E 39.

- E. Hickory 16 N 60 E 16.
- do 5 N 36 W 5.
- F. Chestnut 15 N 36 W 14
- B. Oak 18 S 61 E 22.
- G. W. Oak 22 S 31 W 13
- H. Hickory 15 N 86 E 44

F.H. II. is 40 p E & W. and 4 p N & S.
and belong to Isaac Nicewander.

Hickory 20. S 9 E 20.
Lynn 12. N 42 W 27

Poplar 24. N 16 E 42.
Chestnut 10. S 33 W 20.

11.14.6

Surveyed the N 1/2 of Sec 6. in T14. of R11. Dec 11 1838.

No 26.

