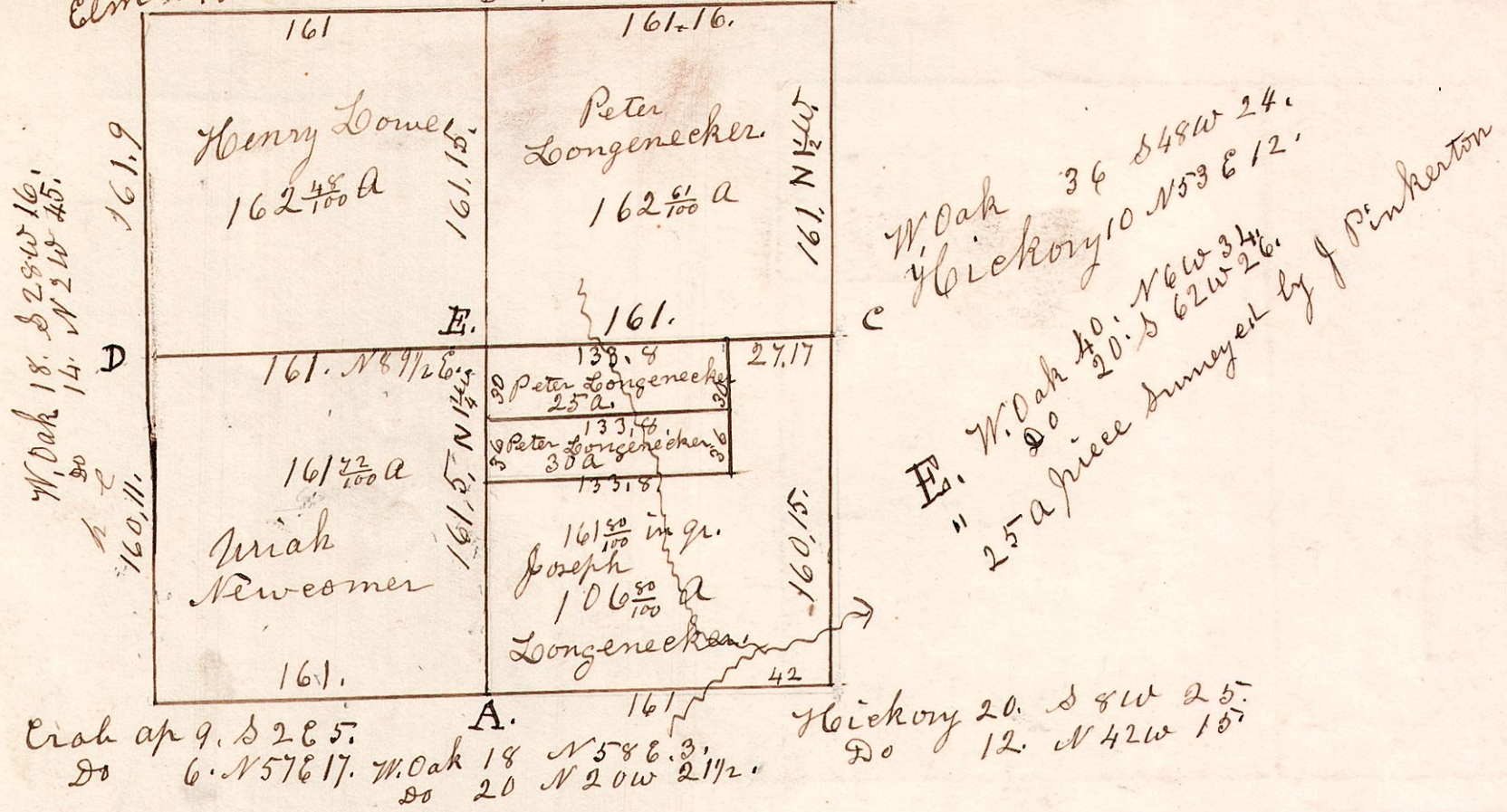


11.15.34.

No 17. Dec 34. Sp 15. R 11. Surveyed March 19th 1857.

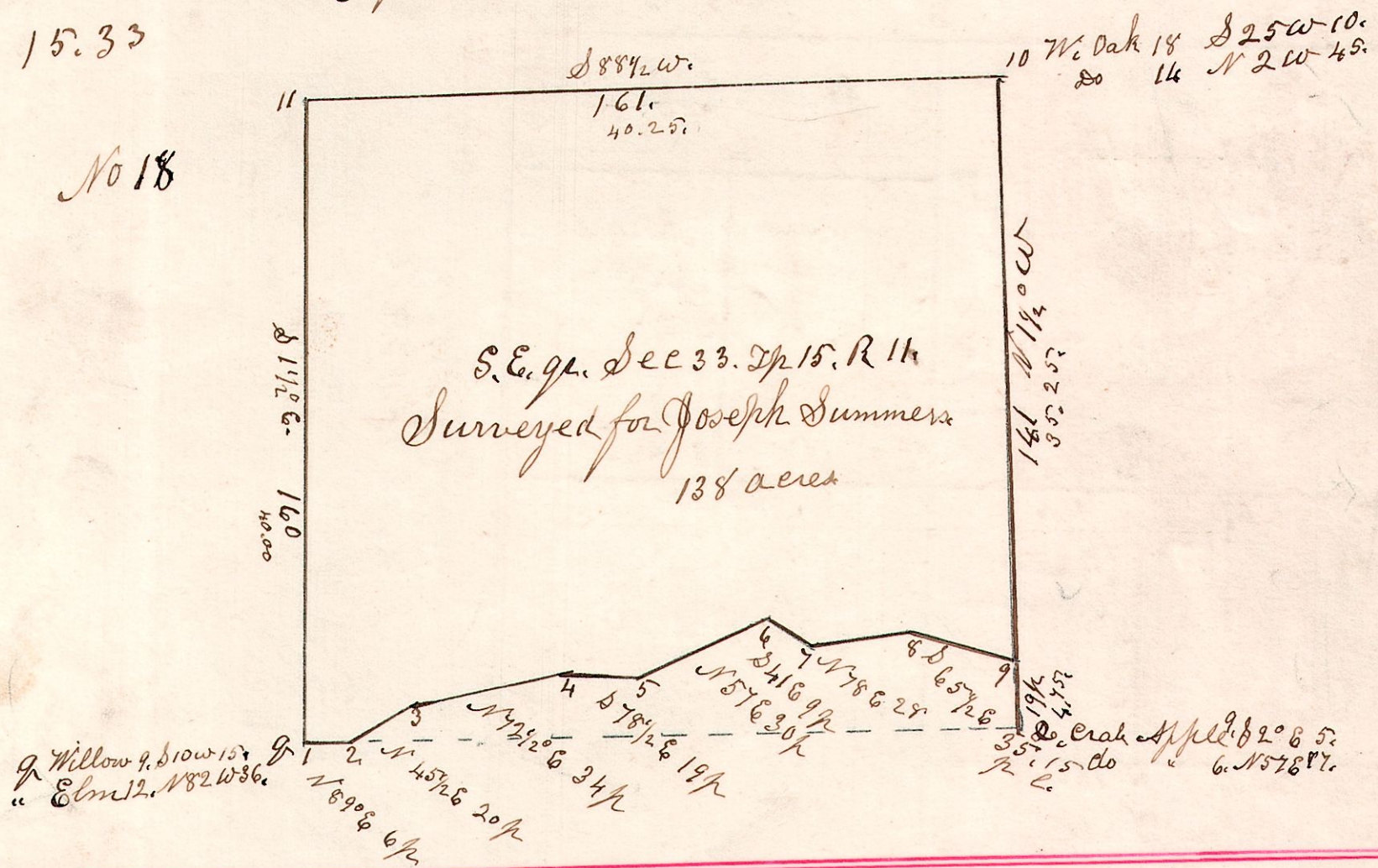
Cherry 10. S 40 E 9. Elm 10. N 15 W 6. W. Oak 42 N 82 E 42. do 15 S 60 W 38. Hickory 24. N 25 W 29. W. Oak 18. S E 16.



April 12th 1853.

11. 15. 33

No 18



11.15.33.

No 19.

