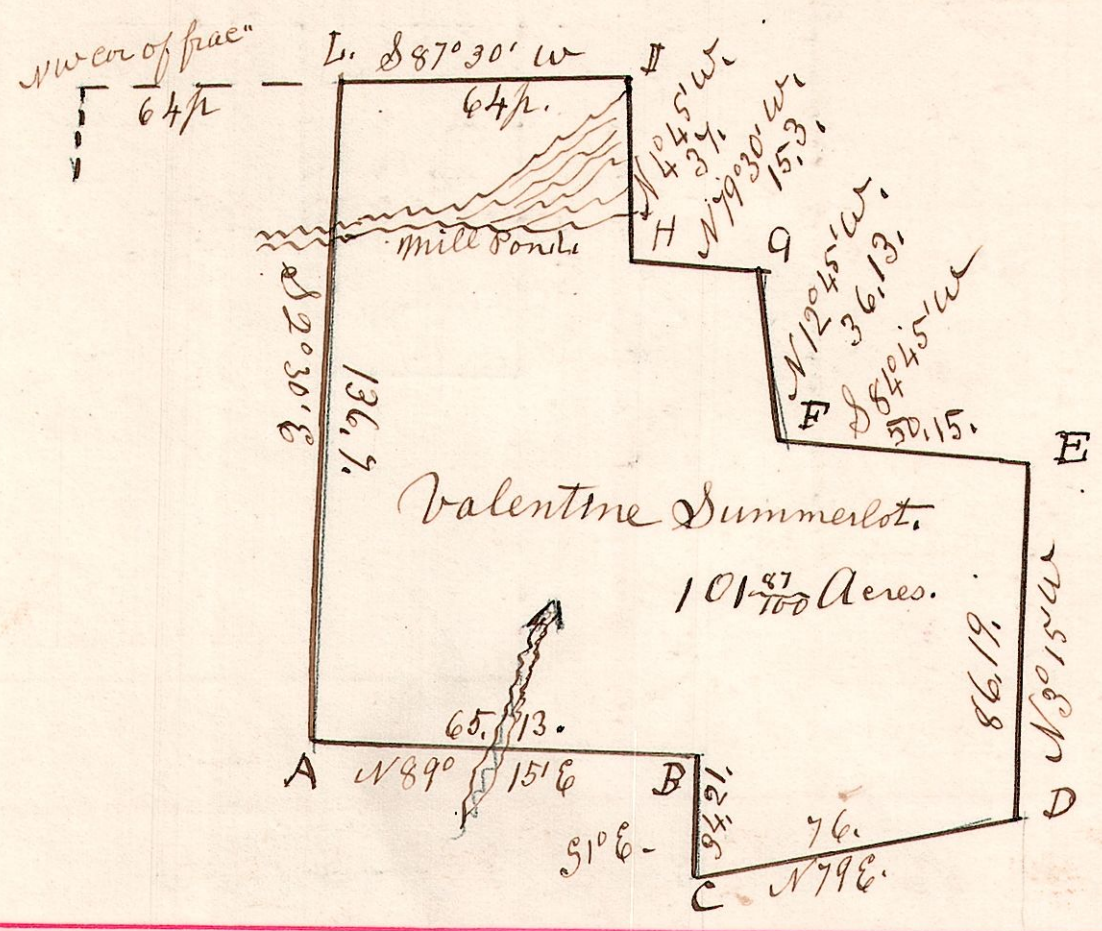


No 11.
11.14.3.

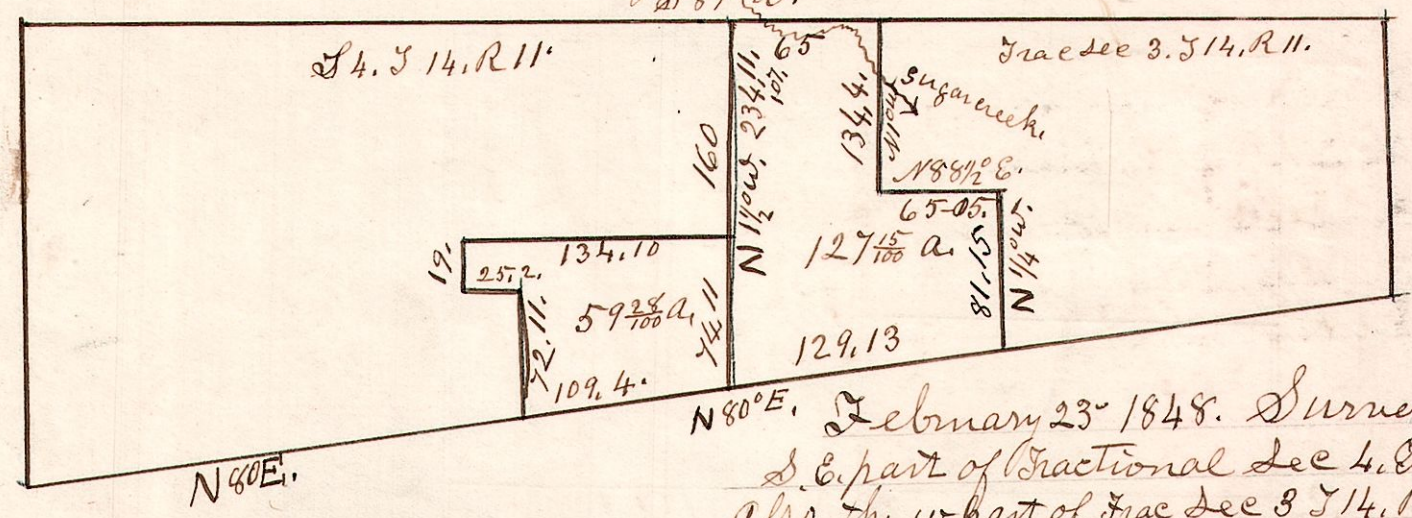
March 18th 1829. Surveyed part of Fraction (or Section)
3 in T14 of R11. for Valentine Summerlot.



- A. W. Oak 24 N79E 21.
- B. do 30 N41W 29
- C. do 25 S61W 19
- D. do 15 N89E 12
- E. Ash 8 S53W 30
- F. Maple 16 N81W 41
- G. Sugar 15 S80W 23
- H. Maple 24 S64E 49
- I. Hickory 12 S23W 10
- L. W. Oak 15 S49 1/2 E. 16 1/2
- " do 18 S8E 16 1/2

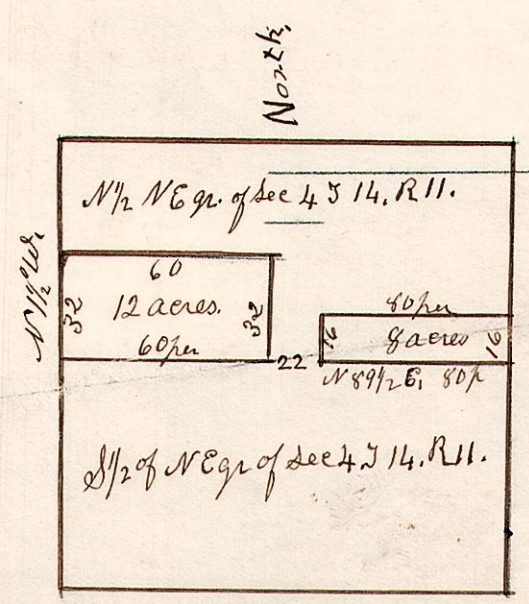
11.14.3+4.
No 12.

Feb 23rd 1848. part of Frae S344. T14. R11.
Peter Bixel and Henry Harrold
S89W.



February 23rd 1848. Surveyed the
S.E. part of Fractional Sec 4. T14. R11, as above.
also the W part of Frae Sec 3 T14. R11. as above
a stone planted at each corner.
Surveyed for Henry Harrold.

11.14.4.
No 13.



The 12 acre piece is pt of N 1/2 of Sec 4 T14 R11.
The 8 acre piece is pt of N 1/2 of Sec 4 T14 R11
Surveyed for George Mumma
March 19th 1857.