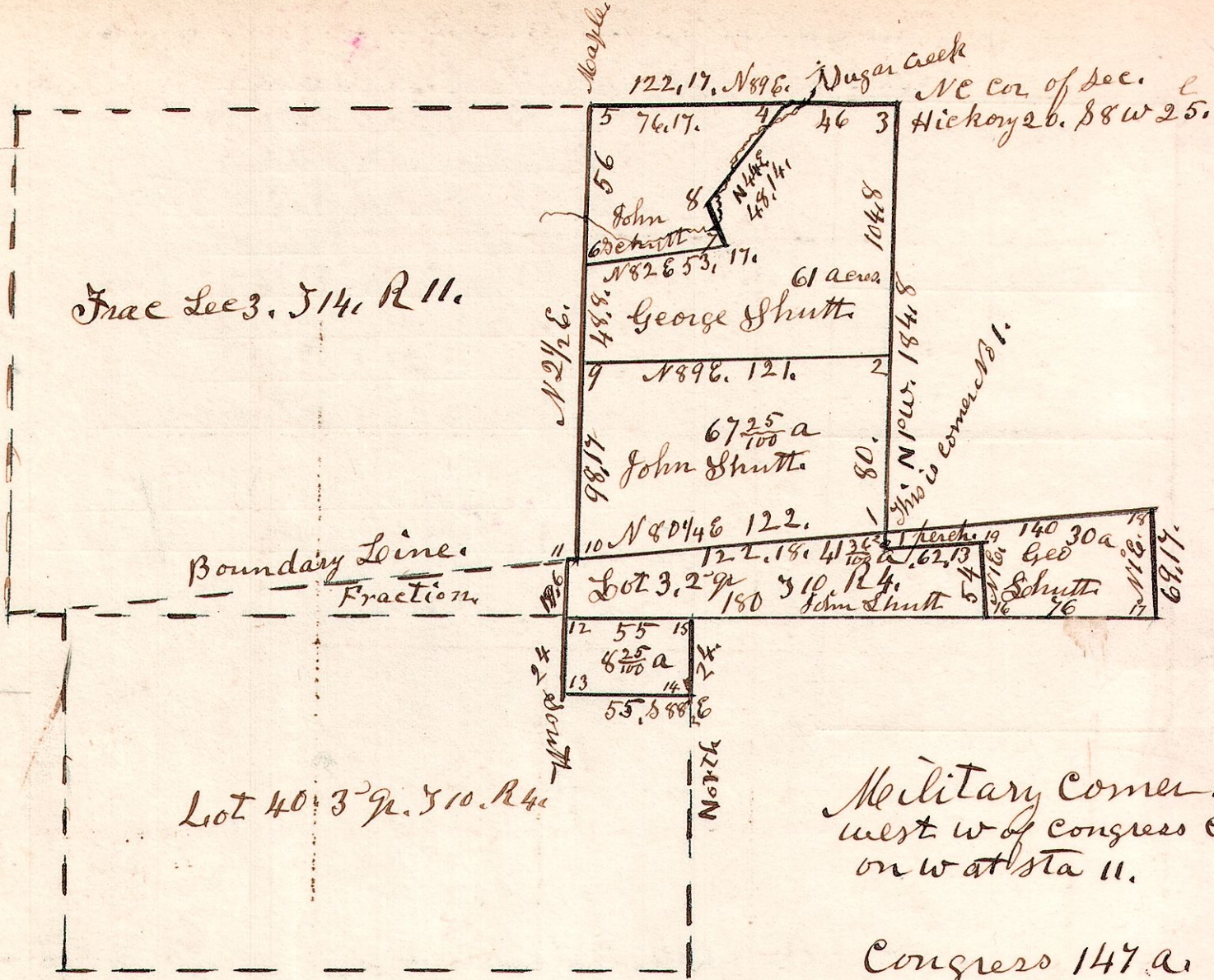


11. 14. 3

No 4.



4-10-40. 3<sup>qr</sup>

Lot 40 3<sup>qr</sup>. 510. R 11.

April 17<sup>th</sup> 1852. Surveyed the above Plat made and delivered.  
56 from Sta 9. to A.  
42/15  
98-15

Military Corner 18 links west w of Congress corner on w at sta 11.

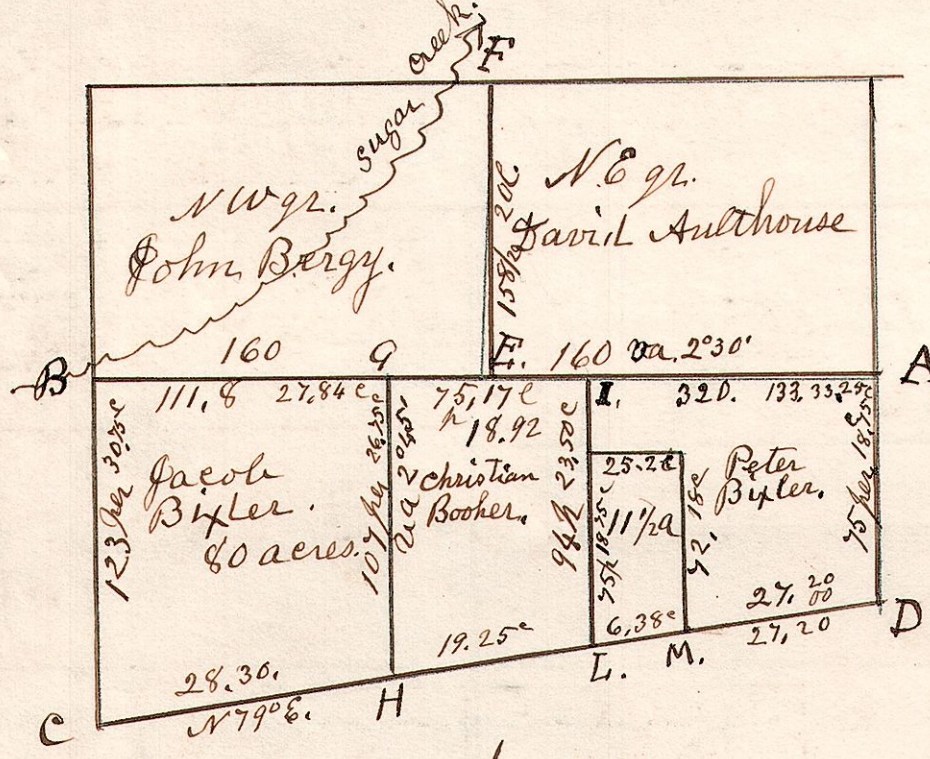
Congress 147 a.  
Military Lot 40 3/4 a.  
John Shutt has 266

11. 14. 4.

No 5

Feb 19<sup>th</sup> 1830. Surveyed fractional Section No 4. Tp 14. R 11. in the following manner, and for the following persons.

- C. Quakerap 18, N20W 22.
- " W. Oak 12 East 11.
- D. W. Oak 11 N59E 52.
- " Dogwood 9 N82W 22.
- E. W. Oak 20 N82W 19.
- " do 12 S 57E 8.



- A. W. Oak 24 N43E 57.
- " do 20 S 60E 38.
- B. Cherry 12 N34W 37.
- " S. W. Oak 18 S 50W 25.

- F. Elm 12, N82W 36.
- " Sugar 8. S 30W 23.
- G. Quakerap 15. S 88W 11.
- " Maple 12. S 81E 21.
- H. R. Oak 5. N50W 7.
- " Chestnut 5. S 50E 8.
- I. B. Oak 15, N76W 30.
- " do 12, S 76E 16.
- L. Chestnut 16, N74W 19.
- " Hickory 8. S 19W 23.

- M. Chestnut 16, N24E 29.
- " Hickory 6. N76 20.
- N. B. Oak 16. S 12W 23
- " do 12. N76 20

L.M.N.O. belongs to Rudolph Witner

Corners G, E, H. set on Hendersons Line.