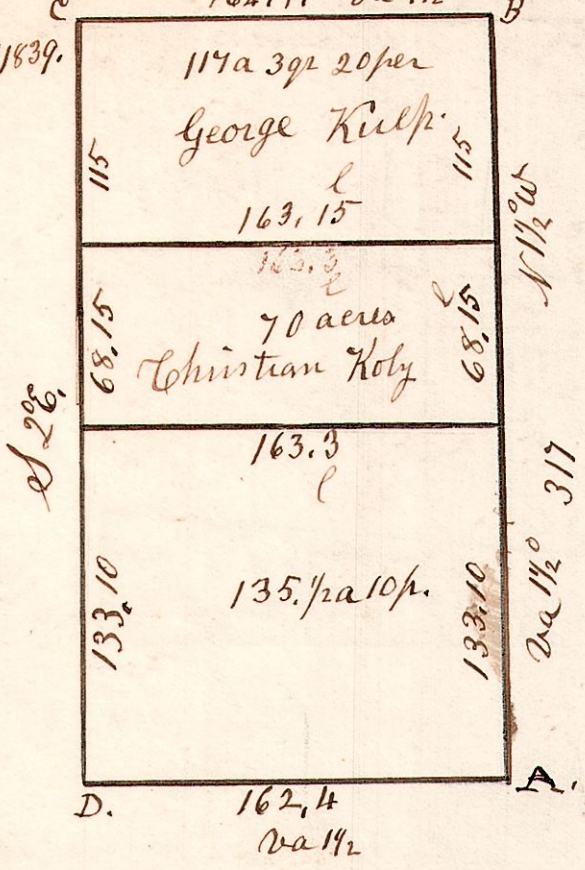


R. J. g.
11, 15, 31

W^{1/2} of Sec 31 in T15 R11.
164.11 va 112°

Feb 15 1839.

No 1.

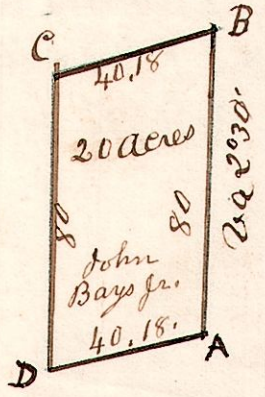


- A. W. oak 12 N 2 W 20.
 - " Dogwood 6. S 30 W 19.
 - B. Poplar 24. N 16 E 42.
 - " Chestnut 10. S 33 W 20.
 - C. Hickory 20. S 9 E. 20.
 - " Oak 48. N 61 E 41
 - D W oak 30 S 15 E 20.
 - " " 20 N 38 W 11.
- Stone at the other corners

Received of Jacob King 2 dollars
for surveying the 70 acre piece.

11. 14. 5.

No 2.



- A. W. oak. 18 N 47 W. 24
- " do. 15 N 1 E. 51
- D B oak 40. N 15 E. 33
- " W oak 10. N 70 W 45
- B. W oak 18. S 80 E 5
- " do 12. N 80 W 5
- C. W oak 24 S 23 E 8 1/2
- " do 18 North 13.

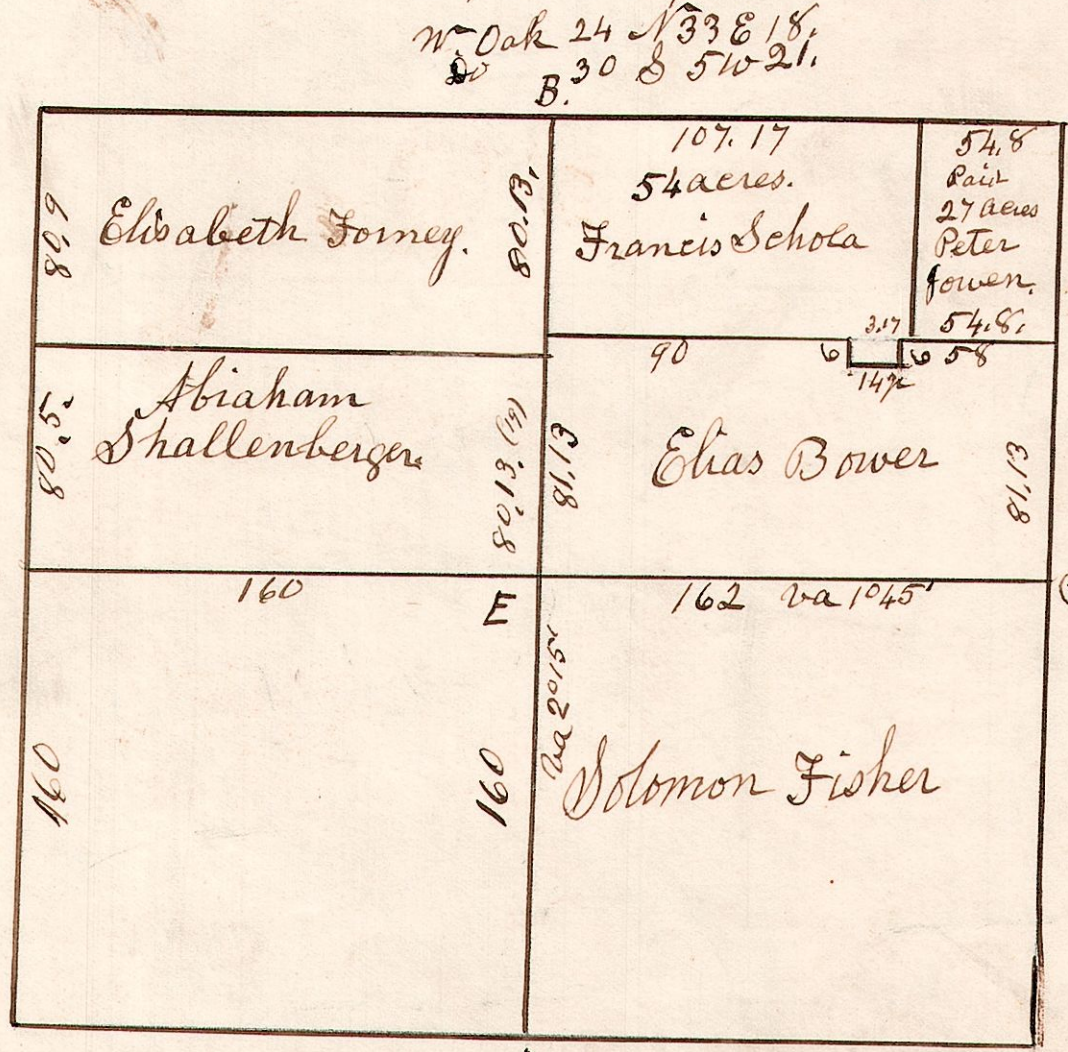
April 18 1829. Surveyed
20 acres for John Bays Jr
taken out of the S. E. corner
of the S W qr of Section
5 in T 14 R 11.

11. 15. 27.

No 3.

April 1st 1835 Surveyed Section 27 in T 15. of R 11 in the
following manner and for the following persons.

Maple 13. N 51 W 13.
Do. 12. S 51 E. 12.



W oak 24 N 33 E 18.
Do B. 30 S 51 W 21.

W oak 15 S 38 E 27.
R " 24. N 53 W 29.

W oak 42 N 82 E 42.
Do 15 S 60 W 38.

E. Lime Stone the corner,
4 by 16 inches.
Stones planted at all the inner corners.