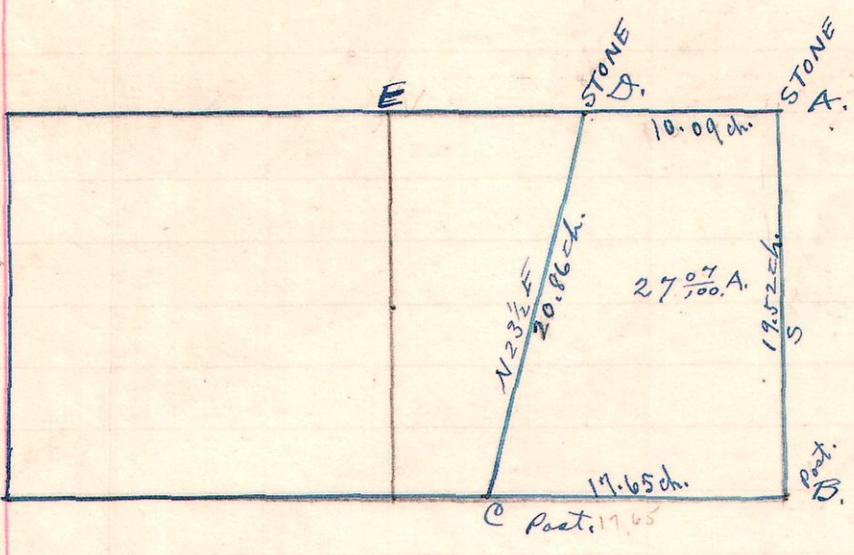


15 20 32 ^{NE PT.}
_{SE Qr.}

Survey made for Mrs. Normanda Culver to determine area of
A B C D and locate line C, D. Nov. 18, 1910.

Amos Kick chairman
D. P. Ebbert chairman

"E" is the center of Sec. 32, T. 20 R. 15.
"A" STONE 80 rods east of E.
"D" STONE 40 rods, 09 L west of A.



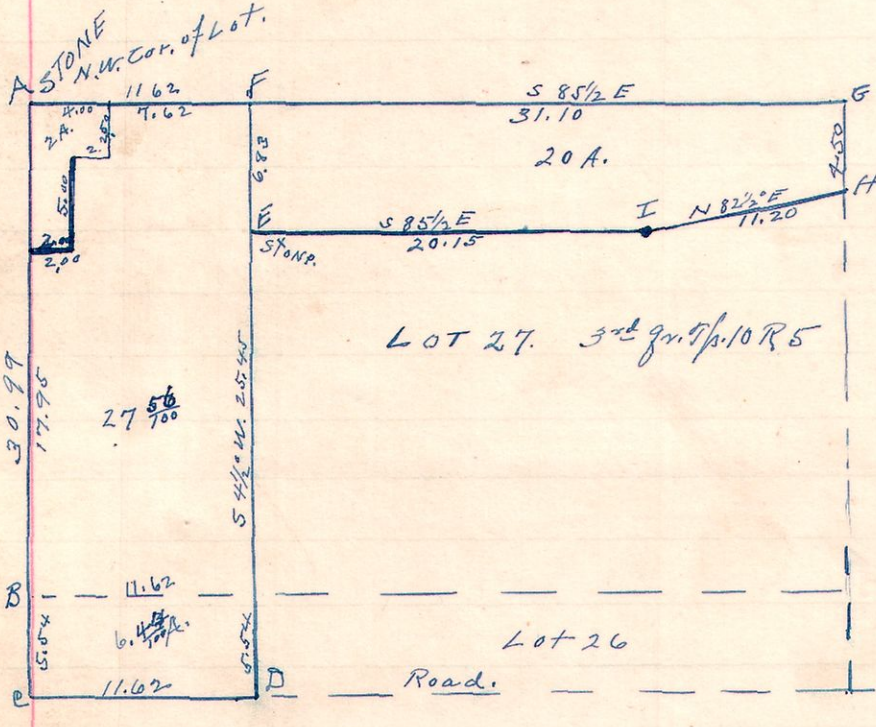
W. L. Reidenbach
Co. Surveyor

Amos Kick's Land.

5 10 Lots 27
20

Survey made for Eli Hochstetler & Josiah Arnold to cut of 20 A
off north of Lot 27, 3rd gr. T. 10. R. 5. and 34 A off west part
Lot 27 and 16. Dec. 21, 1910.

Chairman
E. A. Reidenbach
Charles Hermann
Presid. Eli Hochstetler
Josiah Arnold



"C" "D" is fence line south side of Road.
"F" Stone on North Line S 85 1/2 E 11.62 ch from A.
Post witness N. O. 36 N 62 W 23 links.
"G." Stone at N. E cor of Lot 27.
"H." Post. on East line S 4 1/2 W 4.50 of G.
wit. Sug. 9 N 10 W 3 links.
"I" Post. witness Hick 10 N 7 1/2 W 9 links
Bench 12 N 53 E 16 "

W. L. Reidenbach Co. Surveyor.

Range Line
20.30