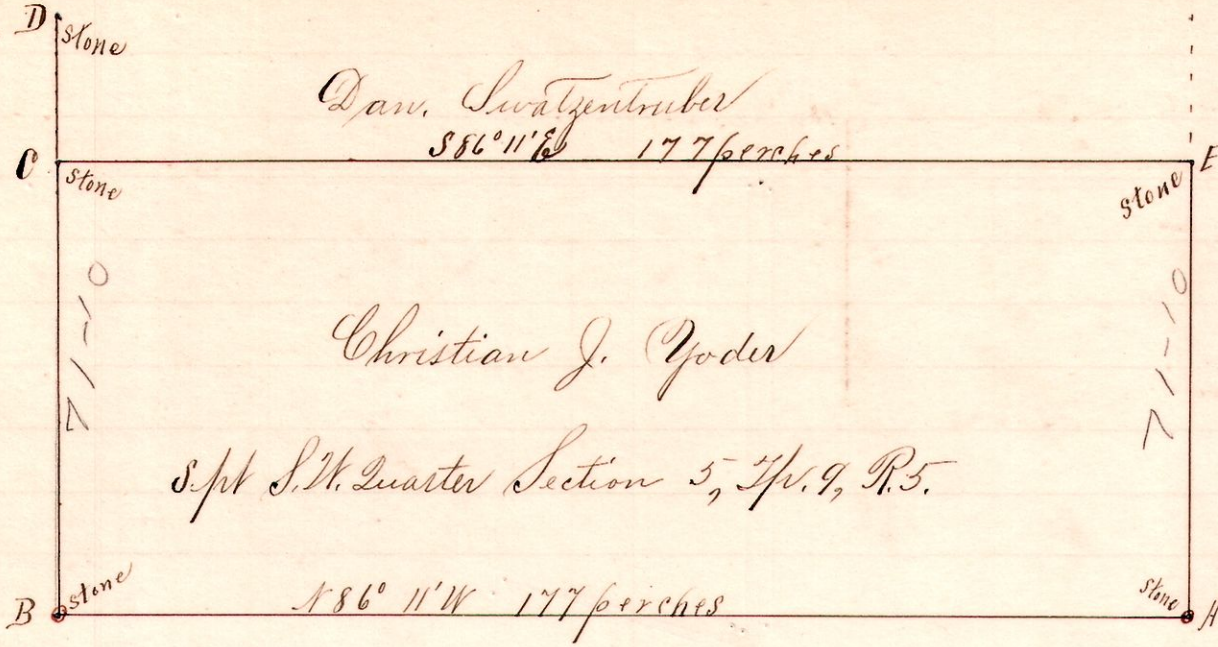


R 4 Sec 2
5 9 5 SW Spl

No. 63.



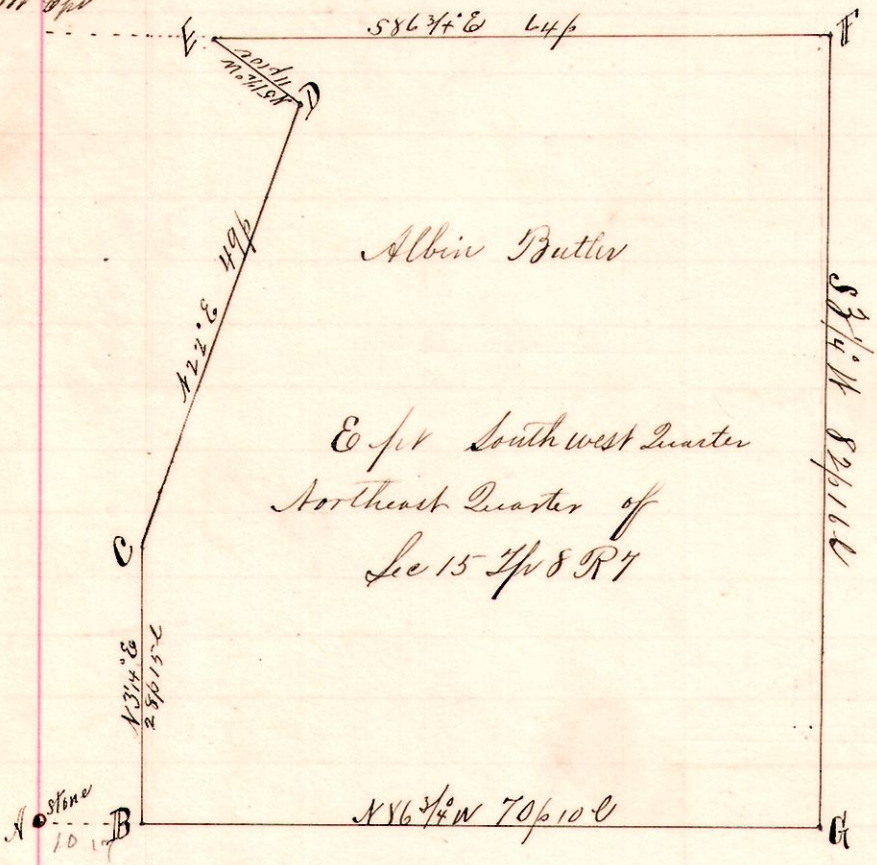
Notes
 "A," stone at the SE
 1/2 Sec, 5, T. 9, R. 5.
 "B," a stone at SW said
 section N 86° 11' W 177 p
 from A.
 "C," a stone on west
 line N 86° 11' W 177 p
 from B & 22 p 15 l to D,
 "E," a stone on E line said
 1/2 Sec 5, N 86° 11' W 177 p
 from E & S 32° 20' W 71 p 10 l to A.

Surveyed and established corners at C and E for Dan Swatzenuber and Christian J. Yoder et al April 13, 1894.

Frank H. Gunt,
 County Surveyor.

7 8 15 NE SW Spl

No. 64.



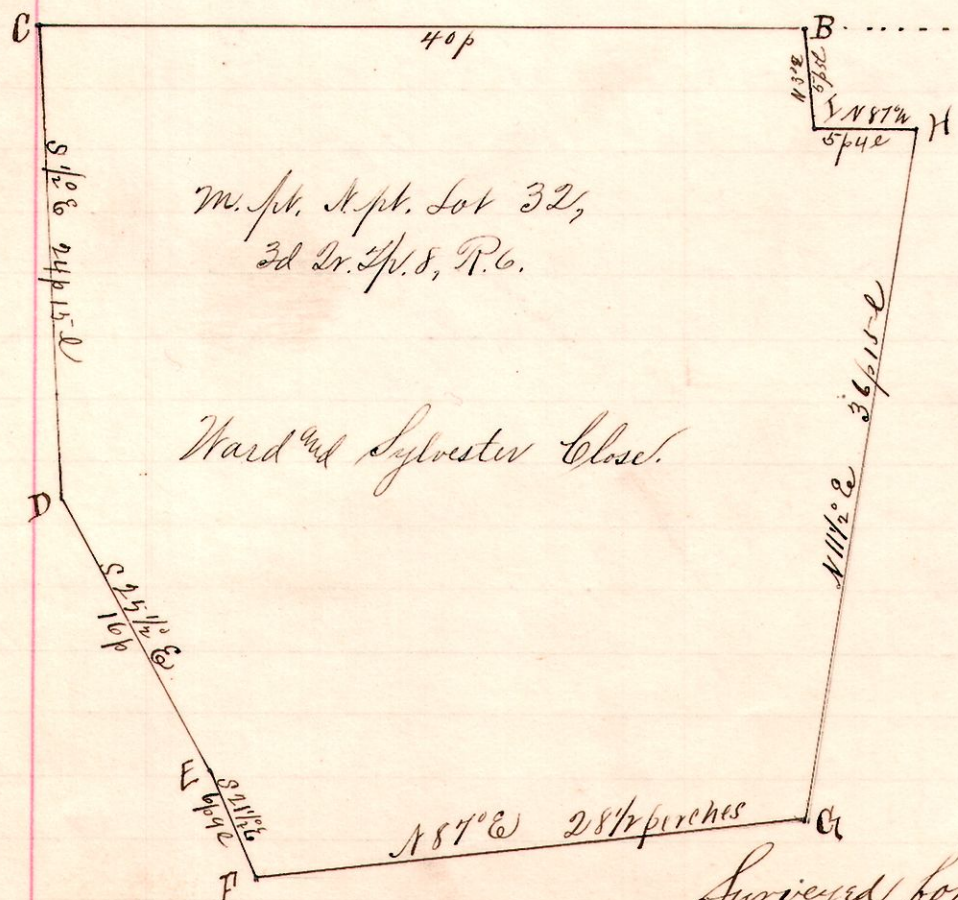
Notes.
 "A," stone at the southwest corner of
 the northeast quarter of Sec. 15, T. 8, R. 7.
 "B," a post on south line said quarter
 N 86° 3/4' E 10 p 17 l from A.
 "C," a post at side public road
 N 31° 1/4' E 28 p 15 l from B.
 "D," a post in said road N 22° E 49 p from C.
 "E," "at side" N 31° 1/4' W 11 p 10 l " D.
 "F," a post at the northeast corner of
 the southwest quarter of said NE 1/4
 N 86° 3/4' E 64 perches from E.
 "G," a post at SE said 1/4 Quarter
 S 31° 1/4' W 87 p 16 l from F & 70 p 10 l N 86° 3/4' W to B.

Surveyed for Albin Butler, Asa Chapman and others,
 April 20, 1894.

Frank H. Gunt,
 County Surveyor.

6 8 3 32 N

No. 65



Notes.
 "A," is a stone at NE lot 32, 2d Dr. T. 8, R. 6.
 "B," post on north line N 87 1/2° W 40 p from A.
 "C," " " " N 87 1/2° W 40 p " B.
 "D," " S 10° E 24 p 15 l from C
 "E," " S 25 1/2° E 16 p " D,
 "F," " S 21 1/2° E 6 p 9 l " E,
 "G," " N 87° E 28 1/2 p " F,
 "H," " N 11 1/2° E 36 p 15 l " G,
 "I," " N 87 1/4° W 5 p 4 l " H and
 N 3° E 5 p 5 l to B.

Surveyed for Ward S. Close and Frank Furwell.
 Frank H. Gunt, Co. Surveyor.

April 23, 1894