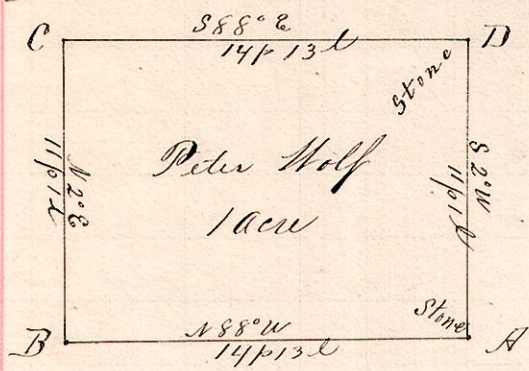


No. 513

R. J. S. Dr
12 14 11 NE. Q4



Chainmen:

John Row & Christ. Ridenbach

Surveyed the above for Peter Wolf and other heirs of Eliz. Wolf.
July 27, 1893.

Notes

"H," stone N 2° E 62 p 12 l from A stone at the southeast corner of the N pt of the northeast quarter of Trac. Sec. 11, Tp. 14, R. 12 (on Ind. Bound. line)

"B," a post N 88° W 14 p 13 l from A.

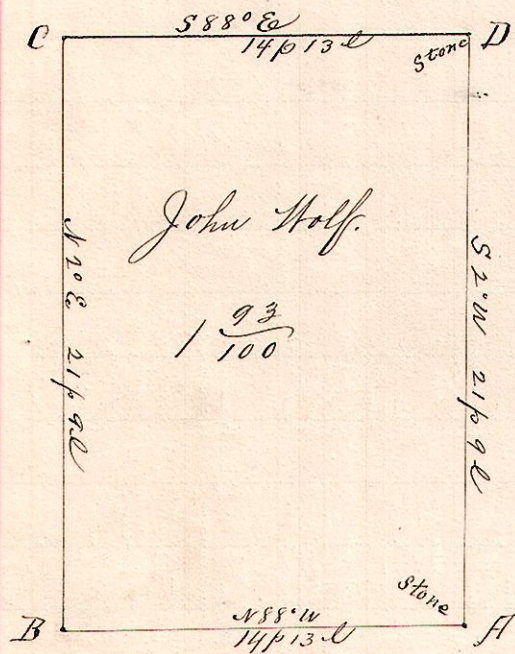
"C," a post N 2° E 11 p 1 l from B

"D," a stone in the public road on East line said N pt 588° E 14 p 13 l from C, & N 2° W 11 p 1 l from H.

Frank H. Guet,
County Surveyor.

No. 514.

Trac
12 14 11 NE. Q4



Surveyed for John Wolf and other heirs of Elizabeth Wolf, deceased.
July 27, 1893.

Notes.

"A," a stone in the public road N 2° E 41 p 3 l from a stone on the old Indian Boundary Line, at the southeast corner of the N pt of the northeast quarter of Trac. Sec. 11, Tp. 14, R. 12.

"B," a post N 88° W 14 p 13 l from A

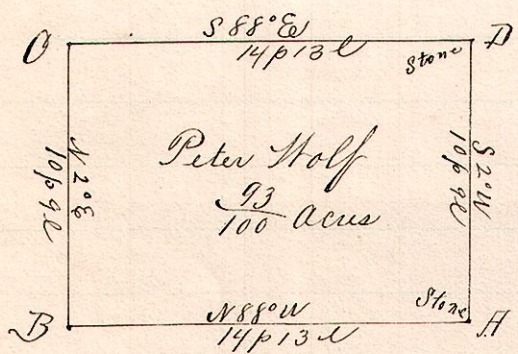
"C," " N 2° E 21 p 9 l " B.

"D," a post in the public road on east line said N pt NE. Dr Trac. Sec. 11, Tp. 14, R. 12. 588° E 14 p 13 l from C and N 2° E 21 p 9 l from A.

Frank H. Guet,
County Surveyor.

No. 515.

12 14 11 NE. Q4



Chainmen.

John Row & Christ. Ridenbach.

Marker, August Wolf.

Surveyed for Peter Wolf and other heirs of Elizabeth Wolf.
July 27, 1893.

Notes.

"H," stone in the public road N 2° E 30 p 19 l of a stone on old Indian Boundary Line at the southeast corner of the N pt of the NE. Dr of Trac. Section 11, Tp. 14, R. 12.

"B," a post N 88° W 14 p 13 l from A

"C," " N 2° E 10 p 9 l " B

"D," a post in the public road on east line said N pt 588° E 14 p 13 l from C, & N 2° E 10 p 9 l from H.

Frank H. Guet,
County Surveyor.