

No. 503.

R T S Dr
6 8 12 NW

Notes

"A" stone at the southeast corner of the northwest quarter of Section 12, T¹S, R. 6,

"B" a post on the south line of said quarter S 86 1/2° W 80 perches from A.

"C" a post S 3° 32' E 100 p from B.

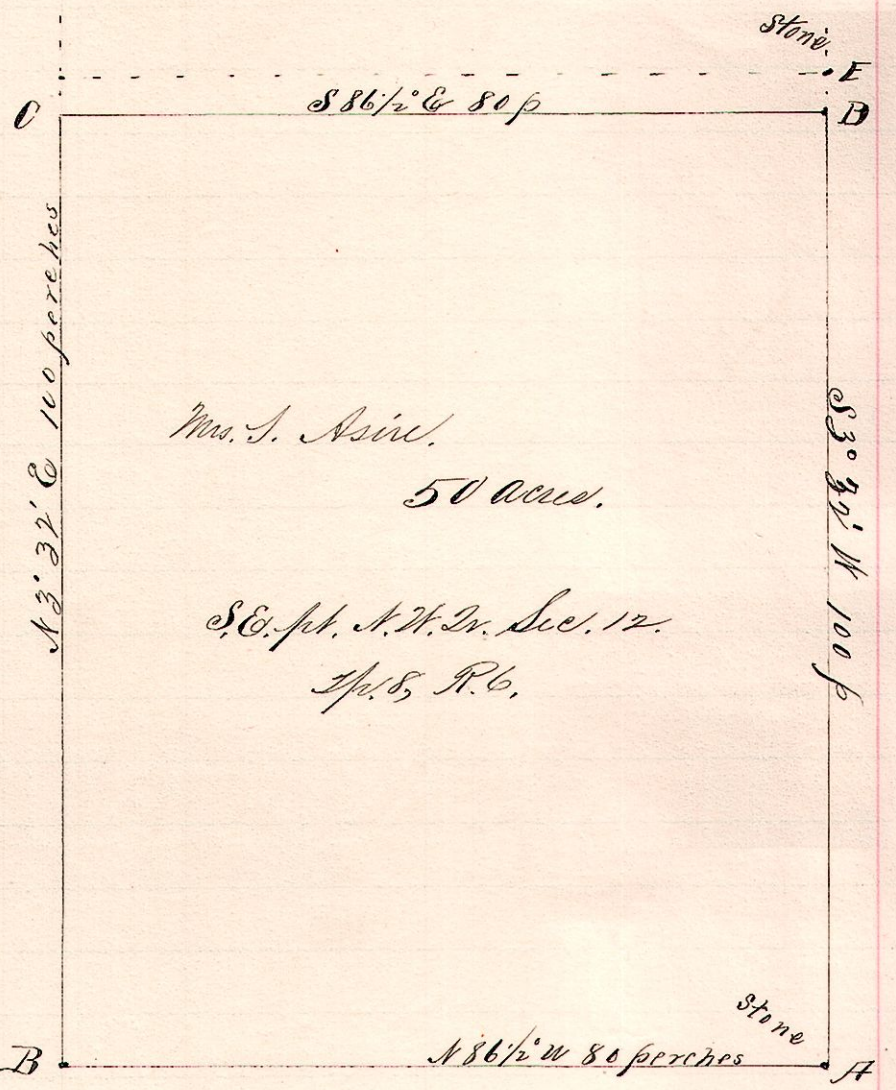
"D" a post on east line of said quarter S 86 1/2° E 80 p from C; also S 3° 32' W 61 p 15 l from F; a stone at the northeast corner of said quarter; also 1 p S 3° 32' W from E, and N 3° 32' E 100 p from A.

Chainmen:

Jefferson Varnes }
Thomas Mullet } sworn.

Josiah H. Couble

30 acres



Surveyed for Hezekiah Logsdon and Mrs. Samuel Asire,
April 28, 1893.

Frank H. Gault
Co Surveyor

No. 504.

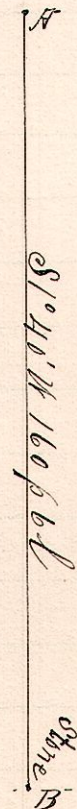
13 13 10 SE
71 SW

Holmes County

Infirmary Farm.

S.E. Dr. Sec. 10 T¹S R. 7

S.W. Dr. Sec. 11, T¹S, R. 7.



Surveyed the line A.B. between sections 10 and 11, T¹S, R. 7.
April 21, 1893.

Frank H. Gault,
County Surveyor.