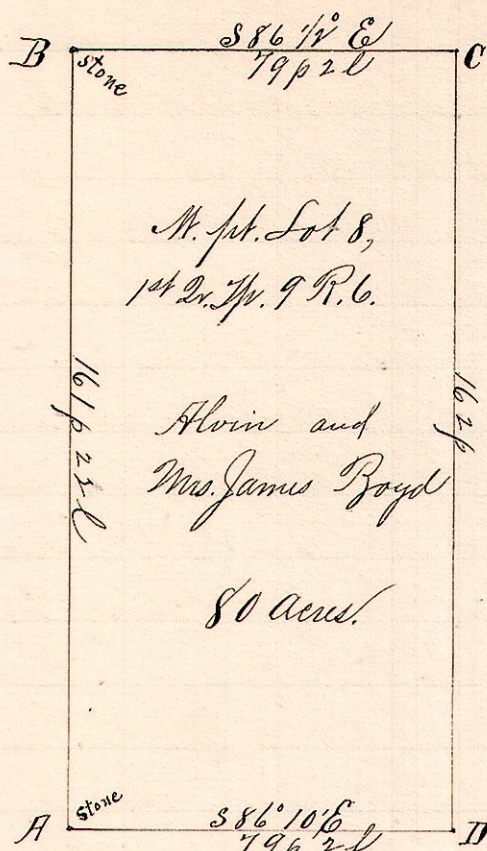


No. 497.

R 2d Dr. Tp. 9 R. 6  
6 9 1st 8 Npt



April 13, 1893.

Notes  
 "H" stone at the southwest corner of Lot 8, 1st Dr. Tp. of Tp. 9 R. 6  
 "B," a stone at northwest corner of said Lot.  
 "C," a post on north line S 86 1/2° E 79 p 2 l from B  
 "D," a post on south line S 86° 10' E 79 p 2 l from A and 162 p south of C.

Chairmen (sworn)

F. G. Anderson  
 Henry Lisy

Members

D. S. Boyd

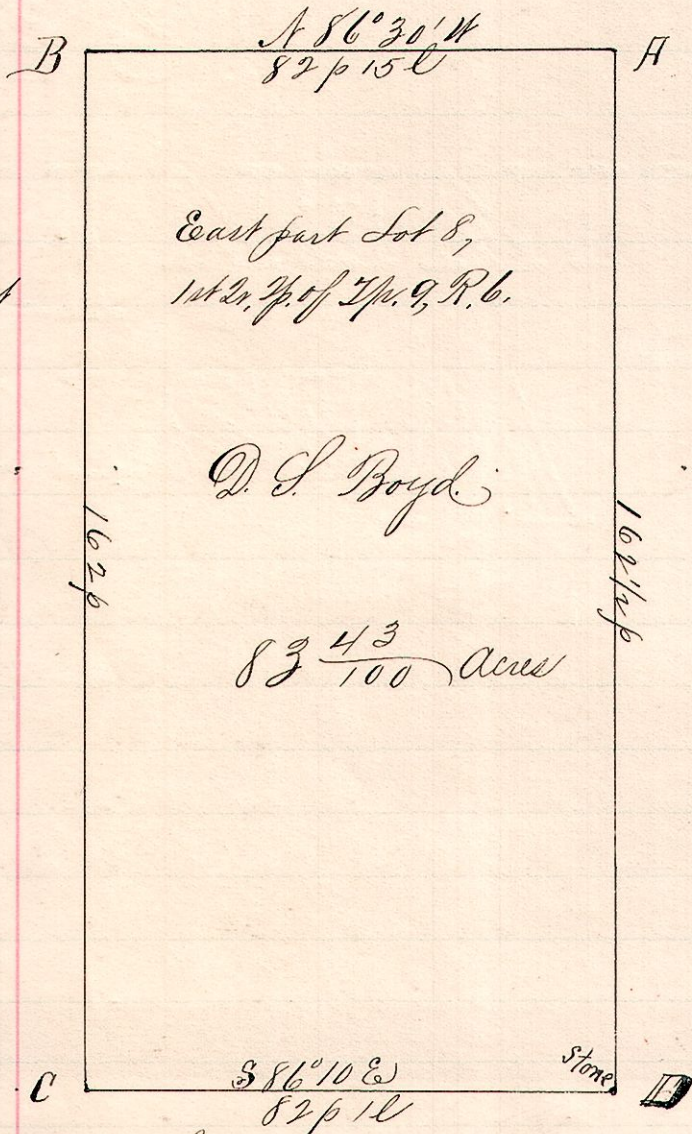
Humphrey Boyd

Surveyed for Alvin and Mrs. James Boyd,

Frank H. Genet  
 County Surveyor.

No. 498.

6 9 1st 8 Ept



Surveyed April 13, 1893.

Notes  
 "H," the northeast corner of Lot 8 1st Dr. Tp. of Tp. 9 R. 6 (Berlin).  
 "B," a post on north line of said Lot N 86 1/2° W 82 p 15 l from A, and 79 p 2 l east of a stone at NW corner.  
 "D," a stone at southeast corner said Lot.  
 "C," a post on south line, S 86° 10' E 79 p 2 l from a stone at the southwest corner of said Lot and 82 p 10 west of the southeast corner.

Chairmen (sworn)

Henry Lisy and  
 F. G. Anderson.

Other Assistants.

D. S. Boyd

Humphrey Boyd

Partition of land of James Boyd.

Frank H. Genet,  
 County Surveyor,  
 Holmes Co., O.