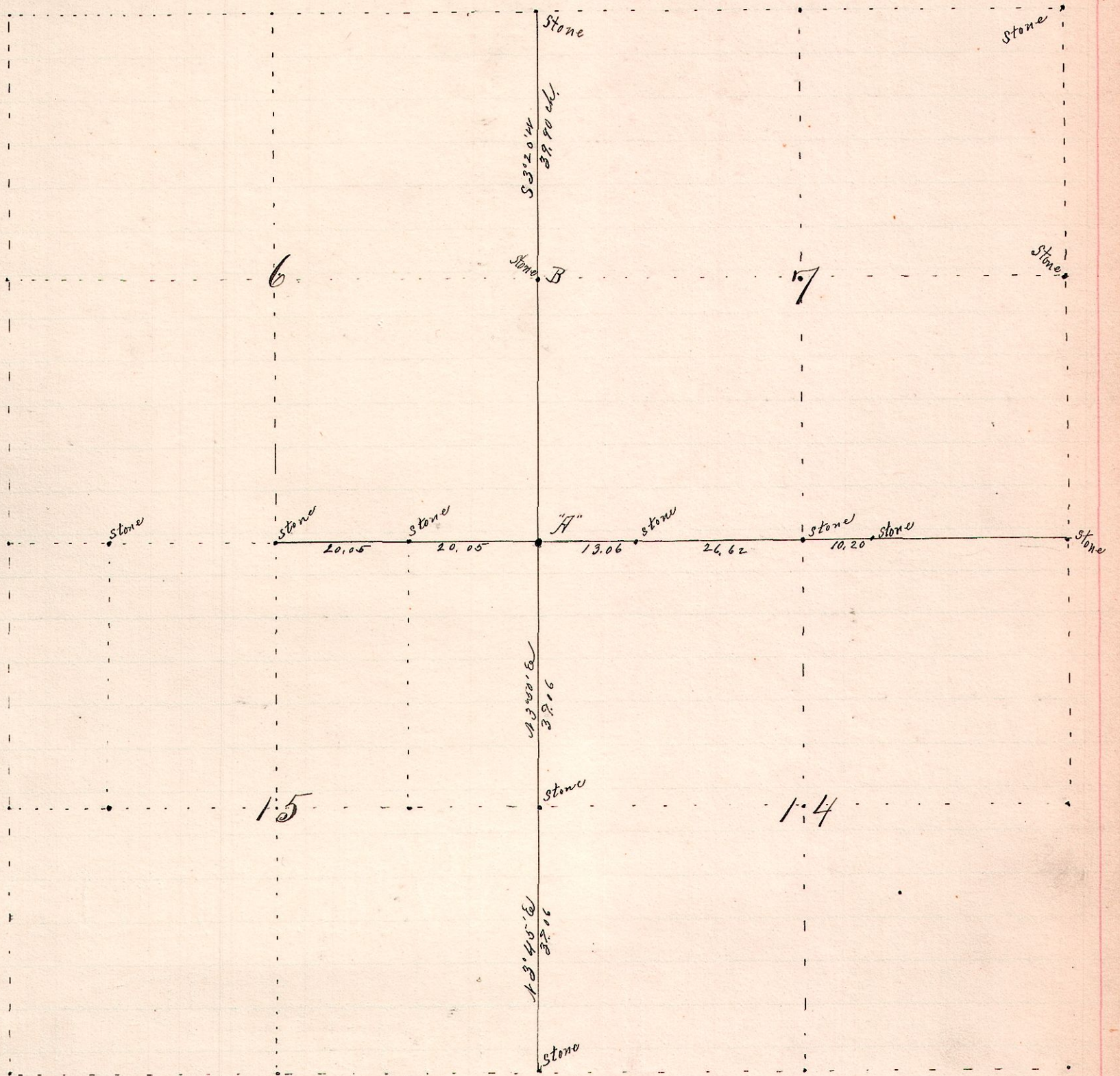


No 477.

R. Tp. Sections
4 8 6, 7, 14, and 15.



Established a stone corner at "A" for Sections 6, 7, 14 and 15 of Twp. 8 R 4, putting glass and pottery under the same and stone broken and placed around it. Measurement of ^{stone} about 3ft 5 inches long and 8 inches in diameter; The ground being low and marshy, there were no traces of the original corner and witnesses. Took as new witness a swamp oak 16 inches in diameter S 77 1/4° E 16 3/4 links.

Surveyed the above for, Geo. M. Domes, Dan. J. Domes, Isaac Troyer, Seth Troyer, and others March 15, 16, 17, 18 92.

Franklin G. Guel
County Surveyor,
Holmes Co., O.