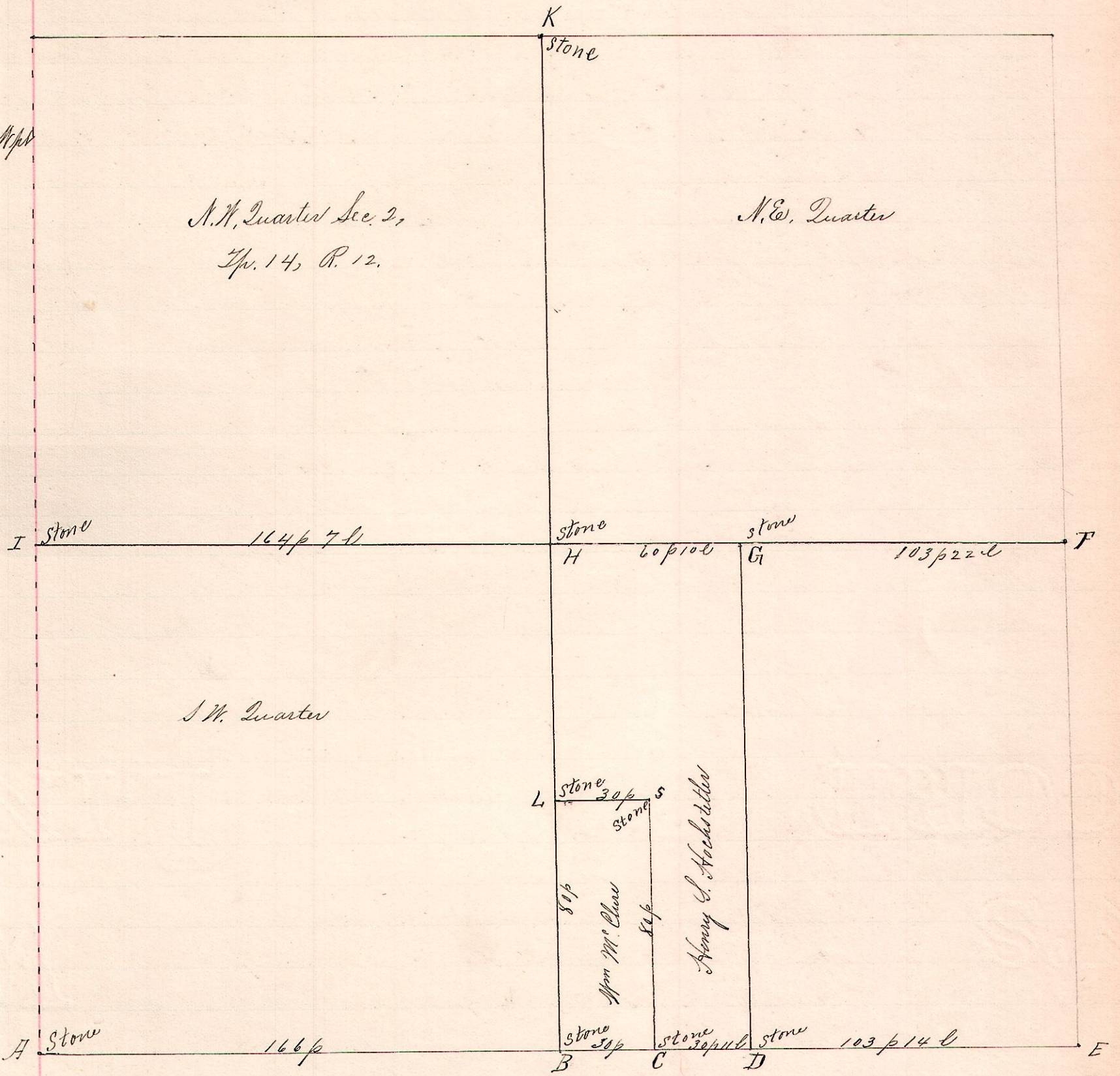


No. 462.

R Tp Sec 2,
12 14 2 SE 1/4

N.W. Quarter Sec. 2,
Tp. 14, R. 12.

N.E. Quarter



S.W. Quarter

I certify that the foregoing notice
and plat are correct, as surveyed for Henry S. Hochstetler,
William M. Chew, ^{et al} by legal notice notice on each land owner.
Dec 20th and 21, 1892.

Frank H. Genet,
County Surveyor,
Holmes Co., O.

Genet