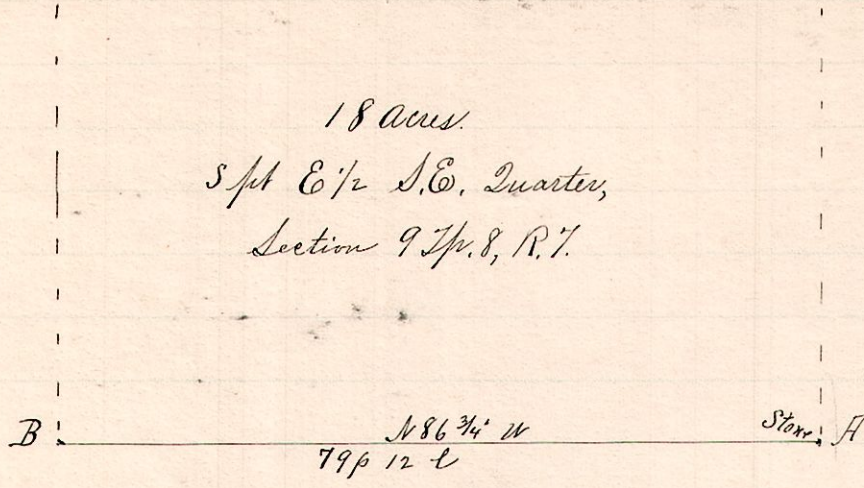


No. 451.

R 7th Sec 9
7 8 9 SE SE



Nov 25 1892.

Surveyed the above for H. M. Shepler, et al.

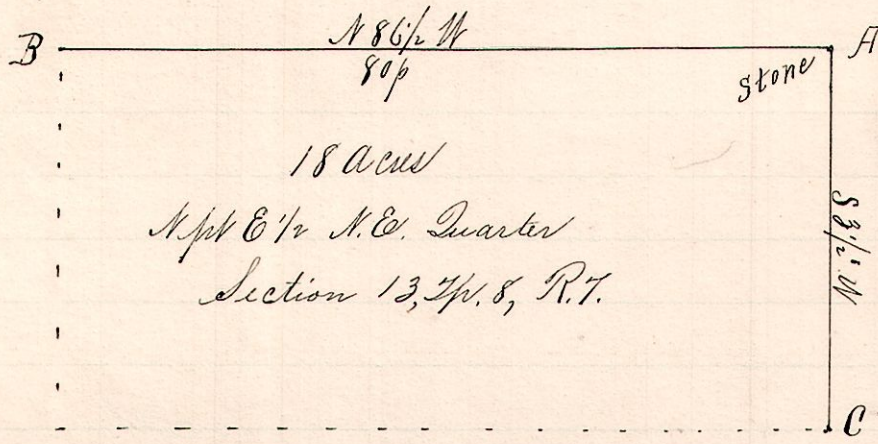
Note.
"A", a stone at SE corner Sec 9, Twp 8 R 7
"B", a post on south said S.E. Qr
at half Dr post N 86 3/4 W 79 1/2 p from A.

- Chairman -
H. M. Shepler
E. C. Shepler.
Thomas Dornow marker

Frank H. Genet,
County Surveyor.

No. 452

7 8 13 NE NE



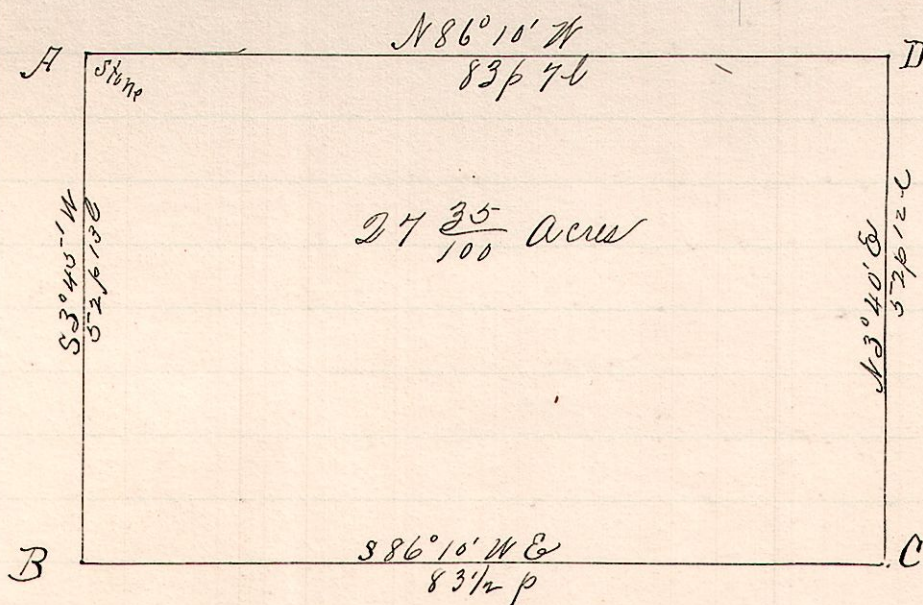
Surveyed the above for H. M and Edward C. Shepler.
Nov. 25, 1892.

Note
"A" stone at northeast corner
E 1/2 N.E. Quarter Sec. 13, Twp. 8, R. 7.
"B", the half Quarter post on north
line said Quarter is N 86 1/2 W
80 p from A.
"C", the southeast corner is a
post on east line S 3 1/2 W from A.

Frank H. Genet,
County Surveyor.

No. 453.

R 7th 14th Lot
7 9 3 & 2 NW



Surveyed the above for Cyrus Uhl and David
Bilderback, Administrators estate George W. Uhl, deceased,
Nov. 23, 1892.

Note
A, stone at NW Lot 2, 2nd 2nd Twp 9 R 7.
"B", a post on A line S 3° 45' W 52 1/2 p
C, a post S 86° 10' E 83 1/2 p from B.
"D", a post on A line N 3° 40' E
52 1/2 p from C and S 86° 10' E
83 p 7 l from A.
- Chairman -
C. F. Bickle, David Bilderback
marker, - Ed. Uhl.

Frank H. Genet,
County Surveyor.